



Connells

Byron Road
Exeter

Byron Road
Exeter EX2 5QN

for sale guide price
£375,000



Property Description

GUIDE PRICE £375,000-£400,000. *This beautifully modernised three-bedroom detached house on Byron Road offers stylish, high-quality living throughout. The interior has been upgraded to an impressive standard, creating bright and contemporary spaces ideal for families or professionals. The newly landscaped rear garden includes a patio, BBQ area and enclosed fencing, providing a private setting for relaxing or entertaining. Outside, the home benefits from a private driveway, car port and single garage, offering excellent parking and storage options. Situated in a sought-after Exeter location, this move-in-ready property combines modern comfort with practical everyday convenience.*

Entrance Porch

Internal door to entrance hall. Double glazed windows to front.

Entrance Hall

Stairs to first floor. Arch opening into kitchen. Sliding door to Lounge.

Kitchen

Wall and base units, work surfaces. Integrated oven and hob with extractor over. Integrated Fridge freezer, washing machine. Double sink with stainless steel mixer tap. Double glazed window to front aspect. Side door into car port.

Lounge

Double glazed window to rear aspect. Double glazed sliding door to garden. Under stairs cupboard. Two wall mounted radiators.

Landing

Storage cupboard over stairs. Loft Access. Doors to all bedrooms and bathroom.

Bedroom 1

Double glazed front aspect window. Freestanding double wardrobes with central dressing unit. Distant views across Exeter. Radiator.

Bedroom 2

Double glazed rear aspect window. Large wardrobe. Radiator

Bedroom 3

Good size study/single bedroom. Double glazed rear aspect window. Radiator.

Shower Room

Walk in mains fitted rainfall shower. Wash hand basin. Low level toilet. Heated towel rail. Obscured front aspect double glazed window.

Outside

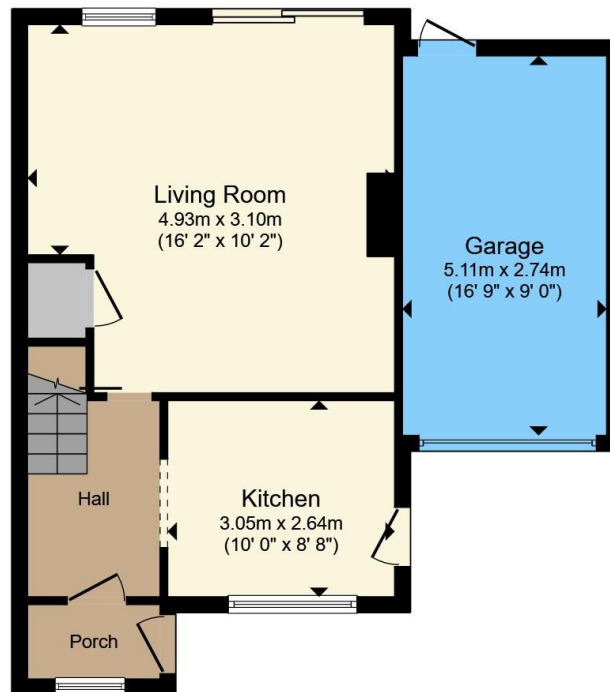
Front: Off road parking on driveway. Car port leading to single garage.

Rear Garden: Large patio area from rear doors, with step up to lawn area. Small patio area in corner of garden. Flower bed to side border. Fenced surround. Large Summerhouse/Shed.

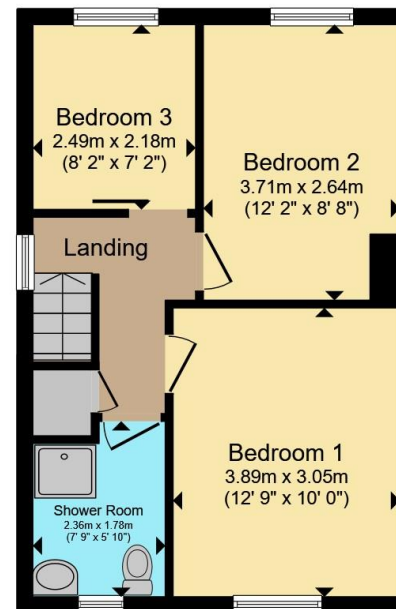








Ground Floor



First Floor

Total floor area 92.3 m² (994 sq.ft.) approx

This floor plan is for illustrative purposes only. It is not drawn to scale. Any measurements, floor areas (including any total floor area), openings and orientation are approximate. No details are guaranteed, they cannot be relied upon for any purpose and they do not form part of any agreement. No liability is taken for any error, omission or misstatement. A party must rely upon its own inspection(s). Powered by www.propertybox.io

Connells

To view this property please contact Connells on

T 01392 221 331
E exeter@connells.co.uk

8-9 South Street
 EXETER EX1 1DZ

EPC Rating: D Council Tax
 Band: D

Tenure: Freehold

view this property online connells.co.uk/Property/EXR317305



1. MONEY LAUNDERING REGULATIONS Intending purchasers will be asked to produce identification documentation at a later stage and we would ask for your co-operation in order that there will be no delay in agreeing the sale. 2. These particulars do not constitute part or all of an offer or contract. 3. The measurements indicated are supplied for guidance only and as such must be considered incorrect. Potential buyers are advised to recheck measurements before committing to any expense. 4. We have not tested any apparatus, equipment, fixtures, fittings or services and it is in the buyers interest to check the working condition of any appliances.

Connells Residential is registered in England and Wales under company number 1489613, Registered Office is Cumbria House, 16-20 Hockliffe Street, Leighton Buzzard, Bedfordshire, LU7 1GN. VAT Registration Number is 500 2481 05.

See all our properties at www.connells.co.uk | www.rightmove.co.uk | www.zoopla.co.uk

Property Ref: EXR317305 - 0002