



King Charles Road, KT5

£435,000

A bright and spacious first floor apartment located on King Charles Road. This period conversion is larger than average and has impressively high ceilings.

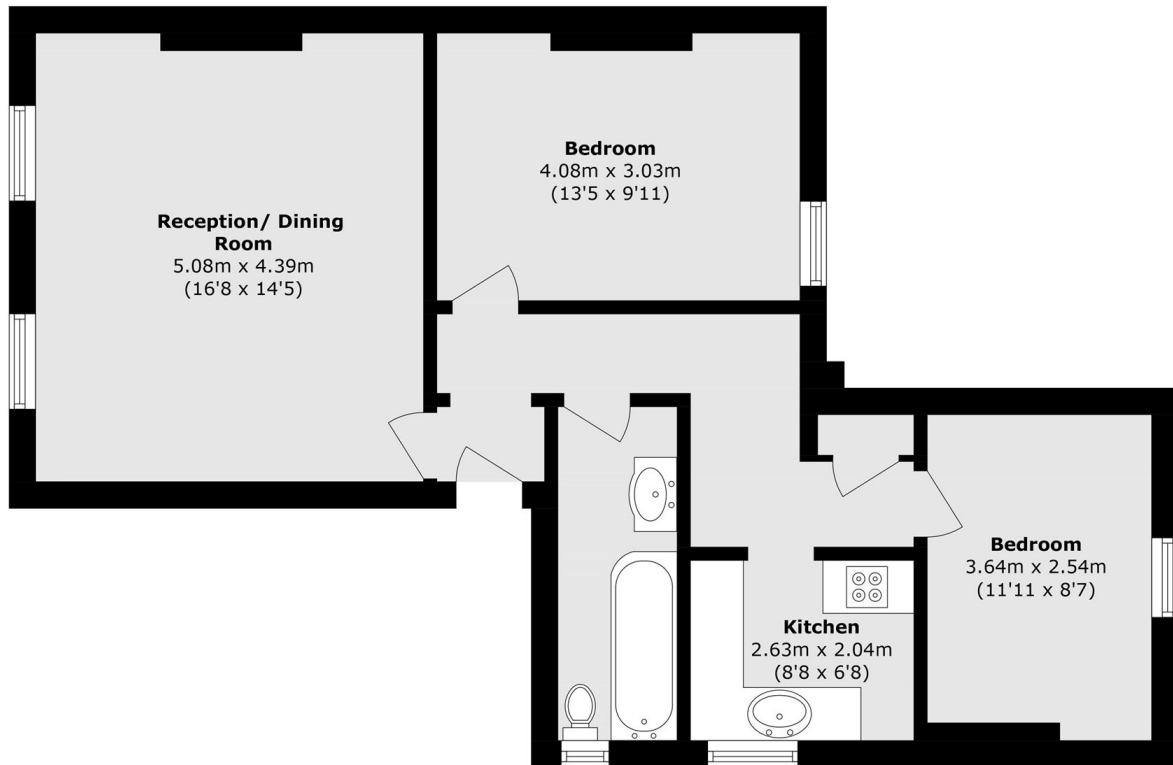
Accommodation includes two double bedrooms, a well proportioned kitchen, large reception room and a bathroom. Further benefits include off street parking, a new lease upon completion and no onward chain.

King Charles Road is centrally located with a vast selection of bars, restaurants and local shops on the doorstep. Surbiton train station is conveniently less than half a mile away and has a quick service in to London Waterloo in 15 minutes.

Features

- Period Conversion
- Two Double Bedrooms
- Allocated Parking
- No Onward Chain
- First Floor
- New Lease Upon Completion

King Charles Road, Surbiton, KT5



Total area (approx.): 66.7 sq. m (718.0 sq. ft)