



# Greyfriars House, Queen Street, Lichfield, WS13 6QD - City Centre Location & No Upward Chain

Shared Ownership £46,250

🛏 2 🚿 1 🚗 1



This well-presented two-bedroom apartment, situated in the heart of Lichfield city centre, offers an exceptional opportunity for those seeking comfortable and convenient living with no upward chain. Greyfriars House provides an enviable address, placing you within easy reach of all the city's amenities. Coming to the market at 25% shared ownership or potential to purchase 100% ownership at £185,000.

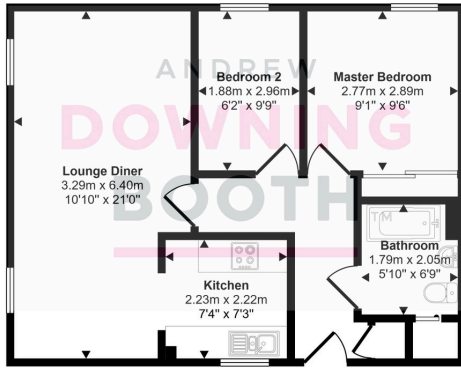
The apartment is set across one floor and comprises a welcoming entrance hall, a spacious and contemporary-style kitchen/living/dining area, two well-proportioned bedrooms, and a family bathroom. The property further benefits from an allocated parking space.

Situated in the heart of Lichfield city centre, this property enjoys a highly convenient location within walking distance of an excellent range of shops, cafés, restaurants, and local amenities. The property is ideally placed for commuters, with Lichfield City railway station and Lichfield Trent Valley railway station both offering direct links to Birmingham and beyond. The nearby A38 provides easy access to surrounding towns and motorway networks, while the beautiful Beacon Park and the historic Lichfield Cathedral are just a short distance away. This home is perfect for those looking to embrace a city lifestyle with all the conveniences at their doorstep.

An internal inspection is highly recommended to fully appreciate the space and prime location this apartment offers.



Approx Gross Internal Area  
53 sq m / 567 sq ft



Floorplan

This floorplan is only for illustrative purposes and is not to scale. Measurements of rooms, doors, windows, and any items are approximate and no responsibility is taken for any error, omission or mis-statement. Icons of items such as bathroom suites are representations only and may not look like the real items. Made with Made Snappy 360.

- Two Bedroom Ground Floor Apartment
- City Centre Location
- Well-Presented Throughout
- Allocated Parking Space
- EPC Rating:
- 25% Shared Ownership
- No Upward Chain
- Open Plan Kitchen, Living Diner
- Potential To Purchase 100% Ownership
- Council Tax Band: B

