



2 Principal Place, Worship Street

, LONDON EC2A 2FE

- 24-hour concierge service
- Luxury spa and sauna facilities
 - Private cinema room
- Secure entry system and lift access
 - EPC-B
- Edgeless infinity swimming pool
- State-of-the-art gym overlooking the piazza
 - Residents' lounge
- Close to Liverpool Street Station
 - CTB-E

£3,700 PCM

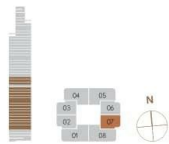


Local Authority **Hackney**
 Council Tax Band **E**
 EPC Rating **B**

APARTMENT 07

1 BEDROOM
 FLOORS 04-19, 21-23

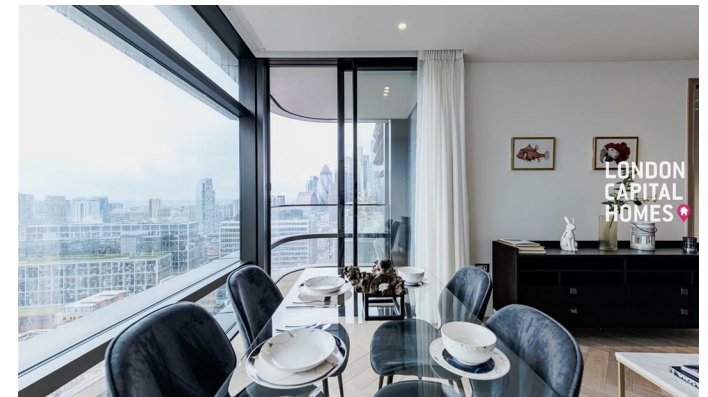
| | | | |
|-----------|---|---------------|------------------------------|
| APARTMENT | 50.3m ² / 541ft ² | Living/dining | 5.69 x 3.33m / 18'8" x 10'9" |
| TERRACE | 3.8m ² / 40ft ² | Kitchen | 3.11 x 3.33m / 10'2" x 10'9" |
| | | Bedroom | 3.85 x 2.85m / 12'6" x 9'5" |
| | | En-suite | 2.07 x 2.20m / 6'10" x 7'3" |
| | | Terrace | 3.12 x 1.87m / 10'1" x 6'0" |



KEY

| | | | |
|-----|----------------------|----|----------------|
| HU | Heated Vertical Unit | AV | Audio Visual |
| CHW | Chilled Water | WD | Washer Dryer |
| MWB | Master and Servant | WC | Wet Room |
| | and not necessary | ED | Electric Dryer |
| | | ED | Electric Dryer |

Scale 1:72 = 1m/39.3"



London Office Office
 Spaces Victoria, 25 Wilton Road, Pimlico,
 London, SW1V 1LW

Contact
 020 3084 3094
 XL@londonvictoriagroups.co.uk
 www.londonvictoriagroups.co.uk

Agents Note: Whilst every care has been taken to prepare these particulars, they are for guidance purposes only. All measurements are approximate and for general guidance purposes only and whilst every care has been taken to ensure accuracy, they should not be relied upon and potential buyers/tenants are advised to recheck the measurements.