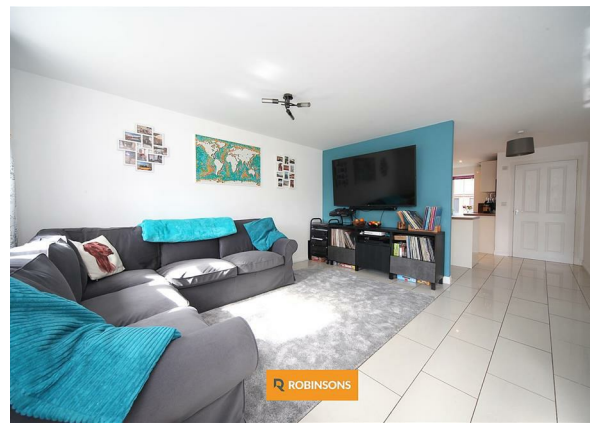
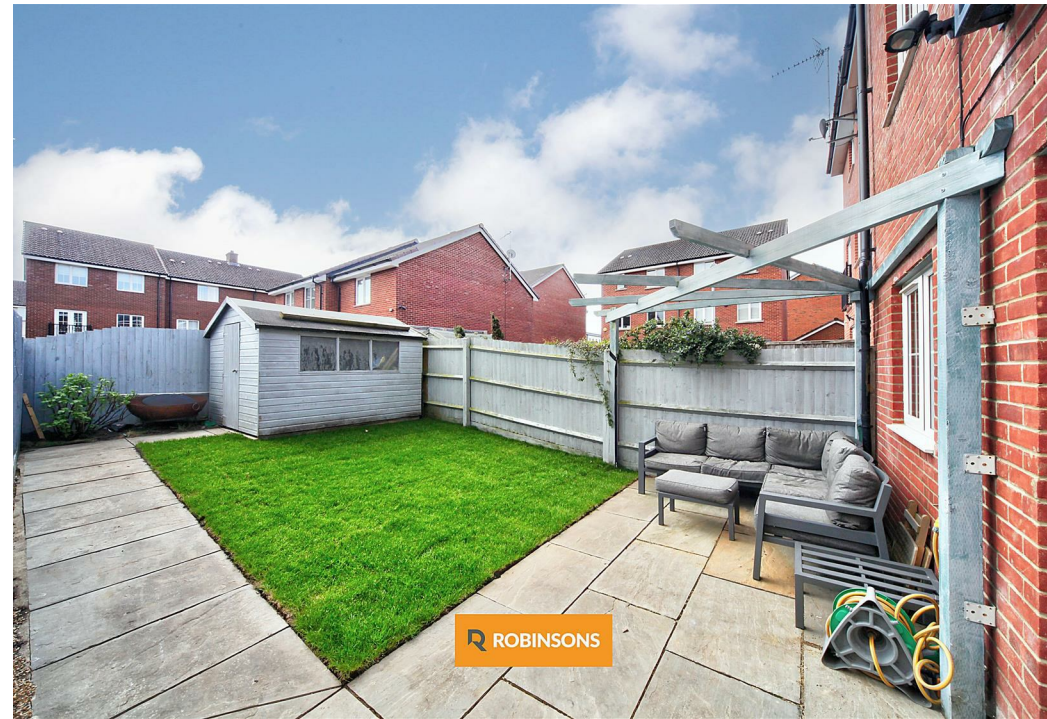
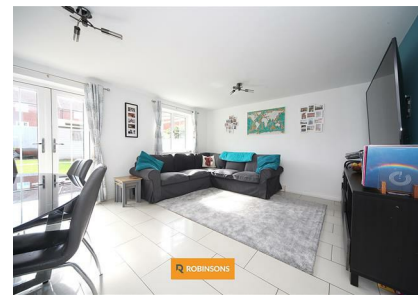


14 Goodhart Crescent, Dunstable, LU6 3FL
Asking Price £450,000

ROBINSONS



A GENEROUSLY SIZED FOUR BEDROOM FAMILY HOME ARRANGED OVER THREE FLOORS, SITUATED IN A WELL REGARDED AND HIGHLY CONVENIENT PART OF DUNSTABLE, IDEALLY PLACED FOR EASY ACCESS TO LOCAL SCHOOLS, SHOPS, AND TRANSPORT LINKS INCLUDING THE A5 AND M1,

This impressive home on Goodhart Crescent is arranged across three floors and offers a fantastic layout throughout. The ground floor features a large living room measuring over 28ft in length, providing an excellent space for both relaxing and entertaining. To the rear, there is a well sized kitchen with ample storage and worktop space, along with a convenient ground floor W C.

On the first floor, you will find two well proportioned bedrooms, including a particularly spacious principal bedroom, as well as a modern family bathroom. The second floor continues to impress with two further bedrooms, one benefitting from an en suite, alongside an additional shower room, making it perfect for larger families or guests.

The total floor area of approximately 126.7 square metres highlights the generous proportions throughout, with each room thoughtfully laid out to maximise space and practicality.



Total Area: 126.7 m² ... 1364 ft²

Floorplan produced by Woodside Photography
 Floorplan is for illustration purposes only and all measurements are approximate



20 West Street
 Dunstable
 Bedfordshire
 LU6 1SX
 01582 661112
sales@robinsons-estates.co.uk
<https://www.robinsons-estates.co.uk>

