



213 Lynhurst Crescent, Uxbridge - UB10 9EJ  
£375,000

 **LAWRENCE RAND**



## 213 Lynhurst Crescent

Uxbridge, Uxbridge

- Two Double Bedrooms
- Ground Floor
- Driveway
- Large Garden
- Good condition throughout

This bright and spacious two-bedroom ground floor maisonette is ideally situated on Lynhurst Crescent in the heart of Hillingdon. Offering well-proportioned living throughout, the property is perfect for those seeking comfort, convenience, and a welcoming home environment with off street parking and large rear garden

The property comprises a generous reception room filled with natural light, creating an inviting space for both relaxing and entertaining. The separate kitchen is well laid out, providing ample storage and workspace. Two good-sized bedrooms offer flexibility for families, professionals, or those needing a home office, while the bathroom is neatly presented and functional.

One of the standout features of this property is its private garden, offering a peaceful outdoor retreat—ideal for enjoying warmer months, gardening, or hosting guests.

Located in a desirable residential area, the maisonette benefits from easy access to local amenities, transport links, and green spaces, making it a fantastic opportunity for a range of buyers or tenants.

Presented with care by Lawrence Rand – helping you find the place you'll love to call home.





## 213 Lynhurst Crescent

Uxbridge, Uxbridge

Nearest Station Hillingdon Station – approx 0.8  
Ickenham Station – approx 1.2 Uxbridge Station –  
~approx 1.7

Nearest Station Hillingdon Station – approx 0.8  
Ickenham Station – approx 1.2 Uxbridge Station –  
~approx 1.7

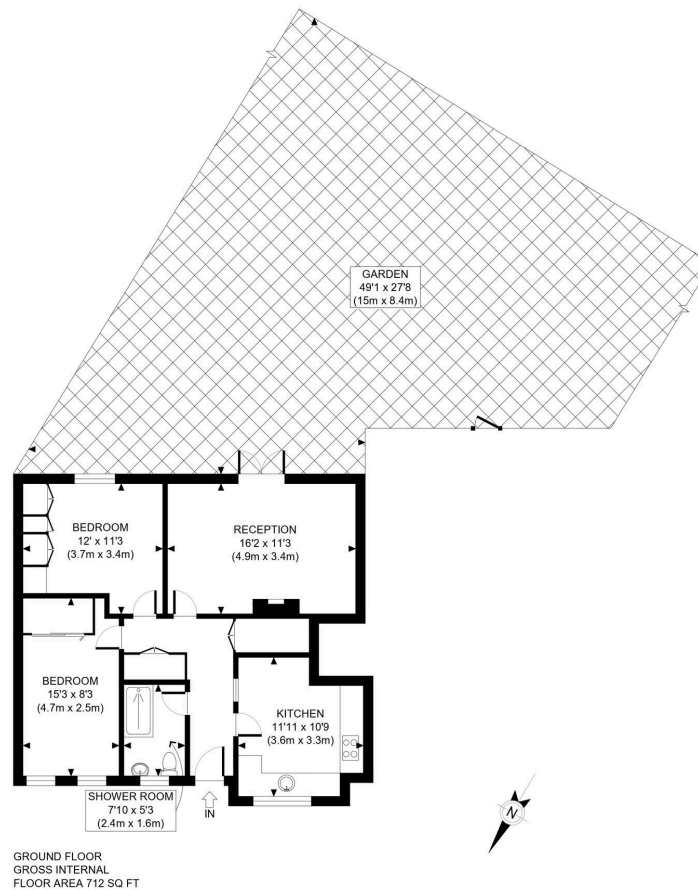
Council Tax band: C

Tenure: Leasehold

EPC Energy Efficiency Rating:

EPC Environmental Impact Rating:





APPROX. GROSS INTERNAL FLOOR AREA: 712 SQ FT/ 66 SQM



This plan is for illustrative purposes only and should be used as such by any prospective client. Whilst every attempt has been made to ensure the accuracy of the Floor Plan contained here, measurements of the doors, windows, rooms and any other items are approximate and no responsibility is taken for any errors, omissions, or misstatement. The services, systems and appliances shown have not been tested and no guarantee as to the operability or efficiency can be given.

PROPERTY PHOTO PLANS

**Lawrence Rand**  
51 Victoria Road, Ruislip - HA4 9BH  
01895 632211  
Info@lawrence-rand.co.uk  
www.lawrence-rand.co.uk/

Lawrence Rand Limited has made every reasonable effort to ensure the accuracy of the information provided. However, we accept no responsibility for errors, omissions, or misstatements. All measurements, distances, and descriptions are approximate and for guidance only. Prospective purchasers or tenants must verify all details independently. Some images may include AI-generated virtual staging to illustrate the potential of the property and are for visual guidance only. No warranty is given or implied, and these particulars do not form part of any offer or contract. Lawrence Rand reserves the right to amend or withdraw any property without notice.