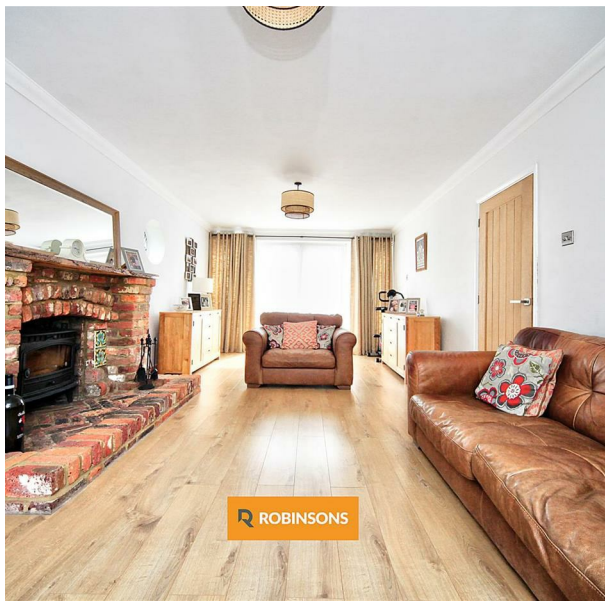
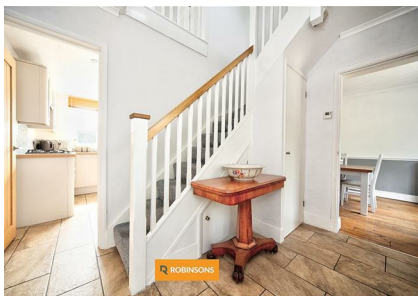
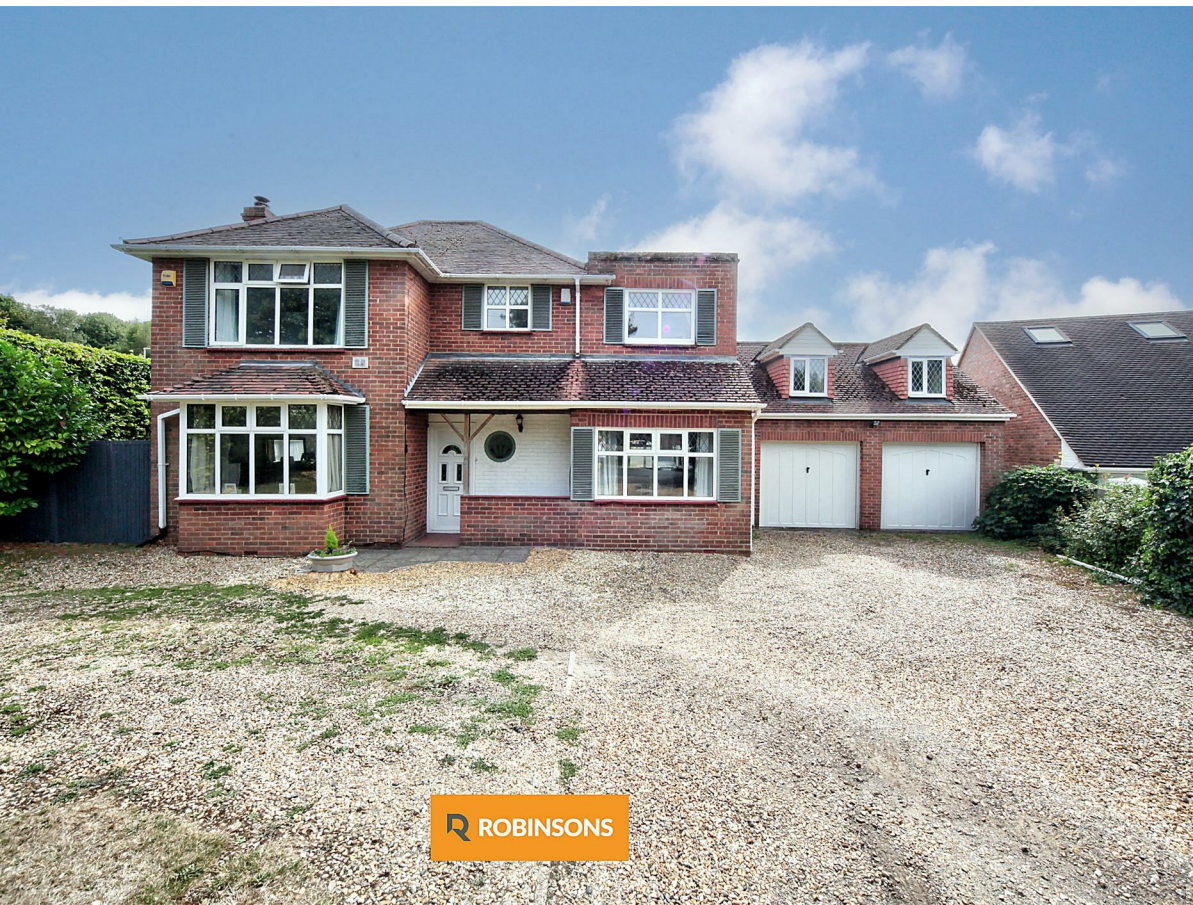


9 Totternhoe Road, West, Dunstable, Bedfordshire, LU6 2AF
Asking Price £685,000

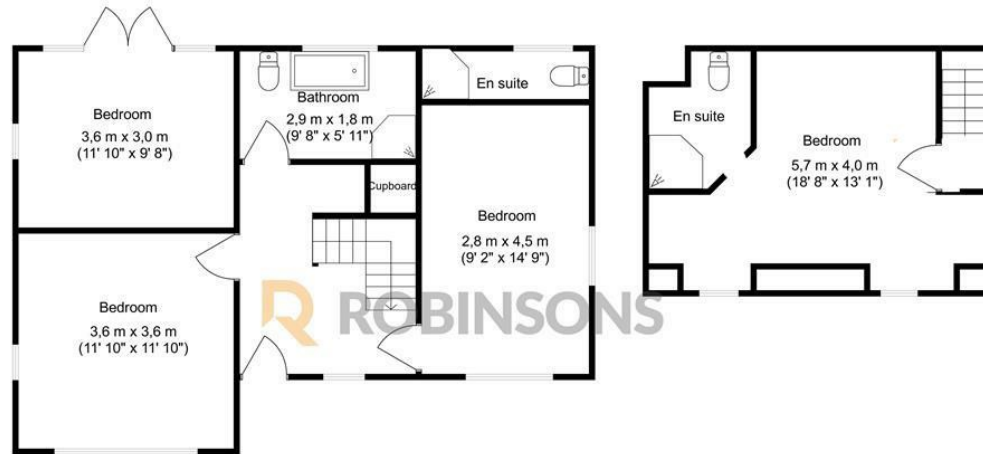


A BEAUTIFUL FOUR BEDROOM DETACHED FAMILY HOME WITH EXCELLENT POTENTIAL FOR A GRANNY ANNEXE OR WORKSPACE, SET ON ONE OF WEST DUNSTABLES MOST SOUGHT AFTER STREETS, OFFERING AMPLE OFF ROAD PARKING AND A PRIVATE WEST FACING GARDEN.

Occupying an enviable position and set well back from the road, this impressive home benefits from a wide frontage with a substantial driveway providing parking for up to six vehicles, alongside a double garage. Above the garage sits a highly flexible additional bedroom space, ideal as an annexe-style suite, guest accommodation, or a dedicated work-from-home setup.

The interior opens into a spacious entrance hall leading to a light-filled living room, perfectly suited for everyday family life. A separate dining room offers an excellent space for entertaining, while the extended kitchen forms the heart of the home, complete with ample fitted units, a breakfast area, and French doors that open directly onto the rear garden. A downstairs WC and internal access to the garage further enhance the practicality of the layout.

The first floor hosts four well-sized bedrooms. The principal bedroom enjoys a modern en-suite, while the second bedroom, positioned above the garage, also benefits from its own en-suite, making it ideal for



Floorplan produced by Woodside Photography
 Floorplan is for illustration purposes only and all measurements are approximate



20 West Street
 Dunstable
 Bedfordshire
 LU6 1SX
 01582 661112
sales@robinsons-estates.co.uk
<https://www.robinsons-estates.co.uk>

