



CLAPHAM PARK TERRACE, SW2

£575,000

Two Bedrooms
Private Garden
Share Of Freehold
Own Front Door
Period Features
Energy Rating: C

@marshandparsons
marshandparsons.co.uk

MARSH &
PARSONS



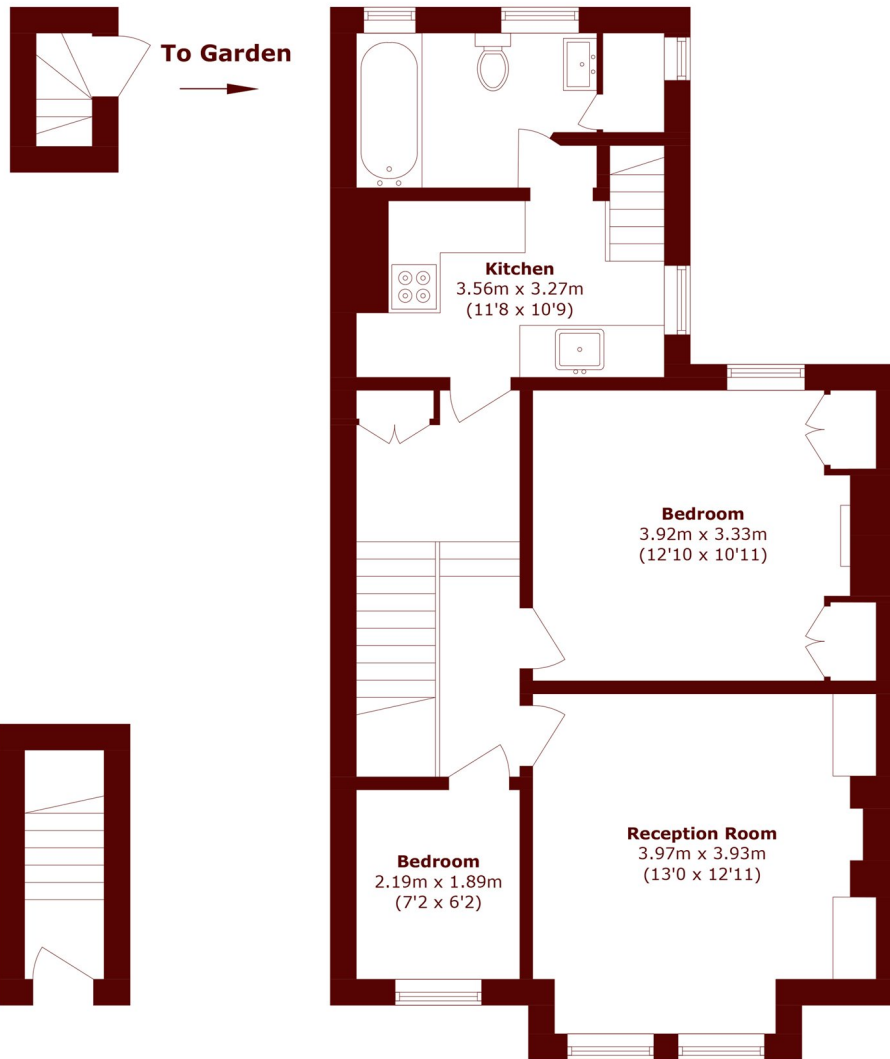
ABOUT THE PROPERTY

An excellent example of an upper maisonette arranged over the first floor of a handsome Victorian property, comprising two bedrooms, a spacious reception room, a family bathroom, and a kitchen. The property also boasts a well-maintained, west-facing private garden and is offered to the market chain free.

Lyham Road is a popular, tree-lined residential street, close to the vast array of independent shops, cafés, bars, and restaurants in both Clapham and Brixton, with the open green spaces of Clapham Common also nearby. The property is well connected, with both Clapham North Underground Station and Brixton Underground Station within walking distance.



STEP INSIDE CLAPHAM PARK TERRACE



Ground Floor

First Floor

Total area (approx.): 60.5 sq. m (651.2 sq. ft)

Brixton
020 7733 4595

Energy Rating: C We aim to make our particulars both accurate and reliable. However, they are not guaranteed; nor do they form part of an offer or contract. If you require clarification on any points then please contact us, especially if you're traveling some distance to view. Please note that appliances and heating systems have not been tested and therefore no warranties can be given as to their good working order

**MARSH &
PARSONS**