



St. Marys Crescent, TW7

£1,095,000

An elegant and wonderfully spacious four bedroom semi-detached house ideally located in the ever popular Osterley Village. This fantastic property consists of a bright and spacious double reception room, a capacious rear reception room with patio doors opening onto a beautiful lawn garden and a smart fitted kitchen with appliances.

St Marys Crescent is a quiet and sought after residential road with easy access to Osterley station (Piccadilly line), H38 and 91 buses and the A4/M4 motorways. Osterley Park and shops are a short distance away, as well as local schools and amenities.

Features

- Semi Detached Family House
- Four Bedrooms
- Large South-Facing Garden
- Potential to Extend (STPP)
- Sought After Residential Road
- No Onward Chain

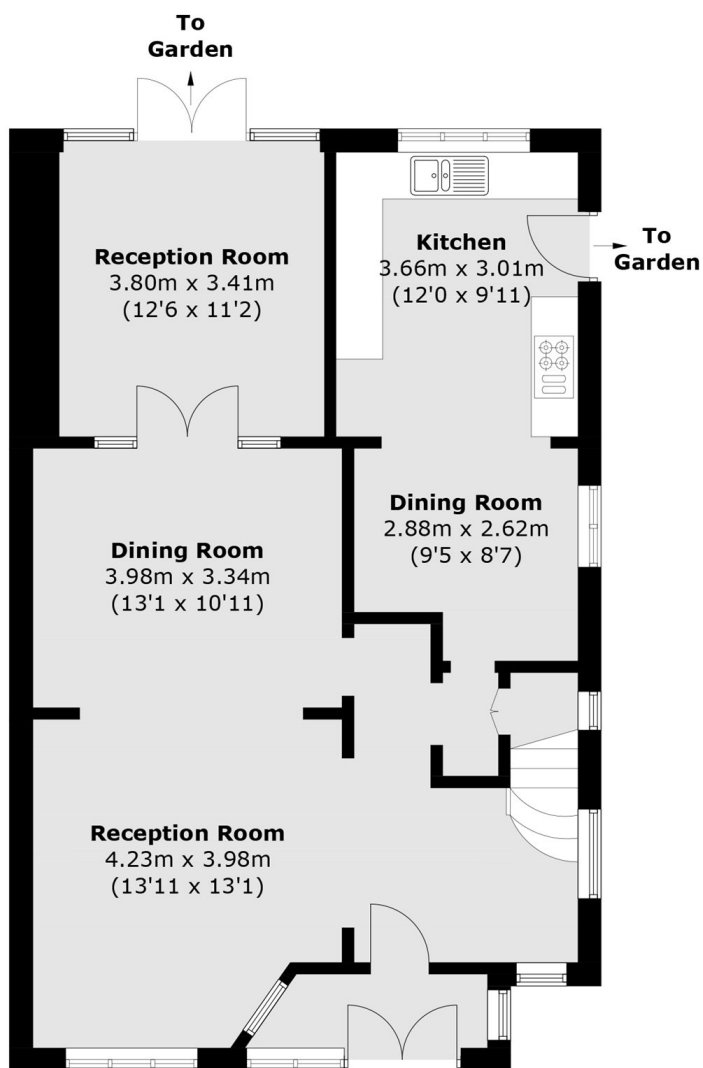


St. Marys Crescent, TW7

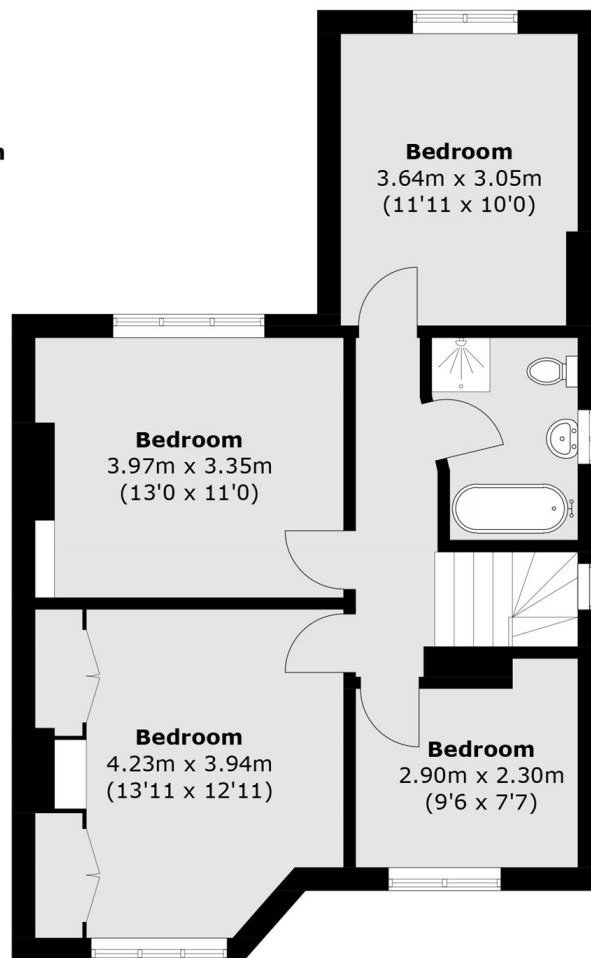
Upstairs, there are four generously sized double bedrooms with the master offering plenty of storage and a family bathroom with a bath and shower. There is further scope to extend (STPP).



St. Marys Crescent, Isleworth, TW7



Ground Floor



First Floor

Total area (approx.): 141.3 sq. m (1,520.9 sq. ft)