



MUSGROVE ROAD, SE14

£575,000

Share of freehold
Two double bedrooms
Open plan living
Private south facing garden
Telegraph Hill Conservation area
Energy rating: d

@marshandparsons
marshandparsons.co.uk

MARSH &
PARSONS



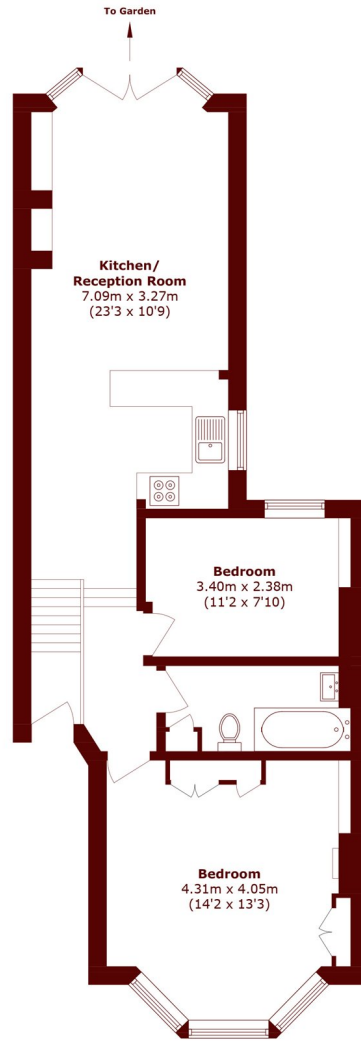
ABOUT THE PROPERTY

Set within an attractive Victorian conversion on one of Telegraph Hill's most sought-after residential roads, this beautifully presented two bedroom flat features a bright and spacious open plan kitchen/living area with direct access to a private south facing garden. Both bedrooms are well-proportioned, while the home further benefits from a 1/3 share of the freehold.

Musgrove Road is perfectly positioned within the Telegraph Hill Conservation Area, moments from the open green spaces of Telegraph Hill Park and within a few minutes walk of New Cross Gate station, with both Brockley and Nunhead stations also nearby, offering excellent transport links into the City and Canary Wharf.



STEP INSIDE MUSGROVE ROAD



Raised Ground Floor

Total area (approx.): 59.5 sq. m (640.5 sq. ft)

Brockley
020 8312 8312

Energy Rating: We aim to make our particulars both accurate and reliable. However, they are not guaranteed; nor do they form part of an offer or contract. If you require clarification on any points then please contact us, especially if you're traveling some distance to view. Please note that appliances and heating systems have not been tested and therefore no warranties can be given as to their good working order

**MARSH &
PARSONS**