

FREEHOLD



House - Terraced

# 6 WILLIS LANE, WHISTON, PRESCOT, L35 3RU

Offers Over

# £145,000

## FEATURES

- Three bedroom mid terraced property
- Close to transport links, local schools and Whiston Village
- Entrance hall, lounge with feature fireplace
- Modern kitchen with built in appliances
- Ground floor shower room with a modern suite
- Gardens to the front and rear
- An ideal first time buyers home
- We recommend an early viewing
- Freehold
- No Chain



**BROOKS**  
ESTATE AND LETTING AGENTS LTD

# 3 Bedroom House - Terraced located in Prescot

A beautifully presented three-bedroom mid-terraced home, ideally positioned in an elevated setting close to Whiston Village, with excellent local schools and convenient transport links nearby.

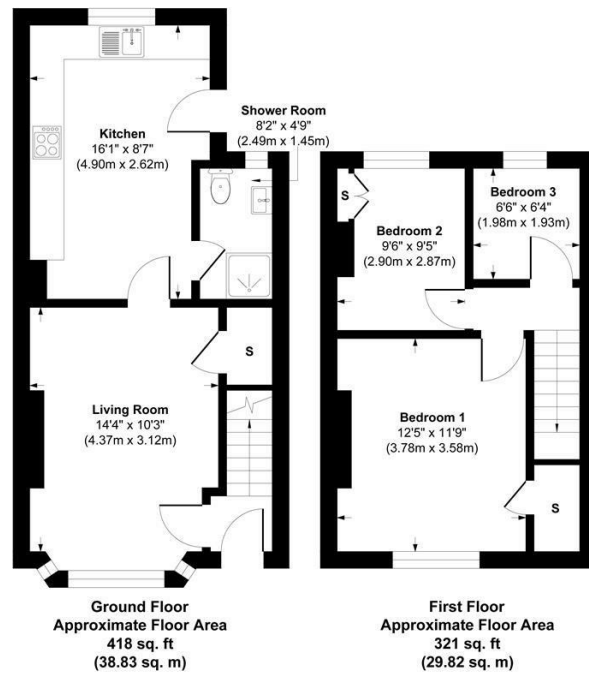
The well-planned accommodation briefly comprises an inviting entrance hall, a spacious lounge featuring an attractive fireplace, and a modern dining kitchen fitted with contemporary units and integrated appliances. Completing the ground floor is a stylish shower room with a three-piece suite.

To the first floor are three well-proportioned bedrooms, offering comfortable living space for families or first-time buyers alike.

Externally, the property benefits from a low-maintenance rear garden, while the front garden features a pathway leading to the entrance.

Early viewing is highly recommended to fully appreciate all this lovely home has to offer.

EPC Grade: D



Approx. Gross Internal Area 739 sq. ft / 68.65 sq. meters  
Whilst every attempt has been made to ensure the accuracy of the floorplan shown, all measurements, positioning fixtures fittings and any other data shown are an approximate interpretation for illustrative purposes only and are not to scale. No responsibility is taken for any errors, omission, miss-statement or use of data show.

Call us on

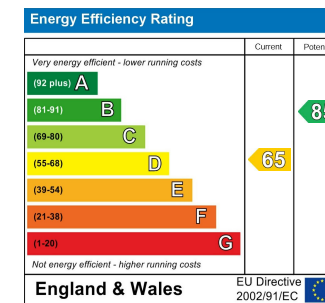
**0151 329 3313**

[prescot@brooksestateandlettings.co.uk](mailto:prescot@brooksestateandlettings.co.uk)

[www.brooksestateandlettings.co.uk](http://www.brooksestateandlettings.co.uk)

**Council Tax Band**

**A**



Agents Note: Whilst every care has been taken to prepare these particulars, they are for guidance purposes only. All measurements are approximate and are for general guidance purposes only and whilst every care has been taken to ensure their accuracy, they should not be relied upon and potential buyers are advised to recheck the measurements.

