



Francis House

Pump House Crescent, TW8

Asking Price £550,000

A two-bedroom two-bathroom lateral apartment in a stunning and contemporary space that provides a comfortable and convenient living experience, with a range of amenities on offer to enhance the quality of life for residents.

CHESTERTONS



Francis House

Pump House Crescent, TW8

- Two Bedrooms
- Two Bathrooms
- West facing balcony
- Firth floor with lift
- Gated development
- Private parking, Concierge and Gym



This two-bedroom, two-bathroom lateral apartment is located on the 5th floor of a modern development and boasts an open plan kitchen and living room that creates a spacious and comfortable living environment. The apartment is designed with contemporary finishes and high-quality fixtures throughout, providing a stylish and modern ambiance. One of the highlights of this apartment is its west-facing balcony, which provides a perfect setting for relaxing and entertaining. The balcony can be accessed directly from the living room, allowing for seamless indoor-outdoor living. The bedrooms are both generously sized and offer ample storage space, while the two well-appointed bathrooms (one en-suite) feature high-quality fixtures and fittings.

The development provides a range of amenities, including a lift, porter, and secure parking, offering residents the utmost convenience and security. Additionally, a gym is available for residents to enjoy, providing a great opportunity to stay fit and healthy.

Tenure: Leasehold 985 years remaining

Service Charge: £5,500 per annum

Ground Rent: £300 per annum

Local Authority: Hounslow

Council Tax Band: E

Score	Energy rating	Current	Potential
92+	A		
81-91	B		
69-80	C	75 C	86 B
55-68	D		
39-54	E		
21-38	F		
1-20	G		

Chestertons Kew Sales

1 Royal Parade

Kew

Richmond

TW9 3QD

kew@chestertons.co.uk

020 8104 0340

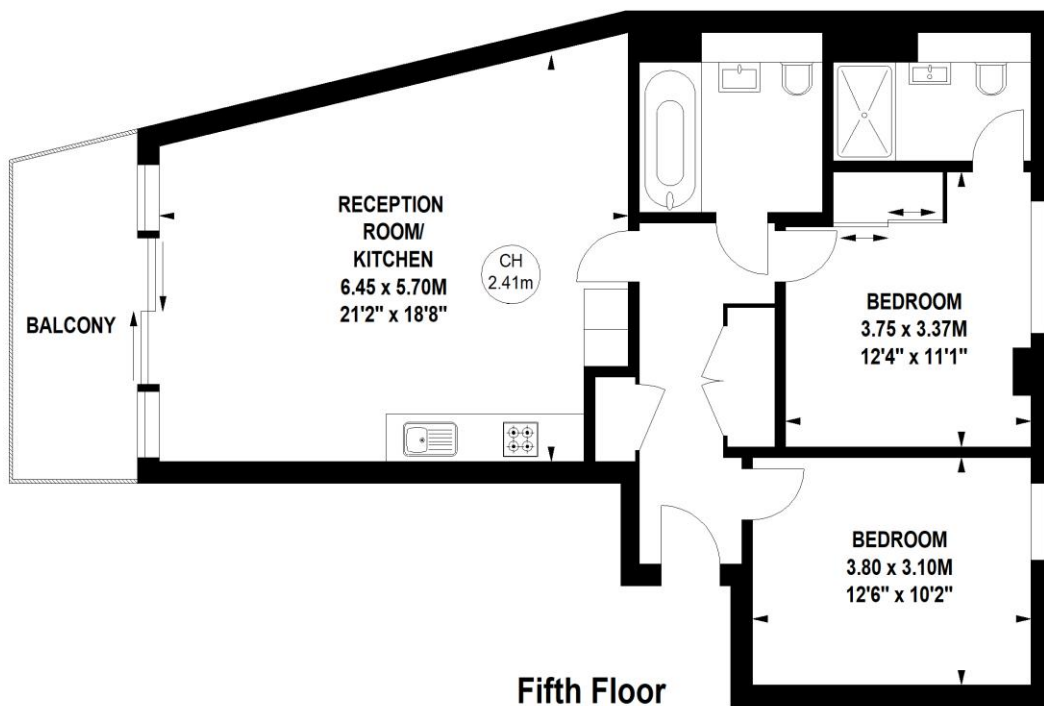
chestertons.co.uk

**Francis House,
Pump House Crescent,
Brentford,
Middlesex, TW8**

Approximate gross internal area

78.41 sq m / 844 sq ft

Key :
CH - Ceiling Height



**Not to scale, for guidance only and must not be relied upon as a statement of fact.
All measurements and areas are approximate only**

