



Cascade Avenue, London, N10 3PT

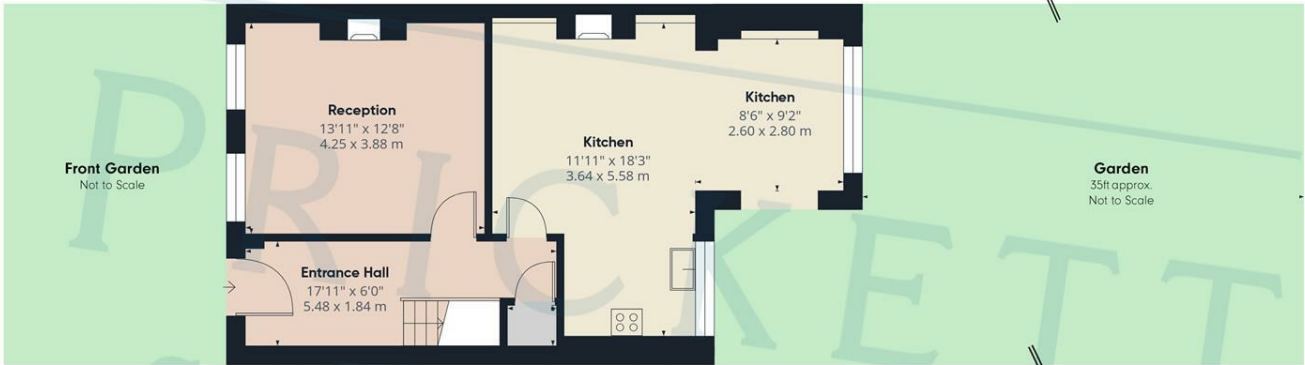
This charming Collins built Arts and Crafts family home is idyllically located in a peaceful spot on the ever popular Rookfield Estate. With pretty period features and a lovely secluded garden, this is like country living with all of the amenities of Muswell Hill to hand! A welcoming entrance hall leads to the beautiful front reception room with feature fireplace and wood flooring. The rear reception has been opened up to the kitchen to create a fabulous kitchen/dining/family room. Doors open onto a large patio and west facing lawn area making this a superb spot for outdoor dining and entertaining.

There are three generous bedrooms, and a family bathroom on the first floor and a lovely loft conversion which created the fourth bedroom, en-suite shower room and plenty of storage into the eaves.

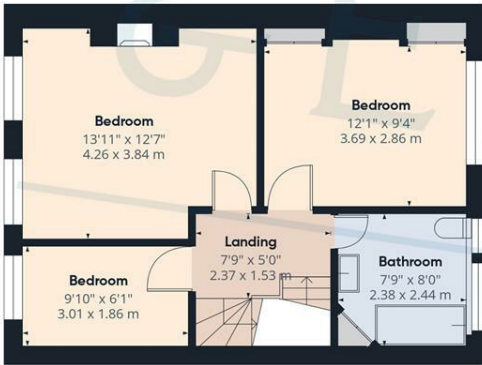
It's easy to see why the Rookfield Estate is quintessentially desirable. Country living in the city springs to mind - peace and quiet, pretty houses with beautiful gardens and yet schools, transport and the buzz of both Muswell Hill and Crouch End Broadways with their lively mix of independent shops, restaurants, cafes and cinemas are close by. Green spaces abound - Ally Pally, Highgate and Queens Woods all nearby. Unfurnished EPC: D Council tax band: F Deposit £5190. Available 24th August

£4,500 Per Month

Ground Floor



First Floor



Second Floor



Approximate Gross Internal Area:

1366.2 ft²
126.92 m²

While every attempt has been made to ensure accuracy, all measurements are approximate, not to scale. This floor plan is for illustrative purposes only.

