



Edenbridge Road, Cheadle Hulme, SK8 5PX

£375,000

SNAPEs
SALES & LETTINGS AGENTS





Edenbridge Road

Cheadle Hulme, Cheadle

Council Tax band: C

Tenure: Freehold

EPC Energy Efficiency Rating: C

EPC Environmental Impact Rating:

- Modernised Detached Home
- Entrance, Living Room & Modern Kitchen Diner
- Conservatory & Snug
- Three Bedrooms & Modern Bathroom
- Private South Easterly Facing Rear Garden
- Driveway Parking & Garage
- Freehold
- Catchment For Oak Tree Primary & Cheadle Hulme High School



SNAPES
SALES & LETTINGS AGENTS



Living Room

20' 8" x 14' 1" (6.30m x 4.29m)

Kitchen

22' 8" x 13' 3" (6.92m x 4.04m)

Conservatory

14' 6" x 9' 6" (4.42m x 2.89m)

Snug

10' 2" x 6' 0" (3.11m x 1.82m)

Master Bedroom

19' 4" x 10' 2" (5.90m x 3.09m)

Bedroom Two

9' 9" x 9' 3" (2.96m x 2.82m)

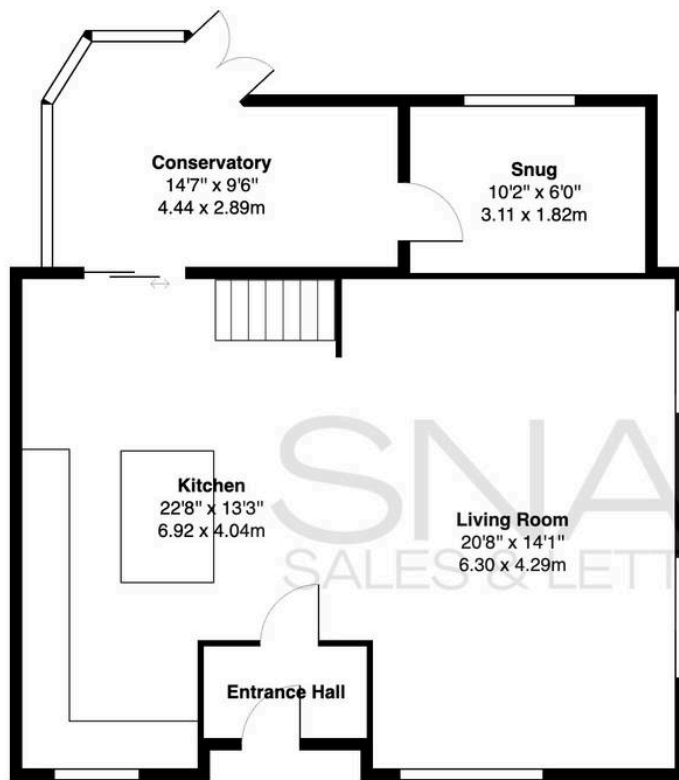
Bedroom Three

9' 11" x 9' 9" (3.02m x 2.97m)

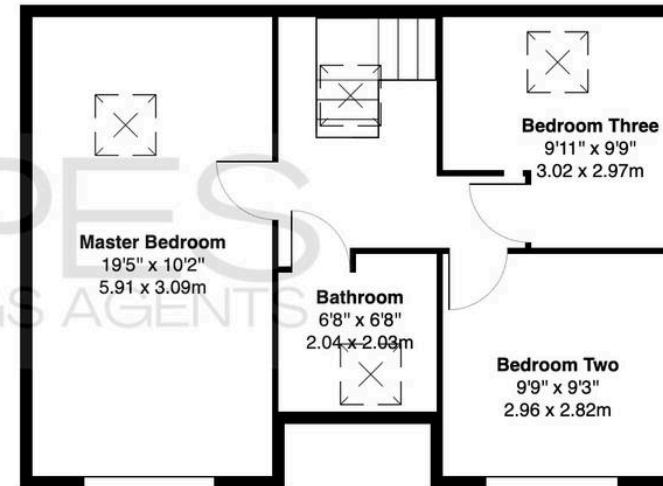
Bathroom

6' 8" x 6' 8" (2.04m x 2.03m)





Ground Floor
Approximate Area: 759 ft² ... 70.6 m²



First Floor
Approximate Area: 505 ft² ... 46.9 m²

Approximate Total Area: 1264 ft² ... 117.4 m²

All measurements are approximate.
The floorplan may not include chimney breasts or support nibs and/or very small recess areas.
If a total floor area is quoted, this will include ALL areas shown on the plan, inc garages.
The area is calculated by the software and is approximate.

Cheadle Hulme Office

Andrew Snape Estate Agents, 31 Station Road – SK8 5AF

0161 485 2244 • cheadlehulme@snapes.co.uk • www.snapes.co.uk/