



## Westferry Road, E14

### £225,000

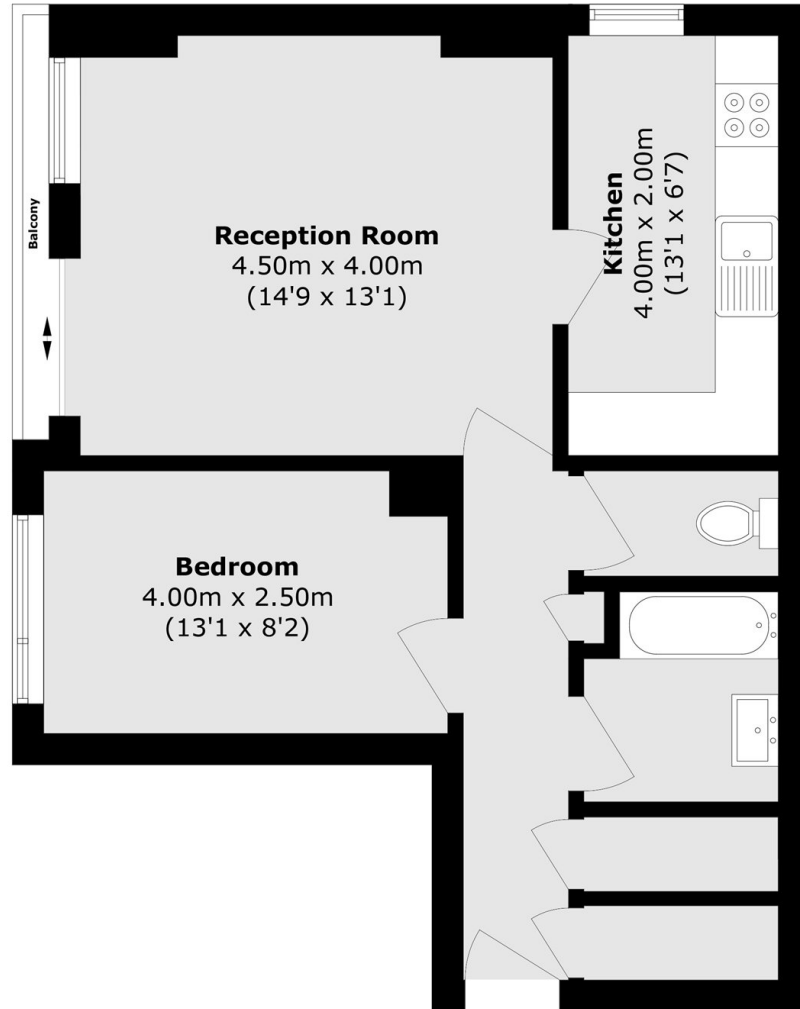
Cash Buyers Only. Offered to the market on a chain free basis is this one bedroom home ideally located for Canary Wharf. Features include a private balcony, an on-site porter, a long lease, low service charge, low ground rent and no onward chain.

Canary Wharf is approximately a 10 minute walk offering endless restaurants, bars, shopping facilities and transport links including Jubilee & Elizabeth Lines, Cross Rail, DLR stations.

### Features

- Private Balcony
- On Site Porter
- Sixth Floor
- Low Service Charge
- Low Ground Rent
- 175 Year Lease

# Westferry Road, London, E14



Total area (approx.): 52.1 sq. m (560.8 sq. ft)  
Balcony area (approx.): 2.0 sq. m (21.5 sq. ft)