



Station Yard, TW1

£999,950

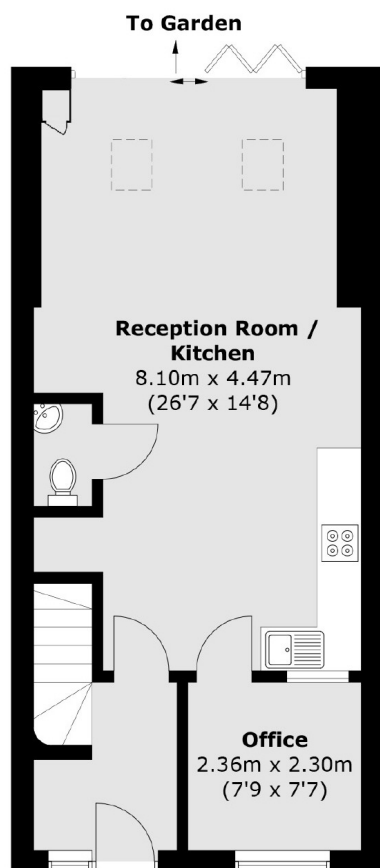
Offered with no onward chain is this impressive four/ five bedroom townhouse that has been renovated by the current owner to an excellent standard throughout and it benefits from having off street parking to the front, two bath/ shower rooms, a downstairs W.C and rear access.

Station Yard is tucked away yet just a stones throw away from Twickenham High Street with it's array of shops and restaurants. There is easy access to the River Thames and Marble Hill Gardens for walks. Commuters can enjoy Twickenham station with it's fast links to London Waterloo, great bus routes and easy access to the M3/ M25 and Heathrow Airport.

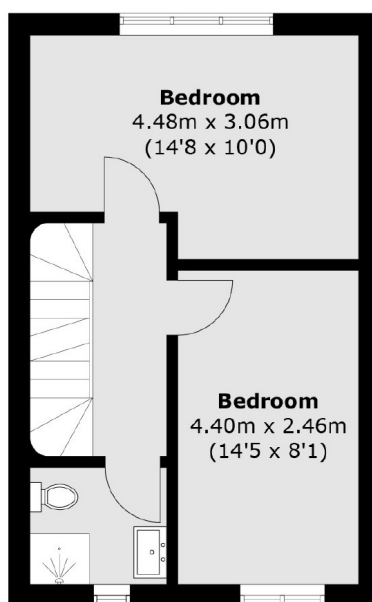
Features

- Four/Five Bedrooms
- Two/Three Receptions
- Off Street Parking
- Rear Access
- Fully Renovated Throughout
- No Onward Chain

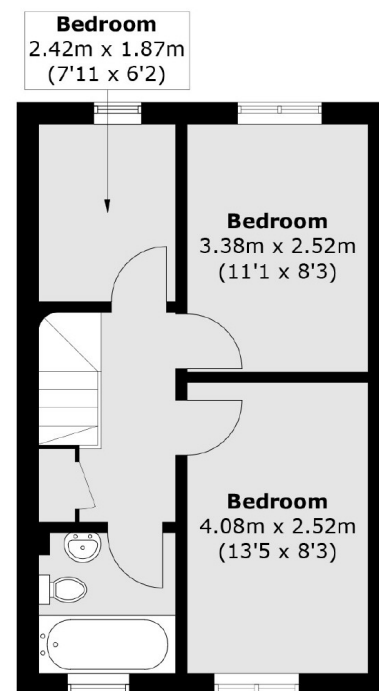
Station Yard, Twickenham, TW1



Ground Floor



First Floor



Second Floor

Total area (approx.): 112.4 sq. m (1,209.8 sq. ft)