



Approximate Gross Internal Area
135.0 sq m / 1453.12 sq ft
(Excludes External Boiler / Storage)

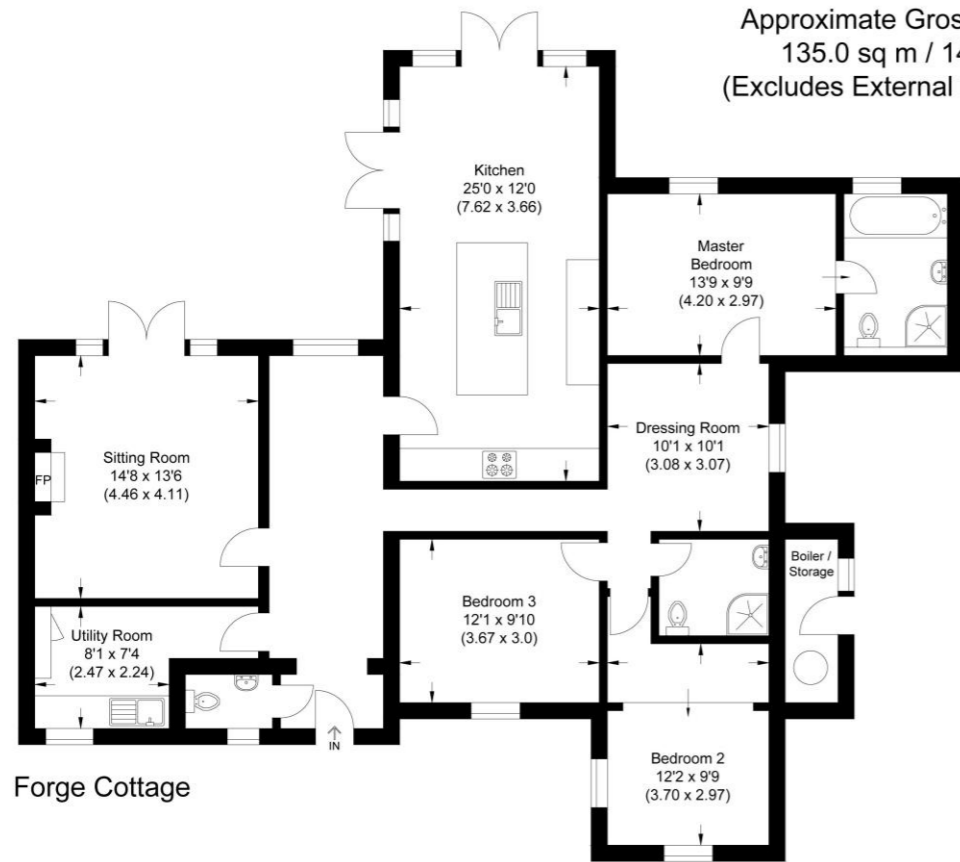


Illustration for identification purposes only, measurements are approximate, not to scale.

Disclaimer: We wish to inform prospective purchasers that we have prepared these sales particulars as a general guide. We have not carried out a detailed survey, nor tested the services, appliances and specific fittings. Room sizes are approximate and rounded: they are taken between internal wall surfaces and therefore include cupboards / shelves, etc. Accordingly, they should not be relied upon for carpeting, curtains / blinds and kitchen equipment, whether fitted or not, are deemed removable by the vendor unless specifically itemised within these particulars.

Postcode for sat nav: GU20 6PA



School Road, Windlesham

£975,000



The Old Dairy, 7 Updown Hill, Windlesham, Surrey GU20 6AF
enquiries@newtonrowe.co.uk | 01276 986900

www.newtonrowe.co.uk





School Road, Windlesham

A beautifully appointed single storey cottage with a spacious plot and rural views to the rear. The immaculate home offers an array of features including a log burner, multiple vaulted ceilings and a Neptune Kitchen.

FEATURES

- Single storey
- Stone floors
- Vaulted ceilings
- Neptune shaker style kitchen
- Lovely views to the rear
- Wood panelling
- French doors
- Shutters

ACCOMMODATION

- Entrance hall
- Downstairs cloakroom
- Sitting room with log burner
- Kitchen/dining room with marble worktops
- Utility room
- Master bedroom en-suite
- Dressing room/study
- Two further bedrooms
- Shower room
- Boiler/storage cupboard

OUTSIDE

- South westerly facing garden with patio
- Gravel driveway with double car barn

LOCAL AUTHORITY/COUNCIL TAX

Surrey Heath – Band E

EPC RATING

C





