



Walfield Avenue, Whetstone, N20 9PR  
£3,200 Per Calendar Month      Council Tax Band F

**REAL ESTATES**  
Est. 1981

Estate Agents · Residential Sales · Investments · Lettings

**\*\*AVAILABLE 15TH JULY\*\*** Real Estates are delighted to present this elegant, light filled, well proportioned, practically arranged **FOUR BEDROOM** semi-detached family home in N20.

Located in a desirable, peaceful crescent just off Whetstone High Road with its independent shops, boutiques, coffee shops & restaurants with good transport links. Totteridge & Whetstone station is an easy walk away and bus links are excellent. The local area has an Everyman Cinema, a M&S food hall, Waitrose & Boots nearby as well as many highly regarded schools.

This welcoming property has been recently, thoughtfully, refurbished and painted, with a complete new heating system, new showers, taps and kitchen appliances with a new kitchen floor currently being installed. This well-maintained house has ample living space including: a separate lounge; a characterful open plan kitchen diner, a downstairs wc; a fitted out separate utility/ boot room and a large integrated garage (with useful shelving) that adds to the great practicality of this home. To the first floor - with an airy, split landing, you will find 3 double bedrooms, 1 smaller bedroom and 2 well presented bathrooms.

To the exterior you will find a pretty wrap around garden, and a large drive way for multiple cars with useful side access. For nature lovers & walkers, access to Brook farm open space, a delightful green space, is just diagonally across the road. A brisk walk through this lush greenery takes you to Totteridge & Whetstone station ( Zone 4) or alternatively, Oakleigh Park station (mainline).

Not suitable for HMO sharers

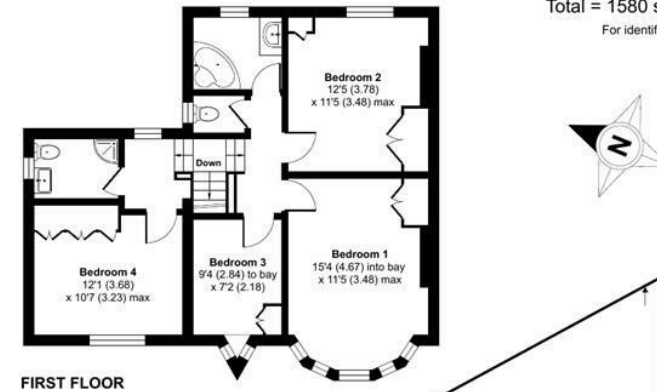
## Walfield Avenue, Whetstone, N20

Approximate Area = 1390 sq ft / 129.1 sq m

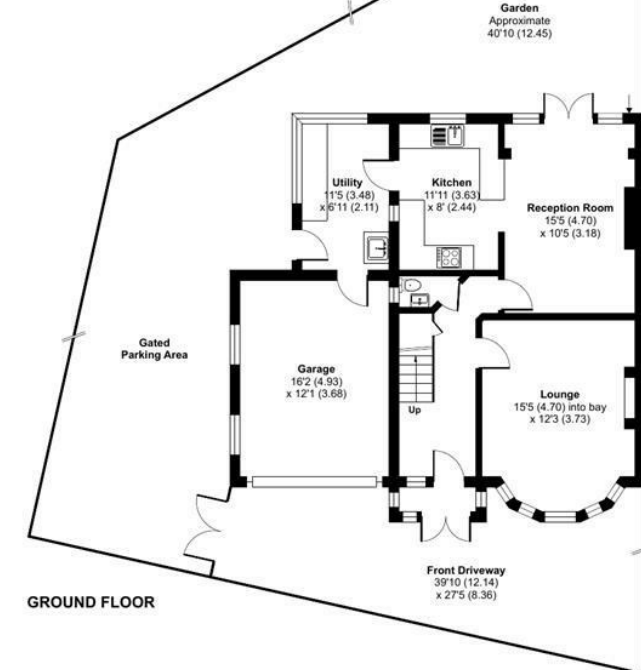
Garage = 190 sq ft / 17.6 sq m

Total = 1580 sq ft / 146.7 sq m

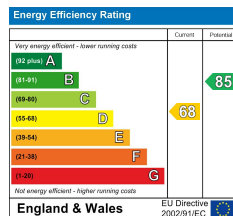
For identification only - Not to scale



FIRST FLOOR



GROUND FLOOR



Floor plan produced in accordance with RICS Property Measurement Standards incorporating International Property Measurement Standards (IPMS2 Residential). © nichecom 2024. Produced for Real Estates. REF: 1073169