



Not for marketing purposes INTERNAL USE ONLY

Avenue Rise  
Bushey





### Property Description

Situated on the highly sought-after Avenue Rise, a private road in the heart of Bushey Village, this attractive three-bedroom semi-detached home offers an exceptional blend of privacy, convenience and family living. The property is ideally positioned within walking distance of Bushey Village High Street, local amenities, excellent schooling and well-connected transport links.

Internally, the home is well arranged with two spacious reception rooms, providing flexible living and entertaining space. A modern fitted kitchen is complemented by a separate utility room, walk-in larder, and a convenient downstairs shower room, making the layout both practical and family-friendly. The property is fully double glazed, has a bright feel and can be extended to the rear, side and into the loft if needed (STPP).

Externally, the property continues to impress with a private, good-sized rear garden that is not overlooked, offering a peaceful outdoor retreat. Further benefits include a garage and driveway parking, completing this superb home in one of Bushey's most desirable locations.

### Ground Floor

#### Entrance Hall

Door to front aspect and storage cupboard.

#### Cloakroom

Water closet, heated towel rail, shower cubicle, vanity unit and fully tiled.

#### Lounge

Window to rear aspect, French doors to garden, electric fire and television point.

#### Dining Room

Bay window to front aspect, television point, and gas fire.

#### Kitchen

Window to rear and side aspect, door to utility, wall and base units, quartz work surfaces, boiler-house, plumbing for dishwasher/washing machine, space for fridge/freezer, large bowl sink with drainer, Neff electric oven, gas hob and cooker-hood.

#### Utility Room

Window to rear aspect, access to garage, door to rear garden, wall and base units, and plumbing for washing machine/dryer.

### First Floor

#### Landing

Large space, window to front aspect and hatch to loft (boarded and insulated).

#### Bedroom 1

Window to front aspect and radiator.

#### Bedroom 2

Window to rear aspect, built in wardrobe and radiator.

### Bedroom 3

Window to rear aspect, fitted wardrobes, airing cupboard, and radiator.

### Bathroom

Window to side aspect, fully tiled, bath with mixer taps, shower cubicle, water closet, and vanity unit.

### Outside

### Front

Driveway and side access.

### Rear

Mature rear garden, large patio, laid to lawn and shrubs.

### Garage

Power, light, and up & over doors.



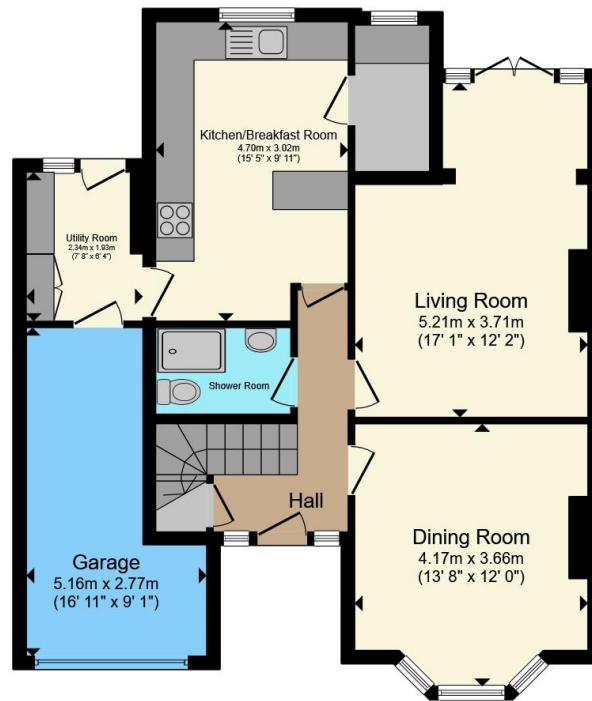




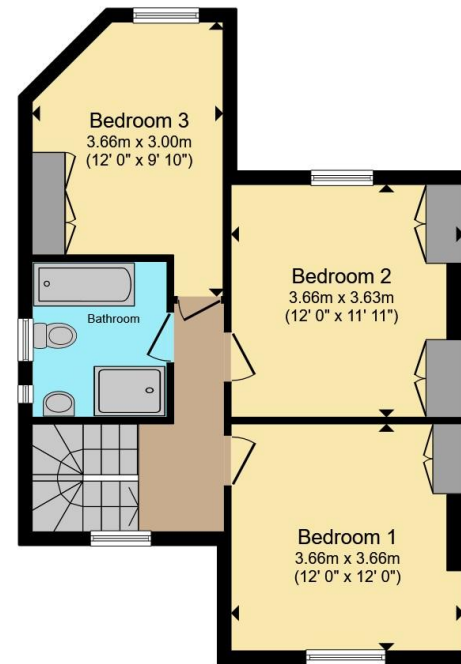








**Ground Floor**



**First Floor**

Total floor area 127.3 m<sup>2</sup> (1,371 sq.ft.) approx

This floor plan is for illustrative purposes only. It is not drawn to scale. Any measurements, floor areas (including any total floor area), openings and orientation are approximate. No details are guaranteed, they cannot be relied upon for any purpose and they do not form part of any agreement. No liability is taken for any error, omission or misstatement. A party must rely upon its own inspection(s). Powered by [www.propertybox.io](http://www.propertybox.io)

**Connells**

To view this property please contact Connells on

**T 020 8950 4404**  
**E [bushey@connells.co.uk](mailto:bushey@connells.co.uk)**

86 High Street  
BUSHEY WD23 3HD

EPC Rating: D Council Tax  
Band: F

Tenure: Freehold

**check out more properties at [connells.co.uk](http://connells.co.uk)**



1. MONEY LAUNDERING REGULATIONS Intending purchasers will be asked to produce identification documentation at a later stage and we would ask for your co-operation in order that there will be no delay in agreeing the sale. 2. These particulars do not constitute part or all of an offer or contract. 3. The measurements indicated are supplied for guidance only and as such must be considered incorrect. Potential buyers are advised to recheck measurements before committing to any expense. 4. We have not tested any apparatus, equipment, fixtures, fittings or services and it is in the buyers interest to check the working condition of any appliances.

Connells Residential is registered in England and Wales under company number 1489613, Registered Office is Cumbria House, 16-20 Hockliffe Street, Leighton Buzzard, Bedfordshire, LU7 1GN. VAT Registration Number is 500 2481 05.

**See all our properties at [www.connells.co.uk](http://www.connells.co.uk) | [www.rightmove.co.uk](http://www.rightmove.co.uk) | [www.zoopla.co.uk](http://www.zoopla.co.uk)**

Property Ref: BUS308395 - 0003