

Horton & Senate



57 Selby Close, Birmingham, B26 2AP

£130,000

- ***No Chain***
- First Floor
- Modern Kitchen
- Must View!
- Two Double Bedrooms
- Well Presented
- Perfect for First Time Buyers

57 Selby Close, Birmingham B26 2AP

A well presented two bedroom first floor maisonette, perfect for first time buyers or investors. There are two double bedrooms, a modern kitchen, lounge and bathroom, situated close to local shops and amenities.

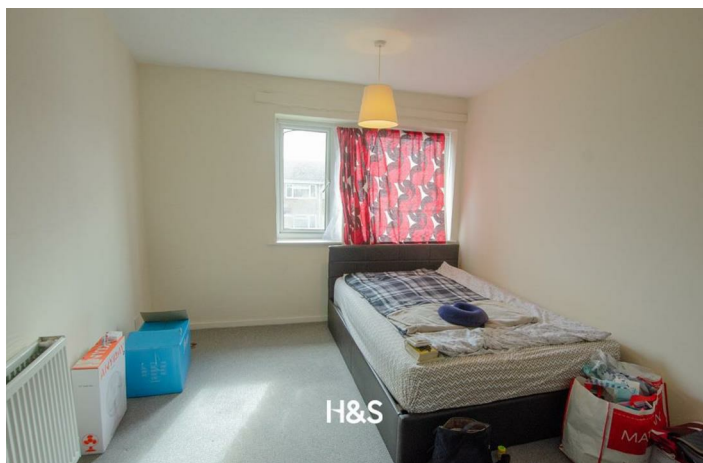
2

1

1

C

Council Tax Band:



APPROACH

Via steps leading to the front door

HALLWAY

Stairs leading to the first floor landing.

Landing

Doors to first floor rooms

Lounge

Double glazed window to the front elevation, central heating radiator and door to the kitchen.

Kitchen

A range of wall and floor base units, space for a washing machine and tumble dryer. Double glazed window to the rear elevation and central heating radiator.

Bedroom One

Central heating radiator and double glazed window to the front elevation.

Bedroom Two

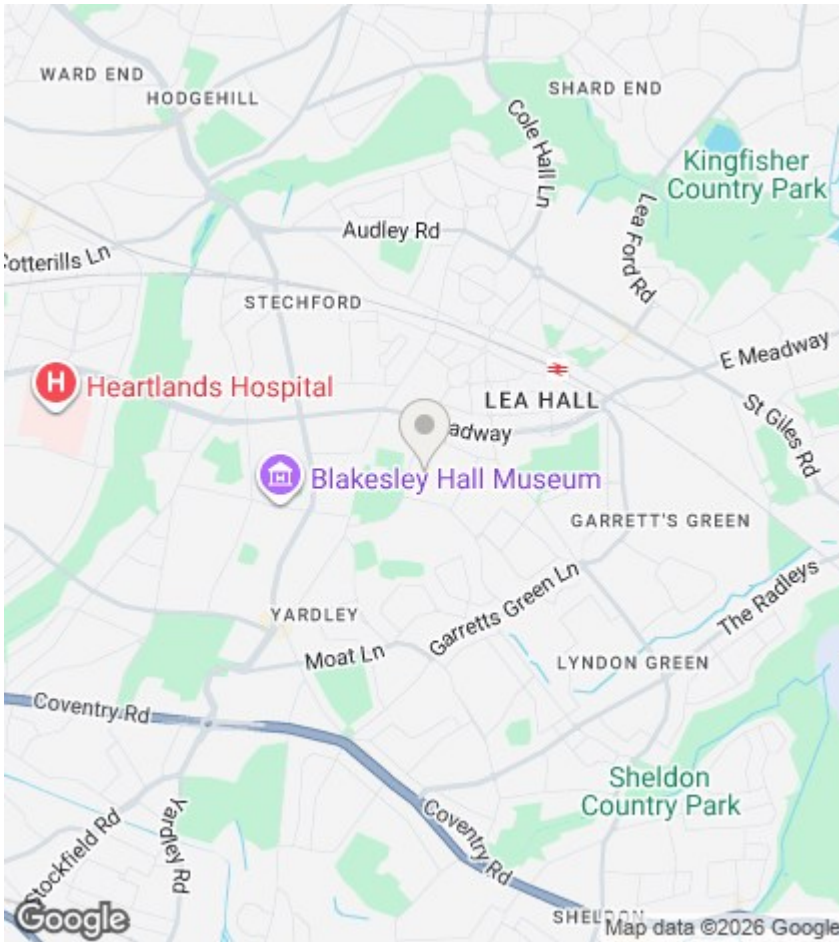
Central heating radiator, double glazed window to the rear elevation and fitted wardrobes.

Bathroom

Suite comprises of a bath with overhead shower, sink and WC. There is tiling to splash prone areas, a central heating radiator and an obscure window to the rear elevation.

Garage.





Directions

Viewings

Viewings by arrangement only. Call 0121 663 0099 to make an appointment.

EPC Rating:

C

