

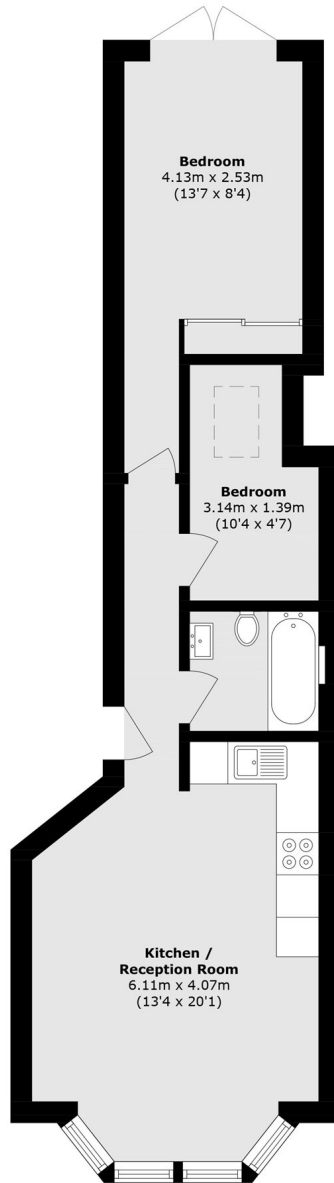


Lynton Road, W3

£600 pw (£2,600 pcm)

A recently converted two bedroom period conversion garden flat. This immaculate property has been finished to the highest standard throughout, comes with a large south facing landscaped garden.

Lynton Road is moments from the Elizabeth line station, Acton Main Line and within half a mile of Acton Central and the shops and amenities of Churchfield Road.



Total area (approx.): 48.1 sq. m (517.7 sq. ft)

Robertson Smith & Kempson Acton Lettings
137 High Street,
Acton, London, W3
020 8896 3967
actonlettings@robertsonsmithandkempson.co.uk

Energy Rating: C. We aim to make our particulars both accurate and reliable. However they are not guaranteed; nor do they form part of an offer or contract. If you require clarification on any points then please contact us, especially if you're traveling some distance to view. Please note that appliances and heating systems have not been tested and therefore no warranties can be given as to their good working order.