



24 Edgumbe Park Road, Peverell, Plymouth, Devon, PL3 4NL

Price £300,000



Situated in the ever-popular Peverell area of Plymouth, this exceptionally well-maintained mid-terraced home offers the perfect blend of modern living and timeless character. Ideally located close to a range of local amenities, including highly regarded schools, shops, and within walking distance of Central Park and the leisure centre, this property is perfectly suited to families and professionals alike.

Having been thoughtfully modernised over the years, the home retains many of its original period features, creating a warm and welcoming atmosphere throughout. The accommodation begins with a welcoming hallway with a door to the charming lounge featuring an attractive fireplace and a beautiful bay window to the front, allowing plenty of natural light to flood the room.

To the rear of the property is a stylish semi-open-plan kitchen and dining room, fitted with a comprehensive range of modern units, larder cupboard and double oven and hob and offering an ideal space for both everyday living and entertaining. A door opens into a delightful conservatory, providing an additional reception area with lovely views over the garden.

The first floor comprises three well-proportioned bedrooms and a contemporary family shower room with a double shower, finished to a high standard.

A particular highlight of this wonderful home is the beautifully maintained enclosed walled garden. Designed to provide a peaceful outdoor retreat, it features a neat lawn, well-stocked flower beds, and plenty of space to relax or entertain.

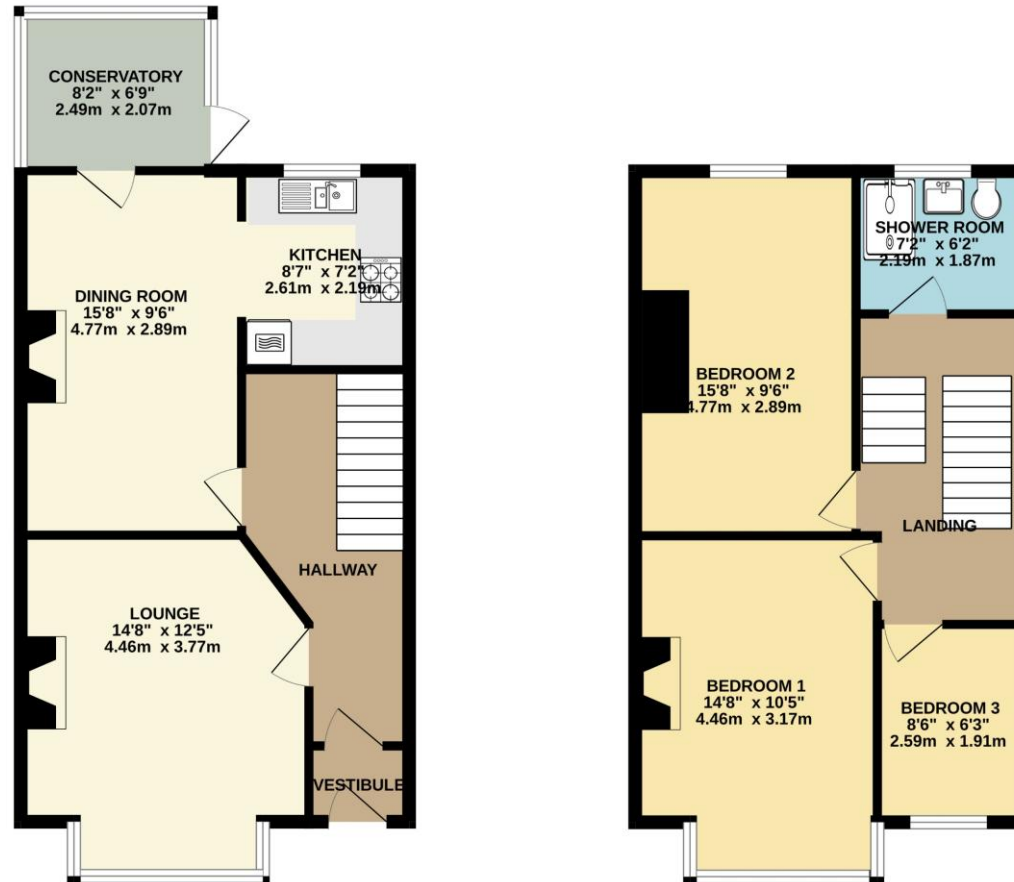
This is a superb opportunity to acquire a characterful home in one of Plymouth's most sought-after residential locations, offering stylish accommodation, excellent outdoor space, and a convenient setting close to everything Peverell has to offer.



To view this property call Lang Town & Country Estate Agents on **01752 256000**.

www.langtownandcountry.com





TOTAL FLOOR AREA: 1026 sq. ft. (95.4 sq. m.) approx.
 Whilst every attempt has been made to ensure the accuracy of the floorplan contained here, measurements of doors, windows, rooms and any other items are approximate and no responsibility is taken for any error, omission or mis-statement. This plan is for illustrative purposes only and should be used as such by any prospective purchaser. The services, systems and appliances shown have not been tested and no guarantee as to their operability or efficiency can be given.
 Made with Metropix ©2025



Lang Town & Country
 6 Mannamead Road
 Mannamead
 Plymouth
 PL4 7AA
 Tel: 01752 256000
 Email: property@langtownandcountry.com

Lang Town & Country endeavour to ensure the accuracy of property details produced and displayed, we have not tested any apparatus, equipment, fixtures, fittings or services and so cannot verify that they are connected, in working order or fit for purpose. A buyer must check the availability of any property and make an appointment to view before embarking on any journey to see a property.

