

**PLATT'S LANE
HAMPSTEAD
LONDON
NW3**



Bargets Estate Agents

A CHARMING FAMILY HOME IN THE HEART OF HAMPSTEAD

MOMENTS FROM HAMPSTEAD HEATH, NORTH LONDON'S ICONIC GREEN SPACE



A charming family home in the heart of Hampstead, uniquely in the same ownership for 55 years. Arranged over three floors, the generous and flexible accommodation offers enormous potential for an incoming purchaser to create a home to their specification.

Further benefits include: driveway off-street parking and an integral garage with through side access leading to the rear garden.

This property offers an ideal blend of character, family living and convenient access to amenities.

Viewings are highly encouraged

Hampstead is renowned for its cultural heritage, enjoying access to elite schools, fine dining and a vibrant community life. Conveniently located just moments away from the open spaces of Hampstead Heath & Golders Hill Park. The vibrant cafés, boutiques, and restaurants of Hampstead Village are within easy reach, coupled with the extensive transport facilities along the Finchley Road and local amenities by Childs Hill.

FREEHOLD

GUIDE PRICE

£2,395,000

Subject to Contract

Entrance Hall / Reception Room / Dining Room / Kitchen / Breakfast Room / Principal Bedroom Suite / 4 Further Bedrooms / Family Bathroom / Guest Cloakroom WC / Store Area / Rear Garden / Integral Garage / Side Access through Garage / Driveway Off-Street Parking















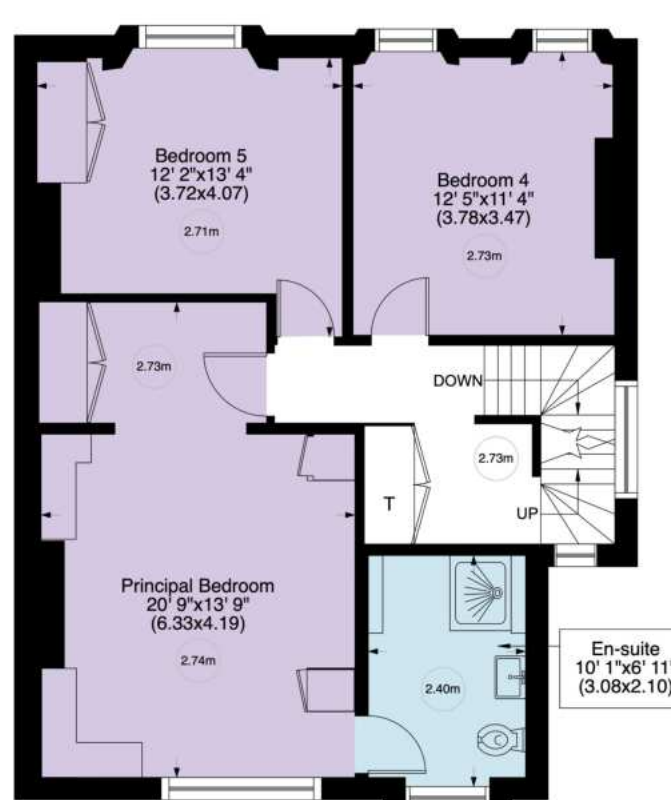
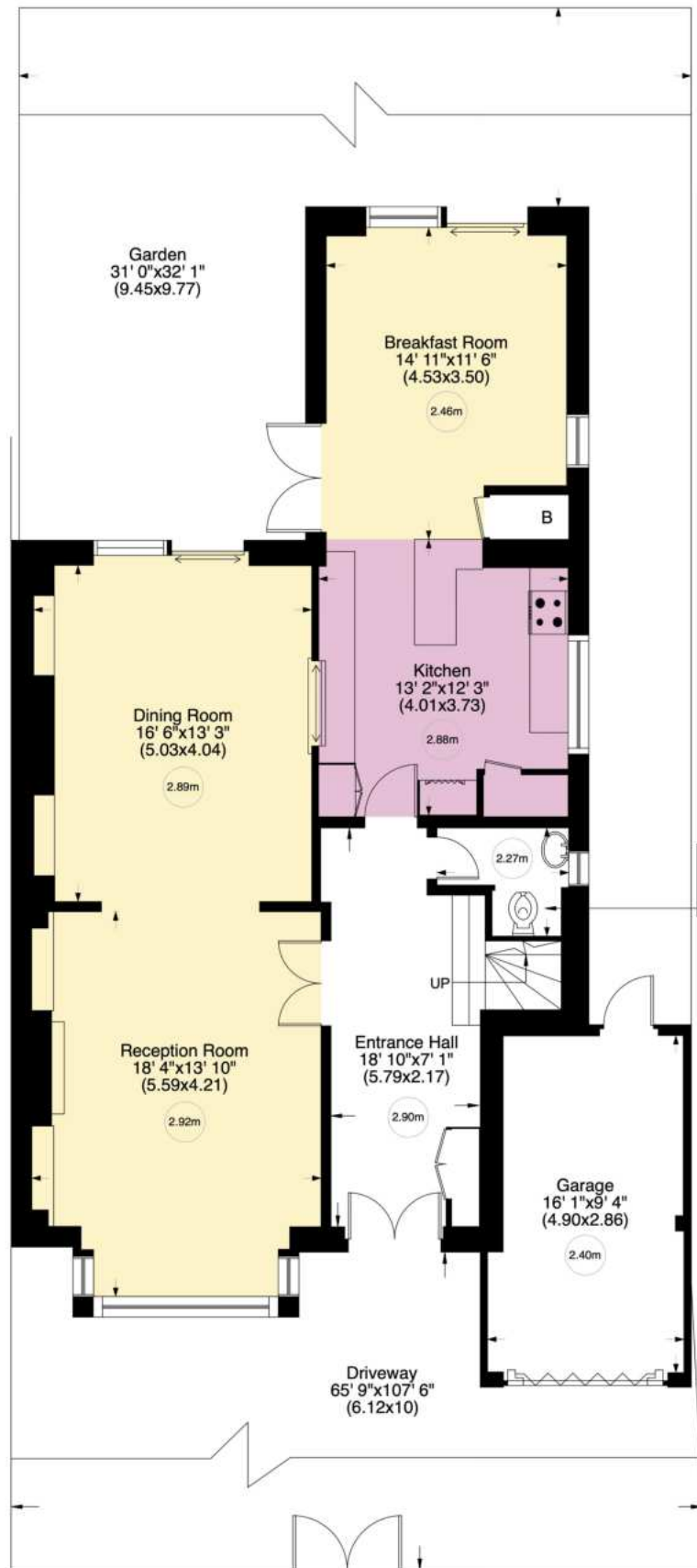
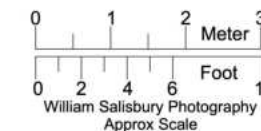


Platt's Lane NW3

Gross internal area (approx.)
 246 Sq m (2653 Sq ft) Including Under 1.5
 243 Sq m (2616 Sq ft) Excluding Under 1.5

Site Area (approx.)
 Acre 0.074 Hectares 0.03

For identification only, Not to Scale
 Produced for and copyrighted, to Bargets ©



Not to Scale, for guidance only and must not be relied upon as a statement to fact.
 All measurements areas are approximate only
 (and have been prepared in accordance with the current edition of the RICS Code of Measuring Practice).