

43 Buckingham Road

Epping, Essex

Council Tax band: F

Tenure: Freehold

- Five bedroom family home
- Two en-suite shower rooms
- Short walk to Epping high street
- Utility room
- Close to local schools



Kitchen / Dining Room

24' 8" x 12' 10" (7.52m x 3.90m)

Living Room

19' 3" x 10' 4" (5.88m x 3.16m)

Bedroom 1

14' 11" x 10' 6" (4.56m x 3.21m)

En-Suite Shower Room

10' 6" x 3' 10" (3.21m x 1.17m)

Bedroom 2

12' 8" x 11' 2" (3.85m x 3.40m)

Bedroom 3

9' 0" x 6' 2" (2.75m x 1.87m)

Bathroom

7' 8" x 6' 2" (2.33m x 1.88m)

Bedroom 4

11' 9" x 10' 7" (3.57m x 3.23m)

Bedroom 5

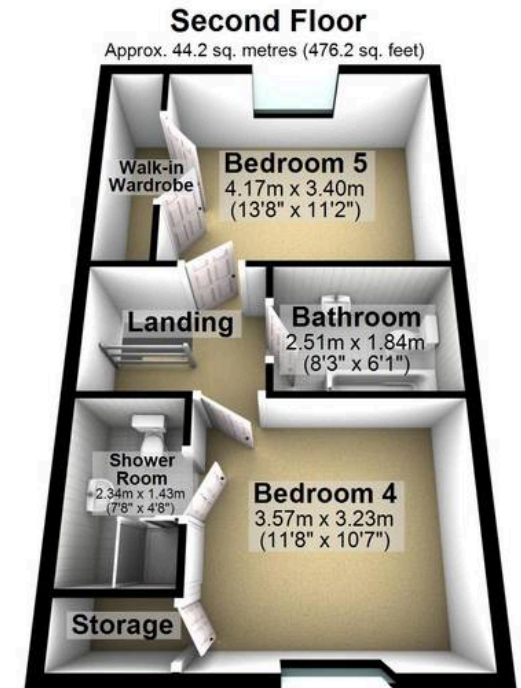
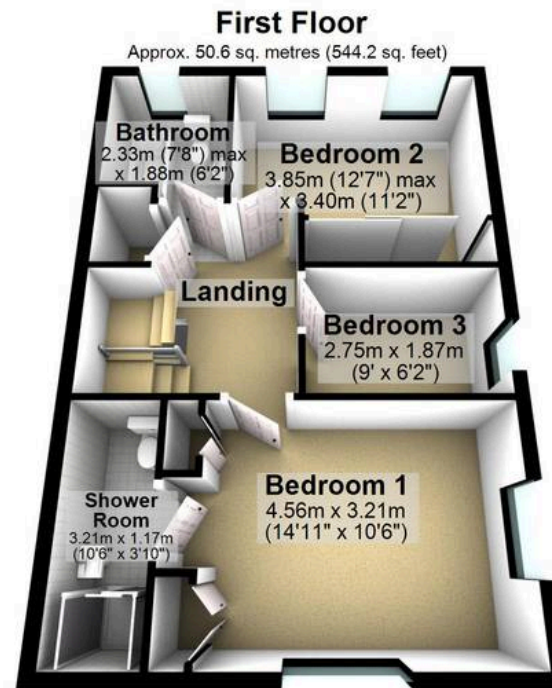
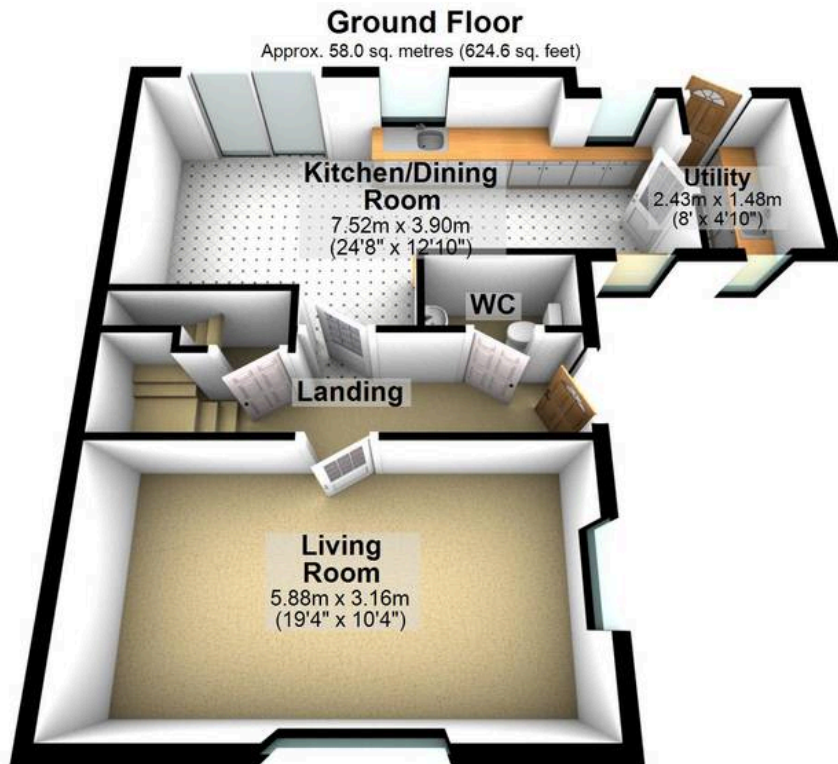
13' 8" x 11' 2" (4.17m x 3.40m)

Bathroom

8' 3" x 6' 0" (2.51m x 1.84m)







Total area: approx. 152.8 sq. metres (1645.0 sq. feet)