



Inverness Terrace, W2

£500 Per week

An immaculately presented one bedroom apartment that benefits from period features and generous living space throughout. The property is perfect for a professional couple or single looking for an easy commute in to Town.

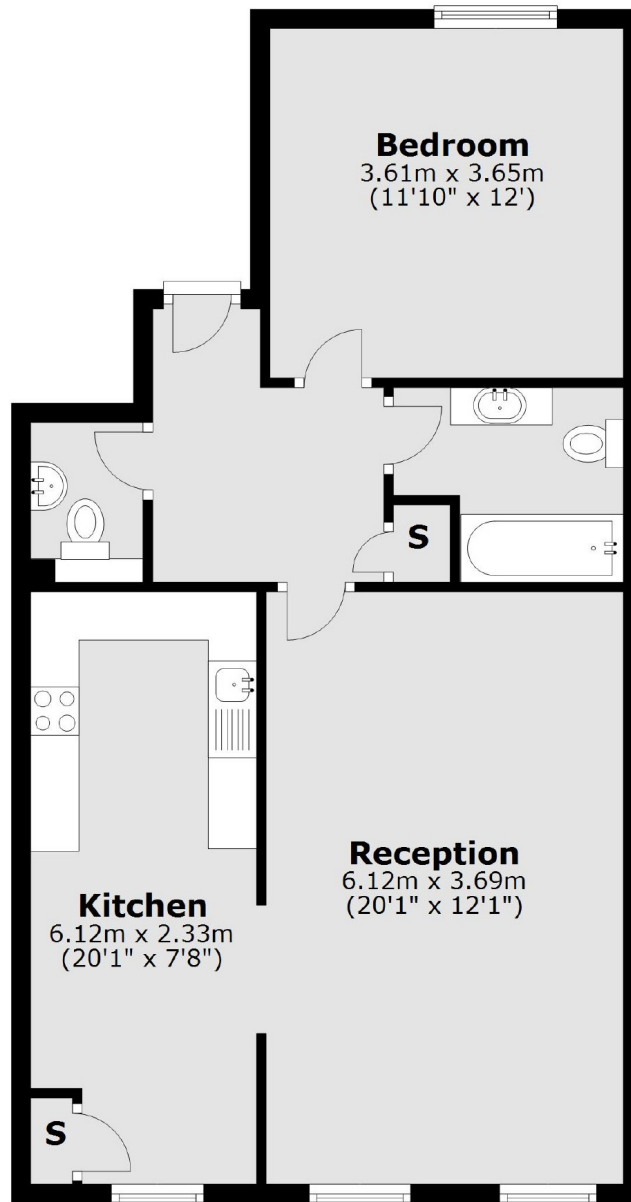
Inverness Terrace provides direct access to the vast green space of Hyde Park as well as a variety of local transport links.

Features

- Newly Refurbished
- Period Features
- Eat In Kitchen
- Third Floor
- Lift Access
- Hyde Park

Inverness Terrace, London, W2

Third Floor



Total area: approx. 64.4 sq. metres (693.6 sq. feet)