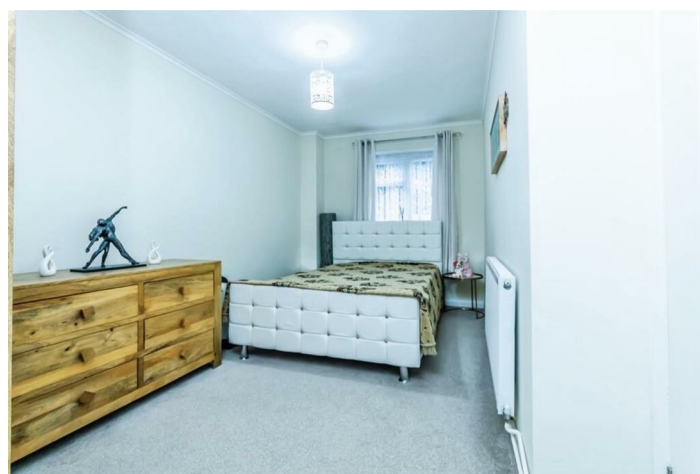


LEASEHOLD



Flat (EPC Rating: C)

2 HARRIER COURT BRISTOL CLOSE, CRAWLEY, RH10 3UH

Price Guide

£260,000



2 Bedroom Flat located in Crawley

Charming two-bedroom maisonette located in the sought-after area of Pound Hill, Crawley. Located within the Harrier Court development, this property offers a generous living space, making it an ideal home for individuals or small families seeking comfort and convenience.

This 1970s-built maisonette boasts a naturally bright and airy atmosphere, thanks to its well-designed layout and large windows that invite ample natural light. The spacious reception room provides an ideal setting for relaxation or entertaining guests.

The property features one well-appointed bathroom. The maisonette's design allows for a seamless flow between the living areas, creating an inviting environment that is both functional and stylish.

Situated in a popular location, the property benefits from easy access to local amenities, schools, and transport links.

This delightful maisonette presents an excellent opportunity for anyone looking to settle in a desirable part of Crawley.

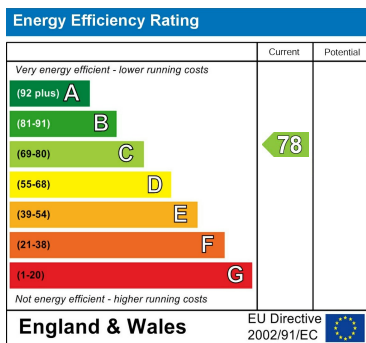


RICHMOND HOUSE - SALES | 105 HIGH STREET, CRAWLEY, WEST SUSSEX, RH10 1DD

Council Tax Band

C

Energy Performance Graph



Call us on

01293529993

info@connectukgroup.co.uk

connectukgroup.co.uk

Agents Note: Whilst every care has been taken to prepare these particulars, they are for guidance purposes only. All measurements are approximate and are for general guidance purposes only and whilst every care has been taken to ensure their accuracy, they should not be relied upon and potential buyers are advised to recheck the measurements.