



Pinhigh Place, Salford

Salford



In Excess of £125,000

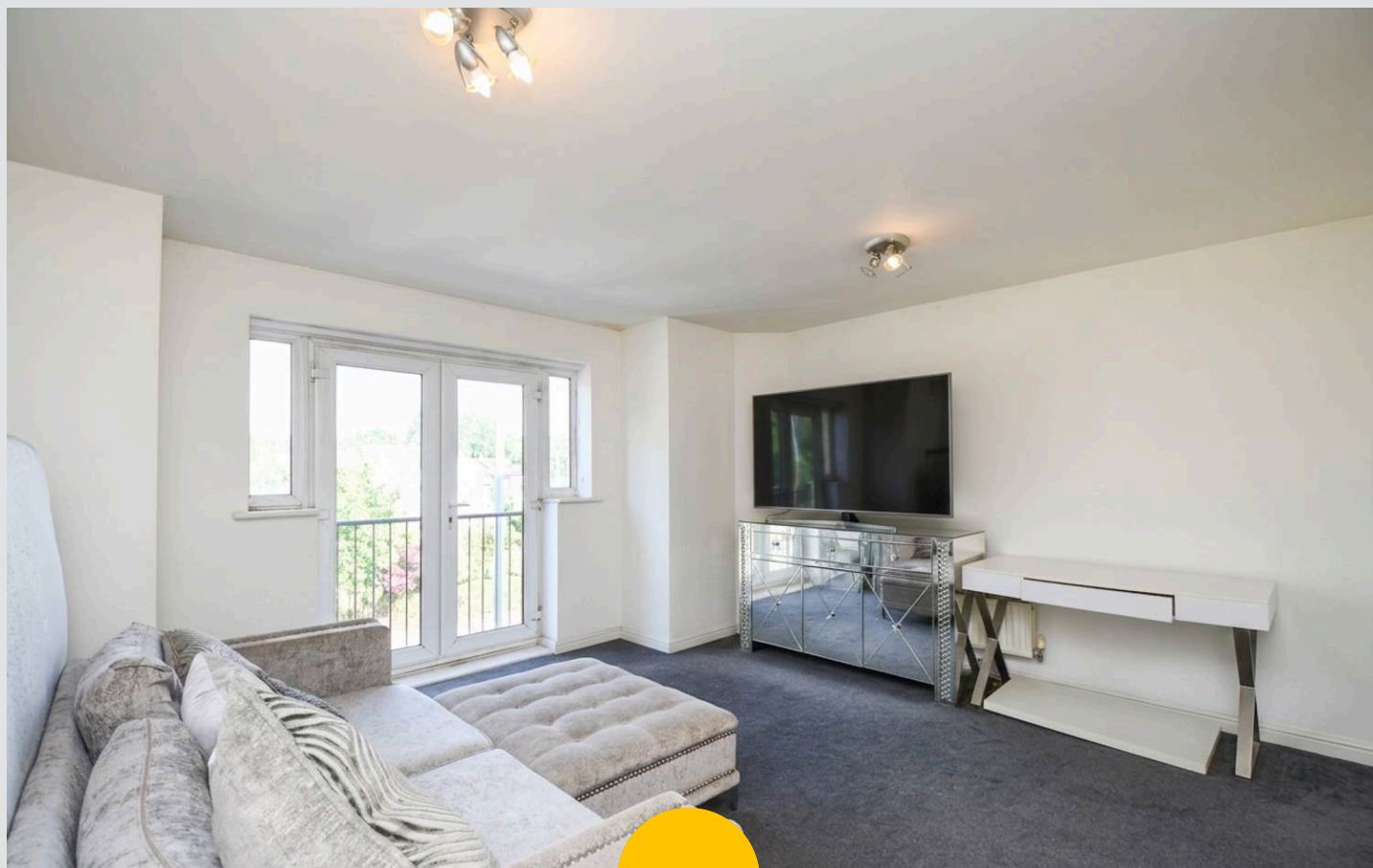
Pinhigh Place

Salford

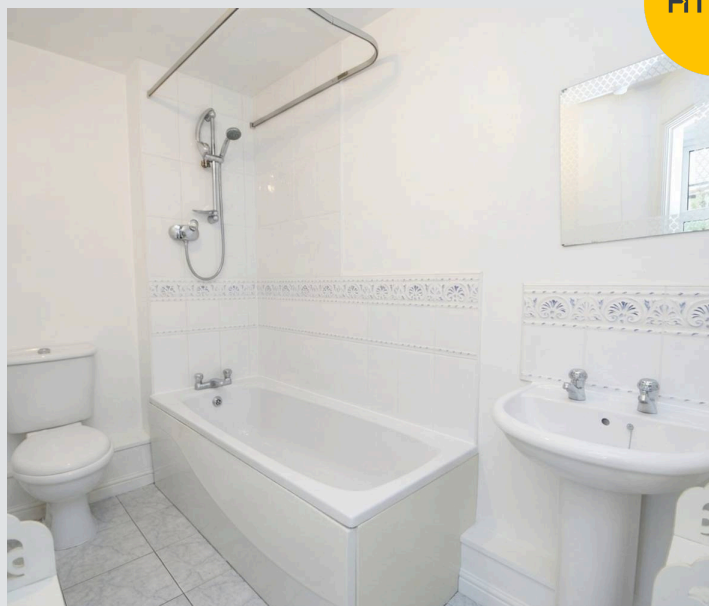
Spacious CHAIN FREE two bedroom apartment situated on the second floor of the popular Pinhigh Place Development! Ideally located within walking distance of Salford Royal Hospital
Council Tax band: A

Tenure: Leasehold

- CHAIN FREE Two Bedroom Apartment with Allocated Gated Parking
- Located on the Popular Pinhigh Place Development
- Located close to East Lancashire Road, motorway links (M602) & Salford Royal Hospital
- Two Double Bedrooms, with the main bedroom benefitting from a Juliette balcony
- Spacious lounge complete with a Juliette balcony
- Three-piece bathroom suite and fitted kitchen
- Gas Central Heated & Double Glazed Throughout
- Early Viewing Essential
- Perfect first time buy!



HILLS



Entrance

18' 10" x 9' 6" (5.73m x 2.90m)

Bedroom 1

8' 4" x 14' 6" (2.53m x 4.41m)

Bedroom 2

8' 10" x 11' 9" (2.70m x 3.57m)

Lounge

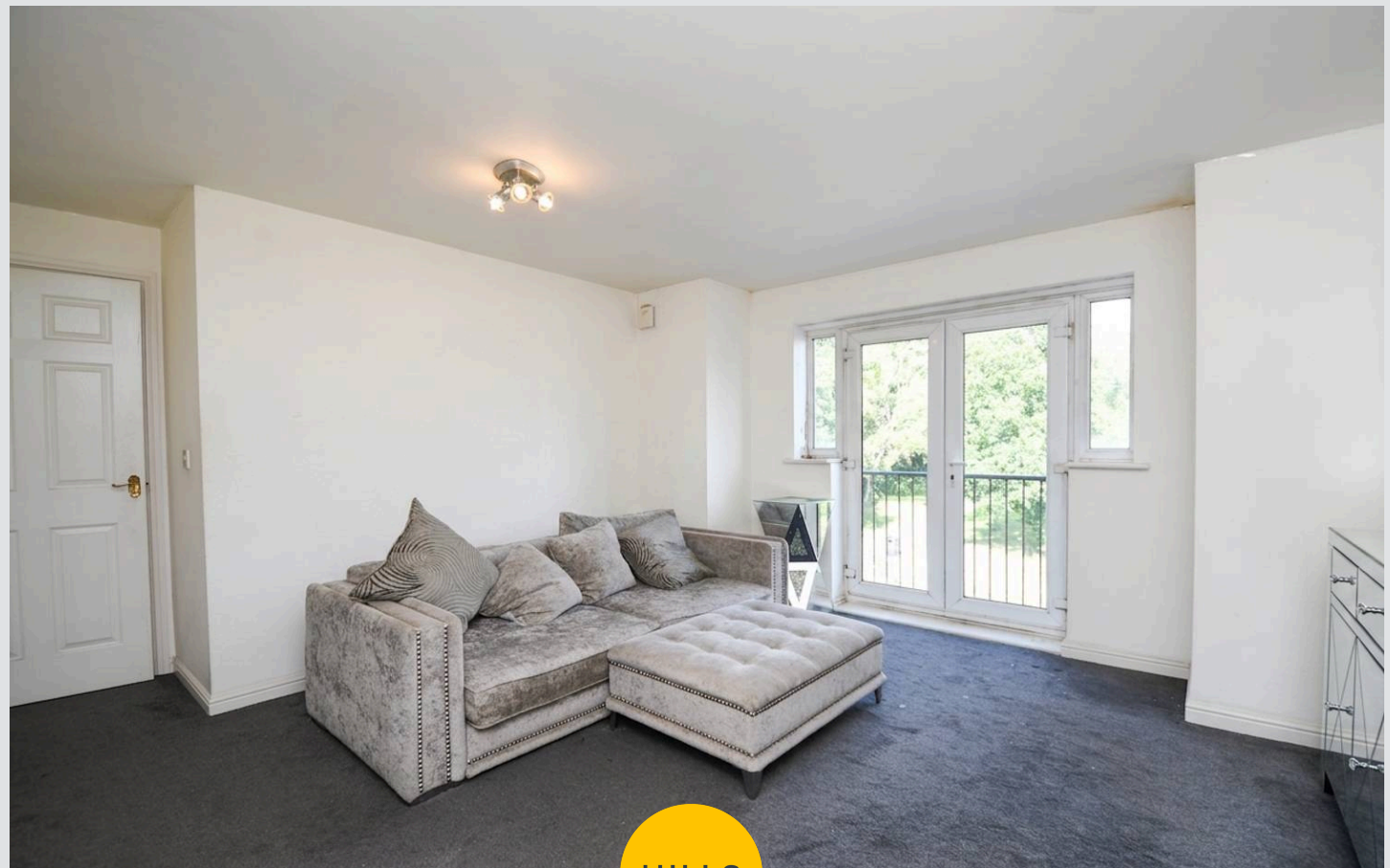
17' 5" x 14' 7" (5.30m x 4.44m)

Kitchen

5' 10" x 12' 9" (1.79m x 3.88m)

Bathroom

9' 5" x 5' 2" (2.86m x 1.57m)

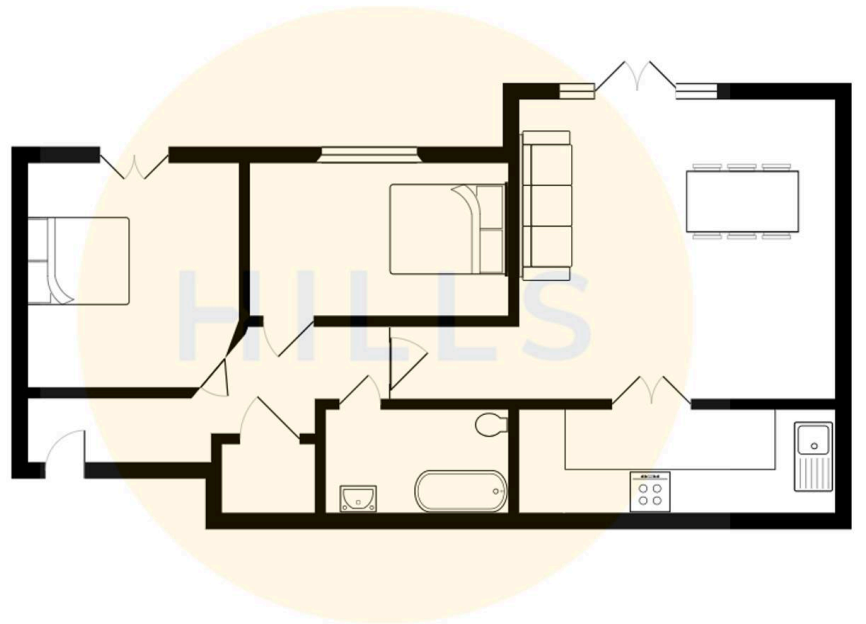


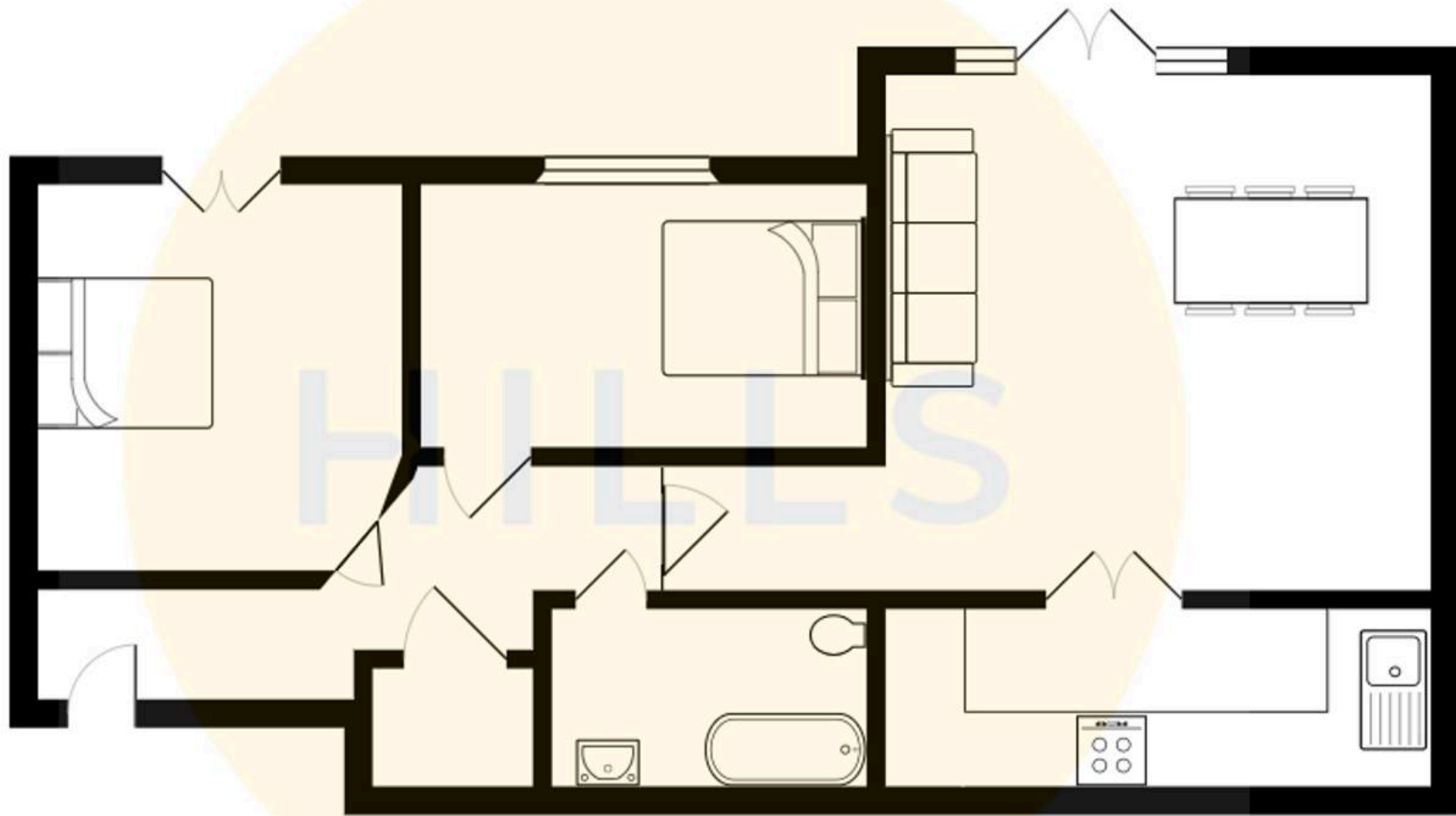
HILLS





HILLS







Hills | Salfords Estate Agent

Hills Residential, Sentinel House Albert Street – M30 0SS

0161 707 4900

sales@hills.agency

www.hills.agency/



By law, we are required to conduct anti-money laundering checks on all potential buyers and sellers. In line with HMRC guidelines, our trusted partner, Coadjute, will securely manage these checks on our behalf. A non-refundable fee of £45 + VAT per person will apply, and Coadjute will handle the payment. Once an offer is accepted, Coadjute will send a secure link for you to complete the biometric checks. These checks must be completed before we can send the memorandum of sale to all parties. PLEASE NOTE: The Agent has not tested any equipment, fixtures, fittings or services so cannot verify that they are in working order or fit for the purpose. References to the properties tenure are based on information supplied by the seller. You are advised to check the availability of this property before travelling any distance to view. Every effort has been made to ensure these particulars are correct and not misleading but their accuracy is not guaranteed nor do they form part of any contract.