



St. Margarets Close, Horstead, Norwich, NR12 7ER

welcome to

St. Margarets Close, Horstead Norwich

This THREE BEDROOM End Terrace House combines generous family-sized living with a sought-after location, perfectly merging the charm of village life with contemporary comforts. It's a must-visit for anyone seeking a peaceful yet convenient lifestyle.



Lounge

14' 5" x 12' (4.39m x 3.66m)

Lounge leads from entrance hallway, bay window to front aspect, electric fireplace, radiator, laminate flooring.

Kitchen

19' 2" x 8' 11" (5.84m x 2.72m)

Double glazed window to rear aspect, wall and base units with work surface, tiled splashback, 1.5 bowl sink, electric hob and oven, space for washing machine and dishwasher.

Hall

Double glazed window to rear aspect, door to garden, tiled flooring, boarded up area which is access to loft.

Separate Toilet

Toilet, wash hand basin, heated towel rail.

Bedroom One

11' 11" x 10' (3.63m x 3.05m)

New double glazed window to front aspect, carpeted flooring, radiator.

Bedroom Two

12' 2" x 8' 11" (3.71m x 2.72m)

New double glazed window to rear aspect, radiator, carpeted flooring.

Bedroom Three

8' 10" x 8' 8" (2.69m x 2.64m)

Double glazed window to front aspect, radiator, carpeted flooring.

Cupboard

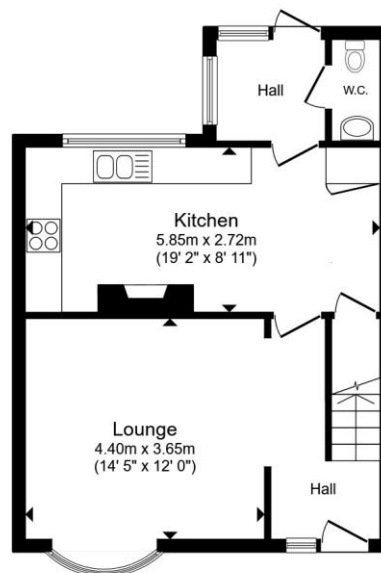
Cupboard on landing

Bathroom

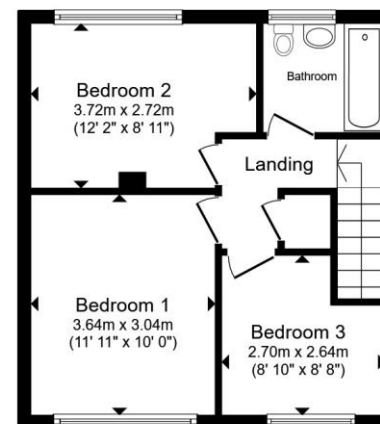
Double glazed window to rear aspect, tiled walls, wash hand basin with mixer tap, bath with shower overhead, toilet, radiator.

Exterior

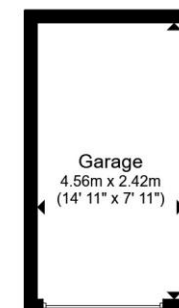
Front and rear fully enclosed gardens.



Ground Floor



First Floor



Garage

Total floor area 92.0 m² (990 sq.ft.) approx

This floor plan is for illustrative purposes only. It is not drawn to scale. Any measurements, floor areas (including any total floor area), openings and orientation are approximate. No details are guaranteed, they cannot be relied upon for any purpose and they do not form part of any agreement. No liability is taken for any error, omission or misstatement. A party must rely upon its own inspection(s). Powered by www.propertybox.io


william
h brown



view this property online williamhbrown.co.uk/Property/NOR141043



welcome to

St. Margarets Close, Horstead Norwich

- Two charming, fully enclosed gardens with side access gates
- Three spacious bedrooms
- Modern, well-presented living areas
- Great local amenities and transport links
- Scenic Horstead Mill and the River Bure are just a short distance away

Tenure: Freehold EPC Rating: Awaited

Council Tax Band: B

£250,000



Please note the marker reflects the postcode not the actual property

view this property online williamhbrown.co.uk/Property/NOR141043



Property Ref:
NOR141043 - 0004

1. MONEY LAUNDERING REGULATIONS Intending purchasers will be asked to produce identification documentation at a later stage and we would ask for your co-operation in order that there is no delay in agreeing the sale. 2. These particulars do not constitute part or all of an offer or contract. 3. The measurements indicated are supplied for guidance only and as such must be considered incorrect. Potential buyers are advised to recheck measurements before committing to any expense. 4. We have not tested any apparatus, equipment, fixtures or services and it is in the buyers interest to check the working condition of any appliances. 5. Where an EPC, or a Home Report (Scotland only) is held for this property, it is available for inspection at the branch by appointment. If you require a printed version of a Home Report, you will need to pay a reasonable production charge reflecting printing and other costs. 6. We are not able to offer an opinion either written or verbal on the content of these reports and this must be obtained from your legal representative. 7. Whilst we take care in preparing these reports, a buyer should ensure that his/her legal representative confirms as soon as possible all matters relating to title including the extent and boundaries of the property and other important matters before exchange of contracts.

William H Brown is a trading name of Sequence (UK) Limited which is registered in England and Wales under company number 4268443, Registered Office is Cumbria House, 16-20 Hockliffe Street, Leighton Buzzard, Bedfordshire, LU7 1GN. VAT Registration Number is 500 2481 05.



william h brown



01603 760044



norwich@williamhbrown.co.uk



5 Bank Plain, NORWICH, Norfolk, NR2 4SF



williamhbrown.co.uk