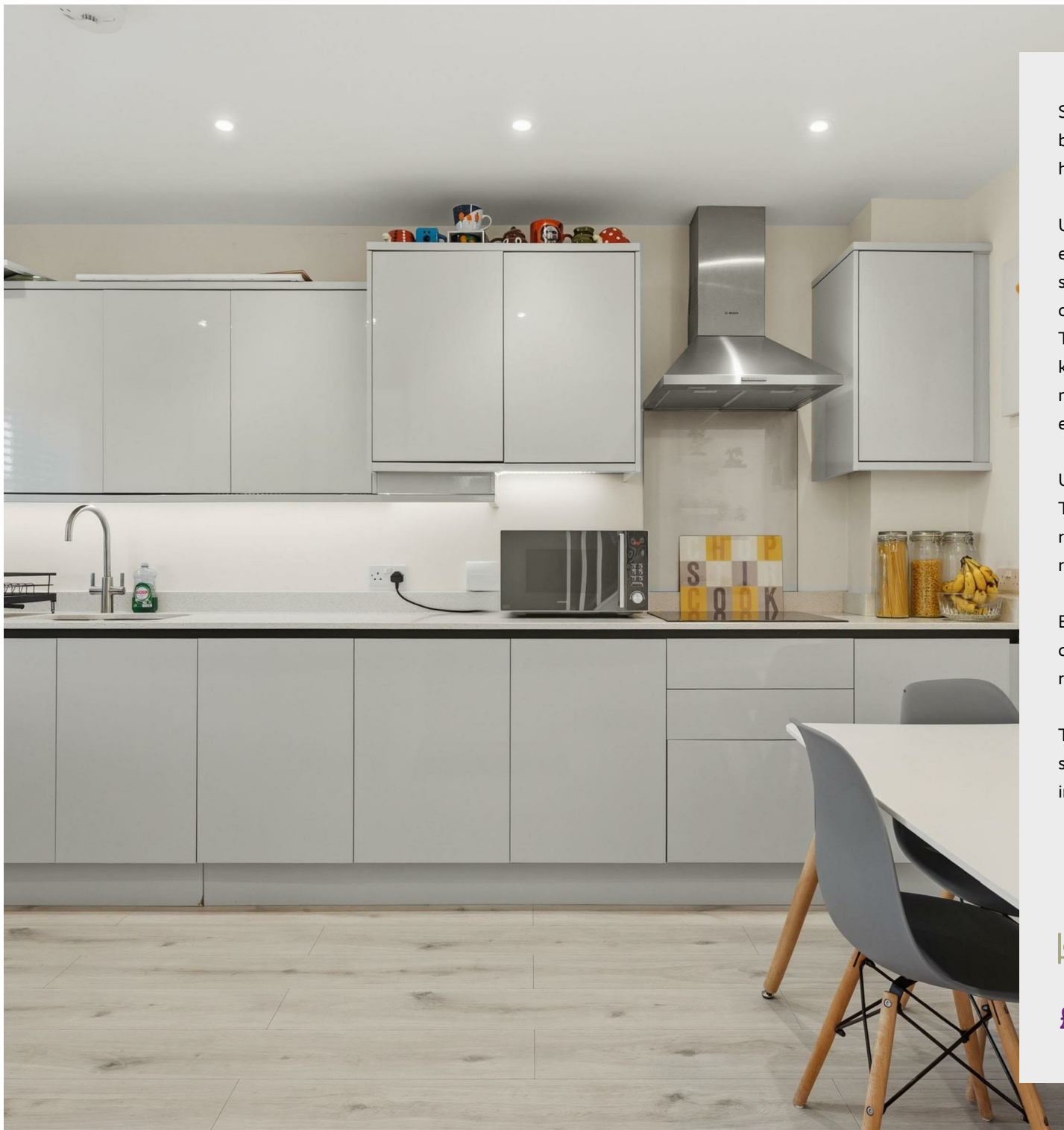




5 Ferndale Close
Wellingborough, NN9 5FW



Simpson & Partners



Situated in a sought-after residential area of Finedon, this beautifully presented modern three-bedroom semi-detached home offers stylish and contemporary living throughout.

Upon entering the property, you are welcomed by a bright entrance hall leading to a convenient downstairs W/C and a spacious living room featuring patio doors that open directly onto the rear garden, creating a seamless indoor-outdoor flow. The heart of the home is the impressive open-plan kitchen/dining area, finished to a high specification with modern fittings and ample space for both cooking and entertaining.

Upstairs, the property offers three well-proportioned bedrooms. The master bedroom benefits from its own en-suite shower room, while a contemporary family bathroom serves the remaining bedrooms.

Externally, the property boasts a good-sized rear garden, complete with a patio area ideal for outdoor dining and relaxation, along with lawn space for family use.

This is an ideal home for families, professionals, or anyone seeking a modern property in a desirable location with excellent internal space and outdoor living potential.

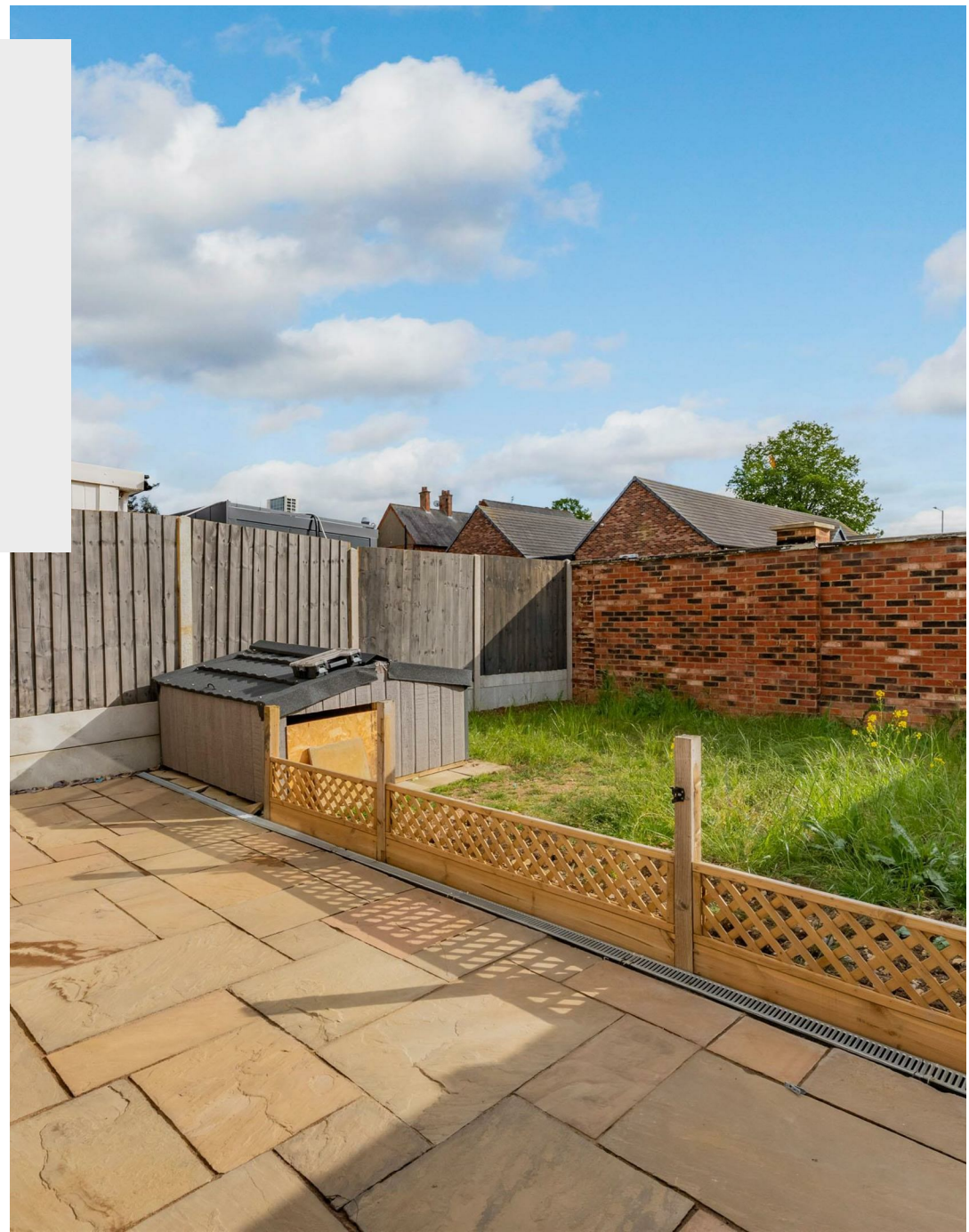
 3

 2

 1

£280,000

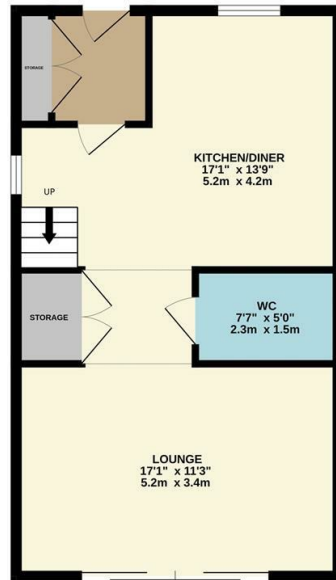




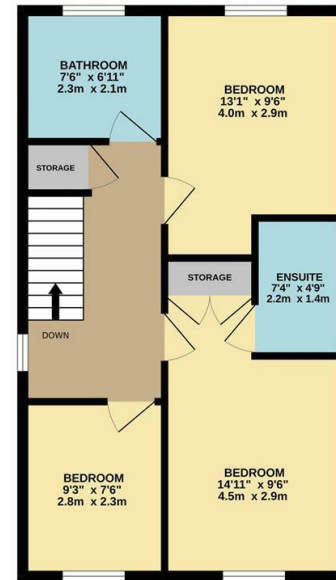




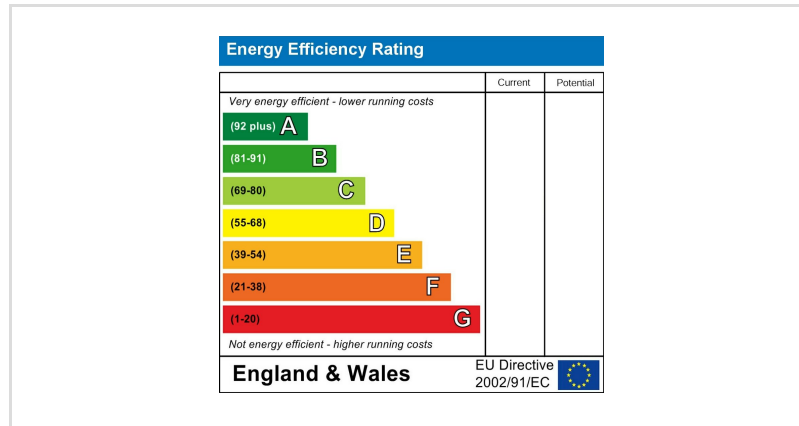
GROUND FLOOR



1ST FLOOR



Whilst every attempt has been made to ensure the accuracy of the floorplan contained here, measurements of doors, windows, rooms and any other items are approximate and no responsibility is taken for any error, omission or mis-statement. This plan is for illustrative purposes only and should be used as such by any prospective purchaser. The services, systems and appliances shown have not been tested and no guarantee as to their operability or efficiency can be given.
Made with Metroplan ©2025



When you buy with Simpson and Partners, you know **you'll be in safe hands**. From the moment you walk through our doors, we'll make you **feel truly welcome**. Our sales consultants and financial advisors will take you through **every step of the process**, offering **free expert advice** along the way, from help choosing the right mortgage and insurance through to finding your conveyancer. And if you need help selling your home too, **with over 20 years of local experience, you can trust us to get you moving**.



**Simpson
& Partners**

Making Every
Journey Personal



01536 518200

kettering@simpsonandpartners.co.uk

<https://www.simpsonandpartners.co.uk/>

1 Silver Street, Kettering, Northants, NN16 0BN