



Woodland Gardens, TW7

£799,950

Dexters



Woodland Gardens, TW7

A rare opportunity to acquire a double fronted detached bungalow, offered to the market with no onward chain and set within a highly desirable residential area. Extending to over 1,300 sq ft, this impressive home boasts three generously sized double bedrooms and occupies a prominent corner plot, providing ample outdoor space to both the front and rear.

Upon arrival, you are welcomed by an inviting entrance leading into a spacious hallway, with two well proportioned bedrooms positioned to either side. A stunning dual aspect reception room runs from front to back, opening out onto a beautifully landscaped and private garden perfect for relaxing or entertaining. At the heart of the home lies an elegant dining room, ideal for hosting guests, while a separate rear kitchen is finished to a high specification and features integrated appliances. The property also benefits from a modern three piece family bathroom, alongside a third double bedroom complete with its own en-suite shower room.

Located within a quiet residential area in a sought after location, Woodland Gardens is within walking distance to Isleworth Overground Station, whilst a vast array of shops and amenities of Isleworth, St Margaret's and Richmond are all within easy reach.

Features

- Detached Bungalow
- Three Bedrooms
- Two Bathrooms
- Driveway for Several Cars
- Secluded Garden
- Scope to Extend (STPP)

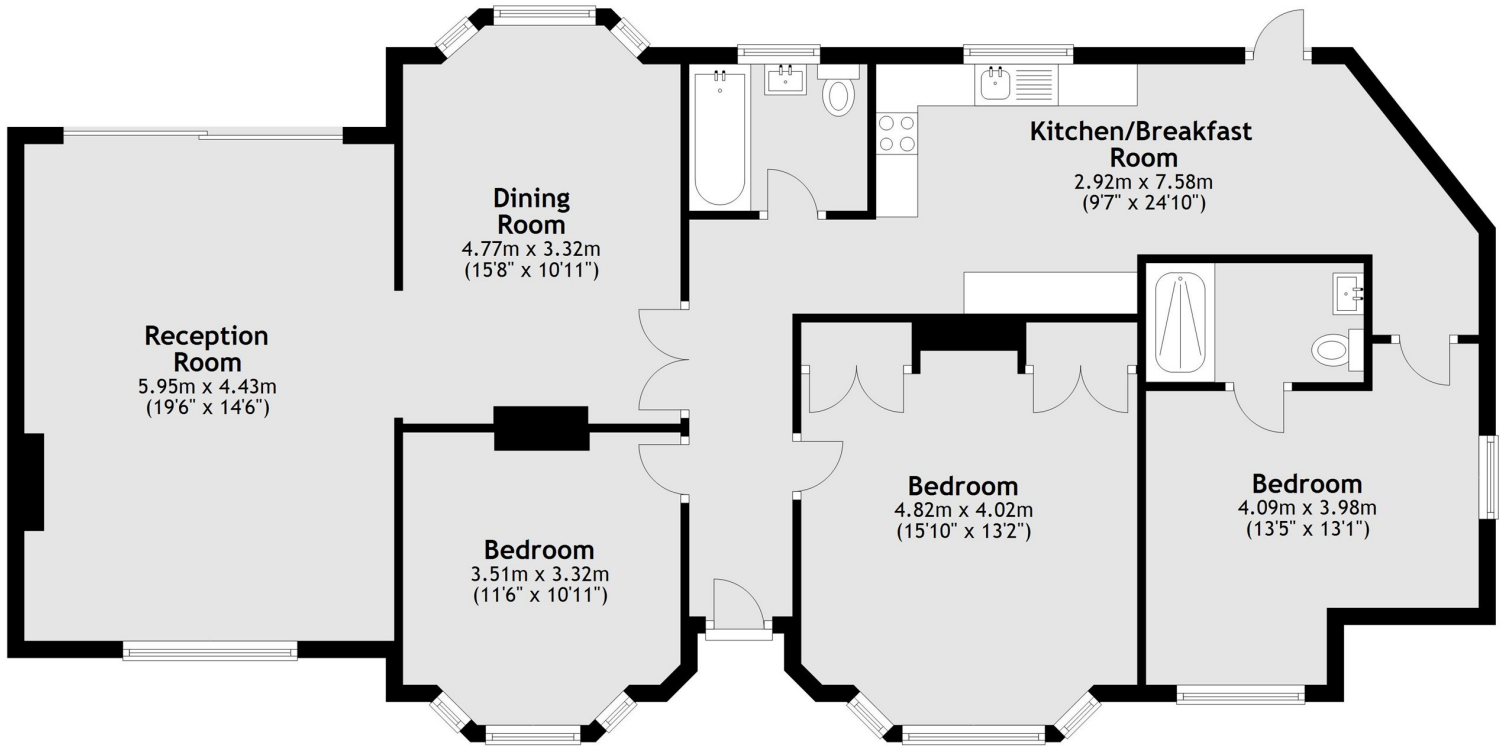






Woodland Gardens, Isleworth, TW7

Ground Floor



Total area: approx. 120.9 sq. metres (1301.6 sq. feet)