



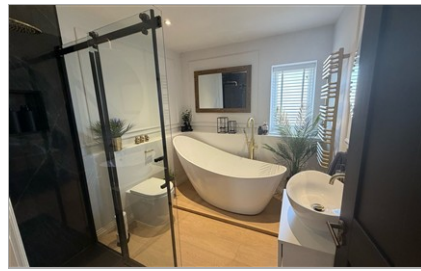
Price
£650,000

Freehold

3x  1x  2x 

**Hereford Gardens,
Birchington, Kent, CT7**

Wards
Helping you move forwards



Main features

- Recently refurbished
- Garage and off road parking with an in and out driveway
- Chain Free
- Within walking distance to Birchington High Street
- Easy access to the A299



Nearest Schools

Primary Schools: Birchington C of E Primary 0.2 miles, St Saviour's C of E Junior School 1.3 miles, Monkton C of E Primary 2.5 miles

Secondary Schools: King Ethelbert School 0.8 miles, Ursuline College 1.1 miles, Hartsdown Technology College 2.8 miles



Transport Information

Train Stations: Birchington-On-Sea 0.2 miles, Westgate-on-Sea 1.6 miles, Minster 3.0 miles

Accommodation

Call Birchington - 01843 842551 ■ wardsofkennt.co.uk

■ If buying to rent, please check if Local Authority licensing schemes apply before proceeding



10130140/20260519/LT/ER