




## Kergilliack Close, Falmouth

Guide Price £330,000

 3  2  2

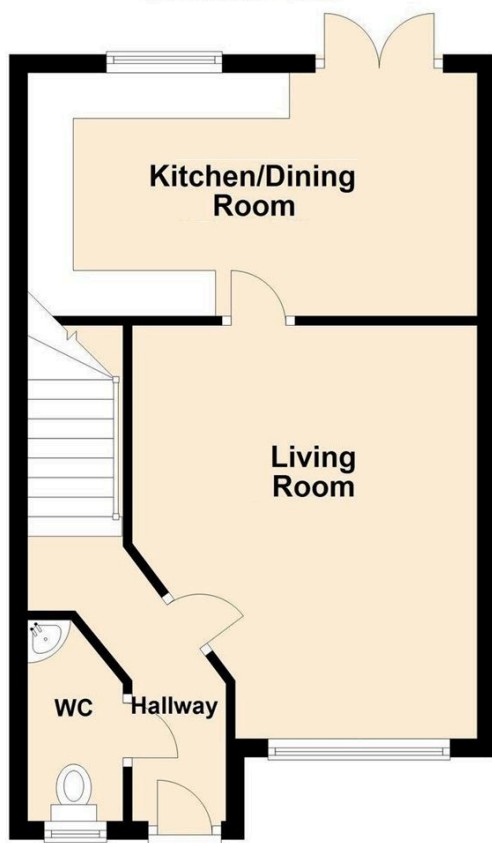


Attractive, stone fronted, 3 bedroom end of terrace family home, situated in an elevated position enjoying an open aspect within the Eve Parc development built by Persimmon Homes. An early appointment to view is highly recommended.

## Key Features

- END OF TERRACE FAMILY HOME
- THREE BEDROOM ACCOMMODATION
- MASTER WITH ENSUITE SHOWER ROOM
- LOUNGE
- FITTED KITCHEN/DINING ROOM
- FAMILY BATHROOM/WC
- FRONT AND REAR GARDEN WITH TERRACE AND SUMMERHOUSE
- OFF ROAD PARKING
- POPULAR RESIDENTIAL LOCATION
- Ref: 1391508AP

**Ground Floor**



**First Floor**

