



30 Windrush Way, Hythe

In Excess of **£350,000**



ANTHONY JAMES
PROPERTIES



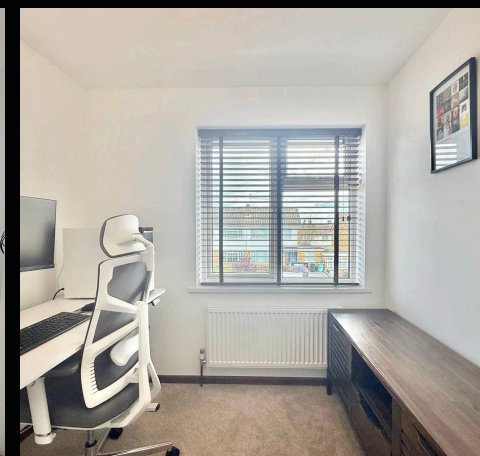
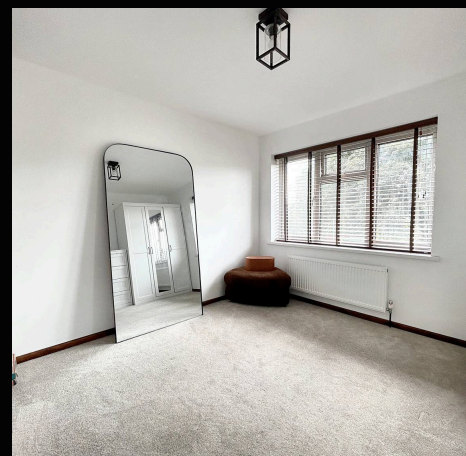
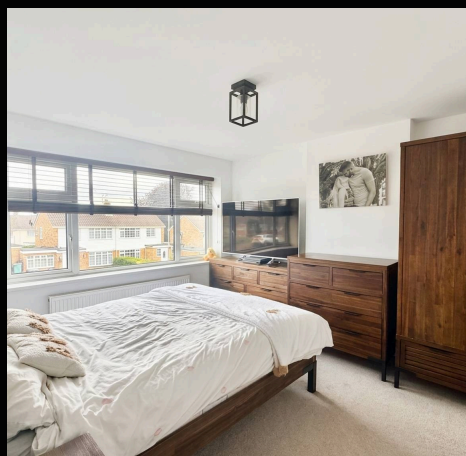
30 Windrush Way

Hythe, Southampton

This well-presented semi-detached house offers generous accommodation throughout. Internally, the property comprises three bedrooms, a spacious lounge/dining room, a rear-aspect kitchen, and a modern shower room. Externally, the property benefits from an extensive rear garden, driveway parking to the front, and an attached garage. Additional features include a recently replaced combi boiler and a new roof. An internal viewing is strongly recommended to fully appreciate the accommodation on offer.

Council Tax band: C

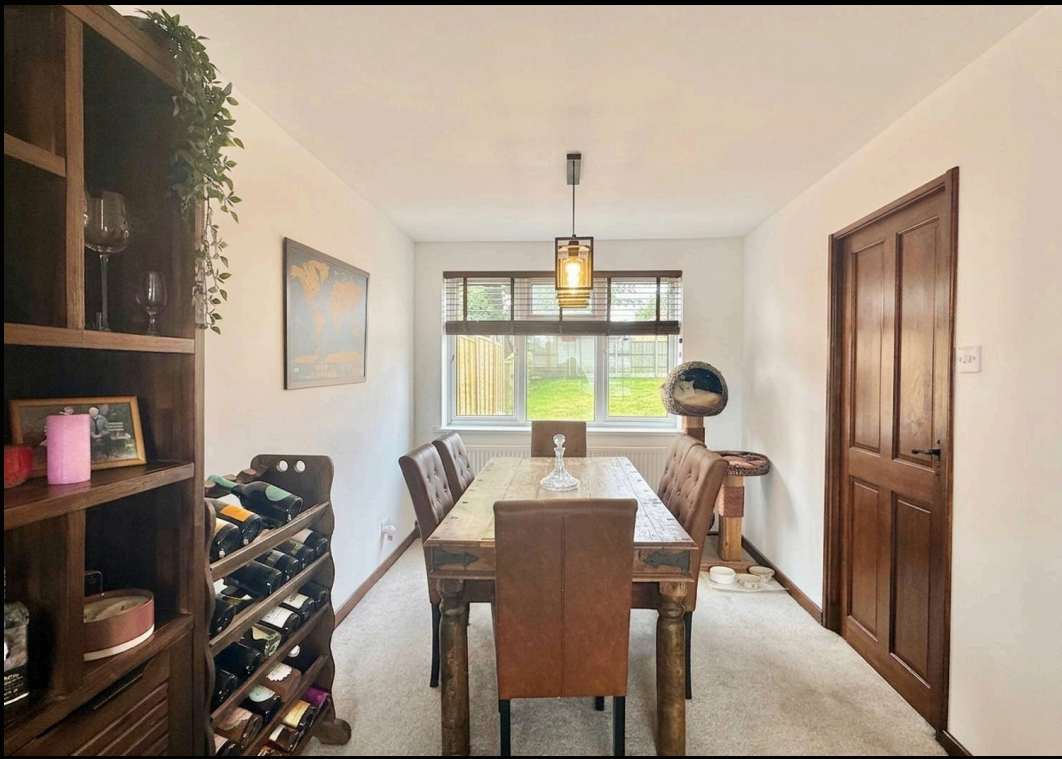
Tenure: Freehold

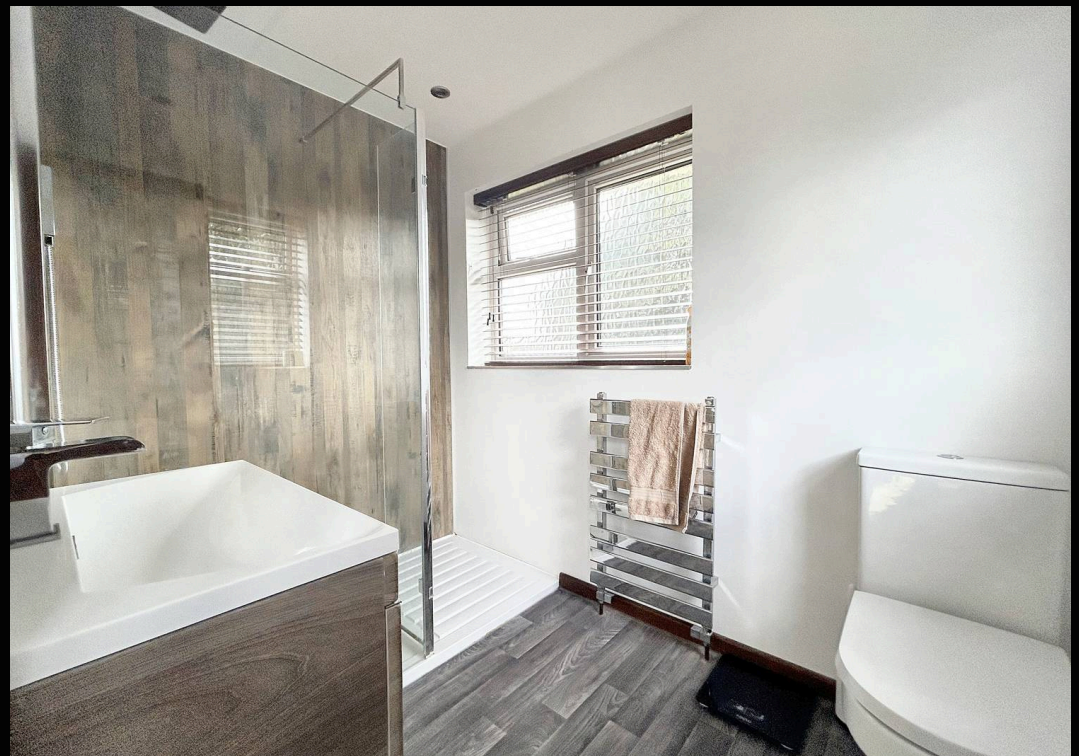


1 Southward House
Dibden Purllieu SO45 4PT

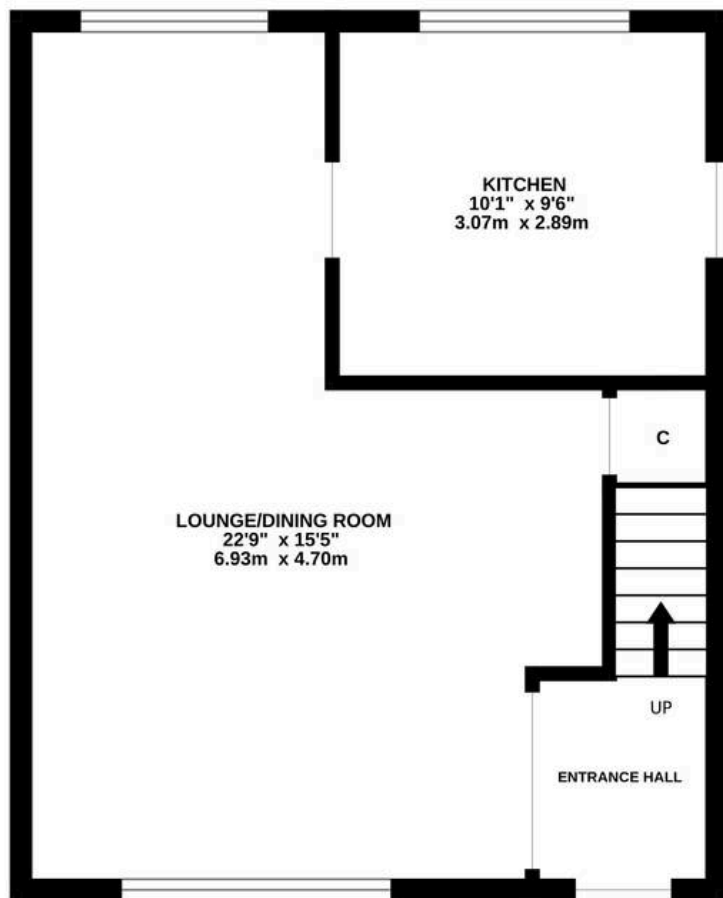


T: 02380 844405
info@anthonyjamesproperties.co.uk

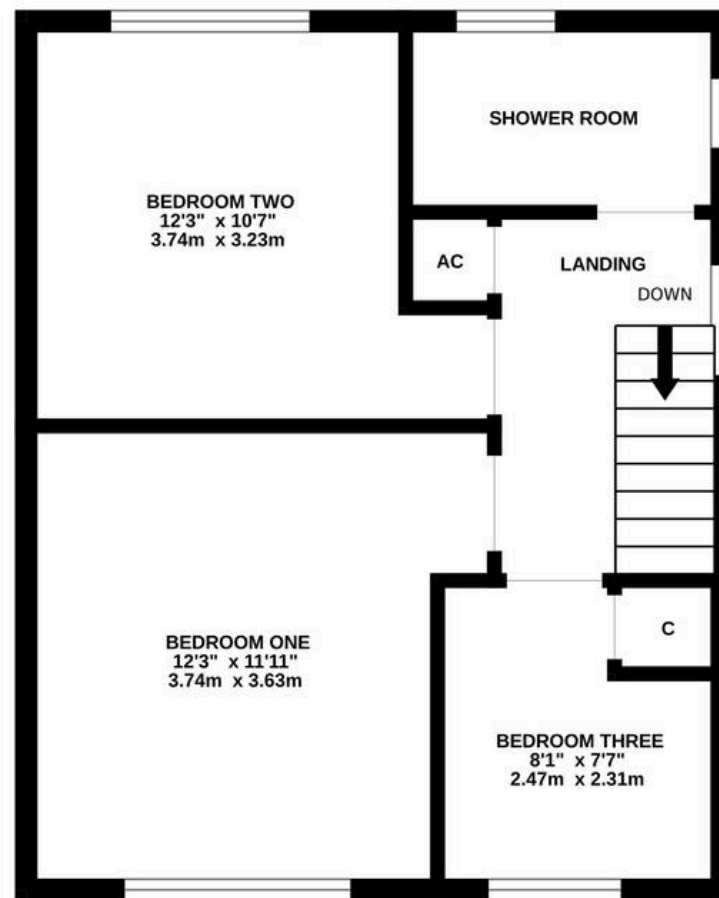




GROUND FLOOR
414 sq.ft. (38.5 sq.m.) approx.



1ST FLOOR
414 sq.ft. (38.5 sq.m.) approx.



TOTAL FLOOR AREA : 828 sq.ft. (76.9 sq.m.) approx.

Whilst every attempt has been made to ensure the accuracy of the floorplan contained here, measurements of doors, windows, rooms and any other items are approximate and no responsibility is taken for any error, omission or mis-statement. This plan is for illustrative purposes only and should be used as such by any prospective purchaser. The services, systems and appliances shown have not been tested and no guarantee as to their operability or efficiency can be given.

Made with Metropix ©2024