



Rupert Court, Chinatown, Soho, W1D

£550 pw

> 1 Bedroom > 1 Bathroom > Unfurnished

TAVISTOCKBOW
RESIDENTIAL



- › One bedroom
- › One shower room
- › Third floor (no lift)
- › Recently refurbished
- › Wooden flooring throughout
- › Unfurnished
- › Neff appliances
- › Wine fridge
- › Available mid- November
- › Close to Piccadilly Circus and Leicester Square underground stations

Located in the heart of Chinatown this recently refurbished one bedroom flat is situated on the 3rd floor. Featuring an open plan kitchen, the reception room is perfect for entertaining. There is a large double bedroom and a white suite shower room features a rainfall shower. Available mid November, unfurnished.





WHAT WE LOVE:

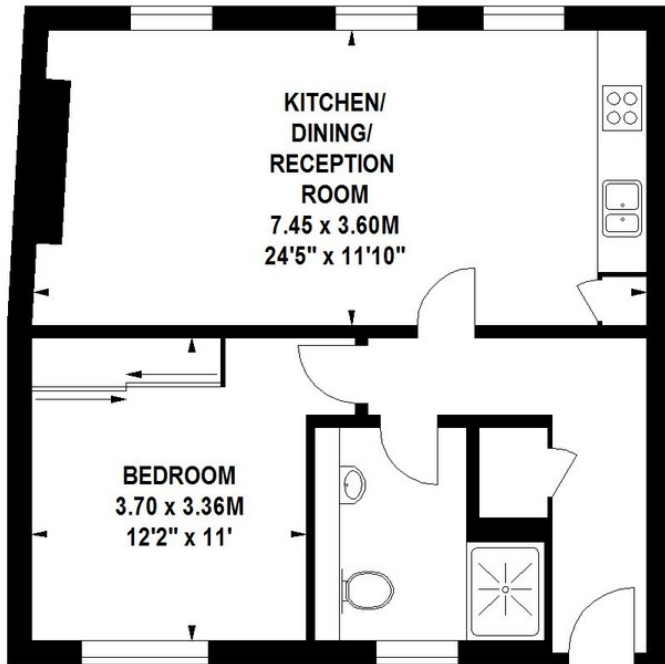
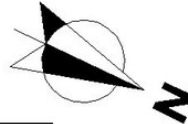
Wine fridge
Great storage
Amazing restaurants close by
Brand new refurbishment
High specification.

WHAT YOU NEED TO KNOW:

Third floor
No lift
Wooden flooring throughout
Westminster council tax
Triple glazing in the bedroom.

Rupert Court, W1

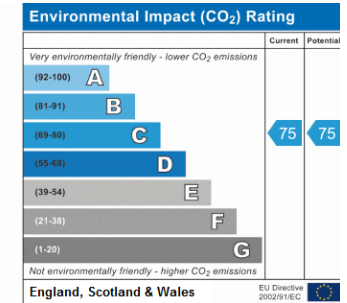
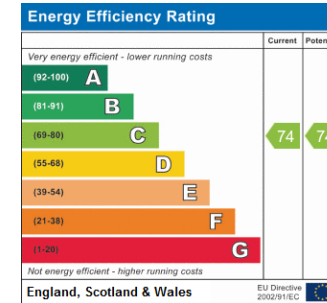
Approximate Gross Internal Area 56 sq m / 603 sq ft



Third Floor

Floor Plan produced for Tavistock Bow by Mays Floorplans © . Tel 020 3397 4594
 Illustration for identification purposes only, not to scale
 All measurements are maximum, and include wardrobes and window bays where applicable

EPC



About Us

Tavistock Bow is an independent residential agency based in Covent Garden. We are niche, boutique, creative, knowledgeable, professional and approachable. We love what we do and that's why we do it.

Contact Us

- a.** 31 Long Acre, London, WC2E 9LA
- t.** 020 7477 2177
- e.** hello@tavistockbow.com
- w.** tavistockbow.com

