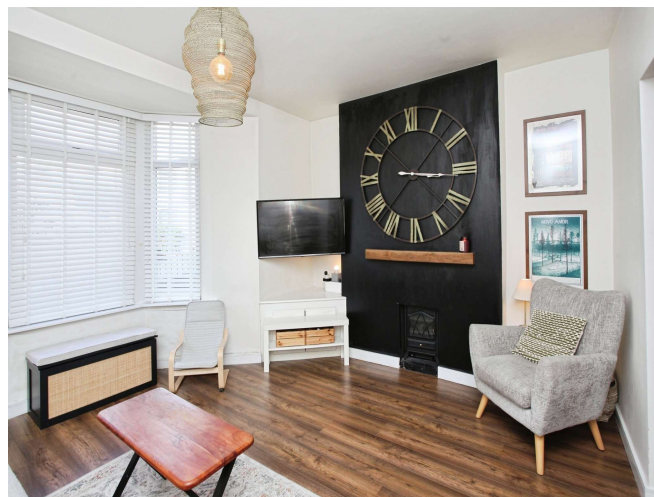


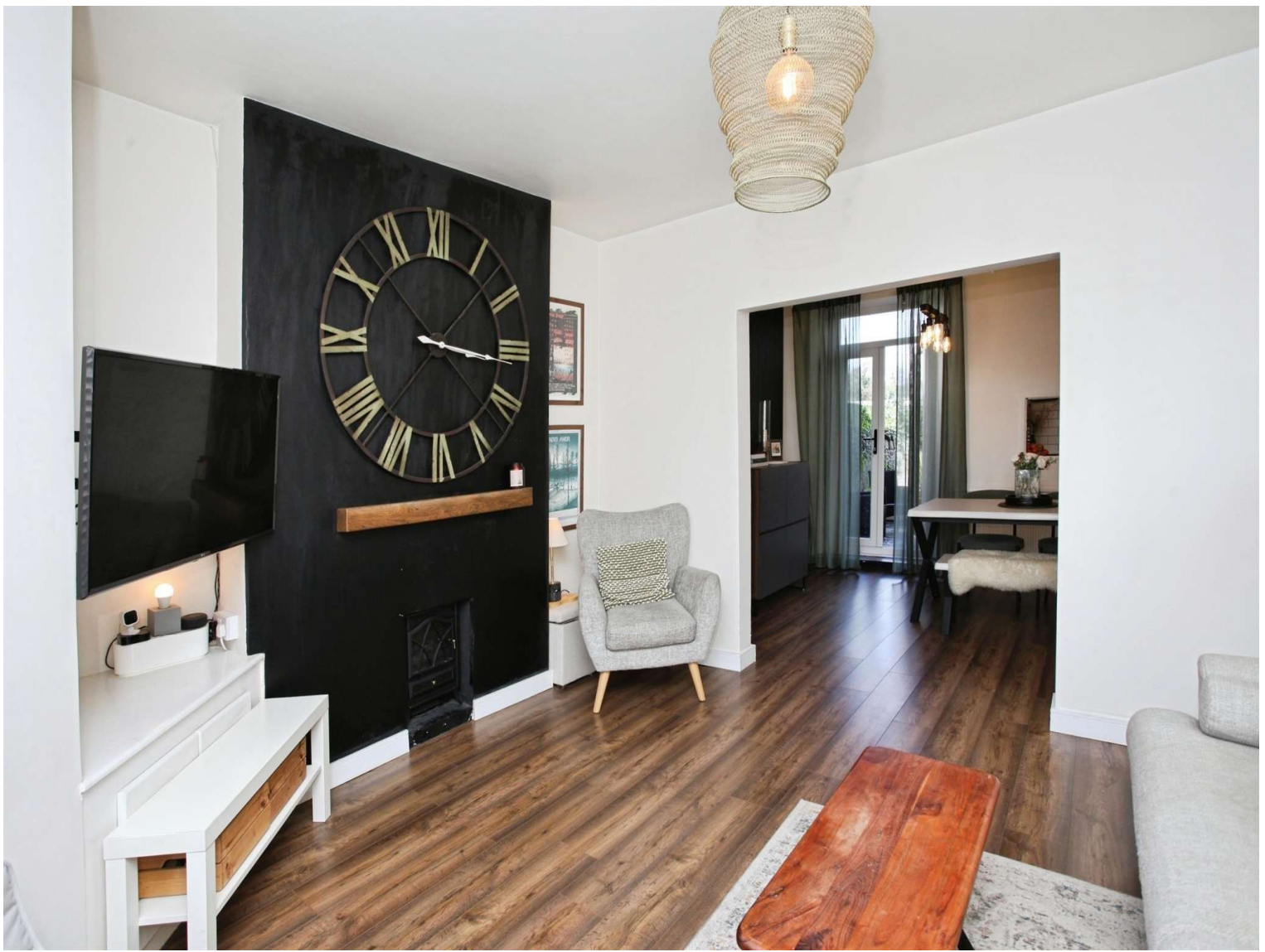


## Central Houses, £215,000

- Three Bedrooms
- Beautiful Terrace Home
- Great, convenient village location
- Close to amenities
- Great road networks and transport links
- Garden Room
- Two Reception Rooms
- Bathroom and WC
- EPC Rating: D



 3  1  2



## About the property

We are delighted to present this immaculate three-bedroom terraced house, ideally situated at Central Houses, Trethomas, Caerphilly. This beautifully maintained property is perfect for both first-time buyers and families seeking a comfortable home in a sought-after location.

Boasting two spacious reception rooms, the property offers flexible living and entertaining spaces, ideal for family gatherings or hosting guests. The well-appointed kitchen ensures convenience for home chefs with ample space for meal preparation and storage. Accommodating three generously sized bedrooms, the home provides comfortable accommodation for the whole family.

The pristine bathroom is fitted to a high standard, contributing to the overall immaculate presentation throughout the house and a convenient upstairs WC. The property benefits further from a charming garden, perfect for outdoor relaxation or play. Additionally, a high-quality garden room and storage area offer versatile space, ideal for a home office, studio, or hobby room.

Located close to excellent public transport links, residents benefit from easy commutes to nearby towns and cities. The property is situated within close proximity to local schools, offering convenient educational options for children. With a wealth of local amenities nearby, day-to-day essentials are within easy reach. Walking routes in the surrounding area provide an attractive aspect for those who enjoy outdoor activities.



## Accommodation

### Ground Floor

#### Hallway

#### Living Room

13' 8" Max x 9' 8" plus bay ( 4.17m Max x 2.95m plus bay )

#### Dining Room

10' 8" x 10' 2" ( 3.25m x 3.10m )

#### Kitchen

11' 2" x 10' 5" ( 3.40m x 3.17m )

#### Bathroom

### First Floor

#### Landing

#### Bedroom One

16' 7" Max x 9' 8" Max ( 5.05m Max x 2.95m Max )

#### Bedroom Two

11' 2" Max x 10' 5" Max ( 3.40m Max x 3.17m Max )

#### Bedroom Three

10' 8" Max x 10' 2" Max ( 3.25m Max x 3.10m Max )

#### Wc

#### Outside

#### Front Courtyard

#### Rear Garden

#### Garden Room

12' 8" x 11' 2" ( 3.86m x 3.40m )

#### Garage Storage Area

11' 2" x 1' 4" ( 3.40m x 0.41m )

#### Summary

This exceptional property combines immaculate condition, versatile living spaces, prime location and unique outdoor features, making it an outstanding opportunity for first-time buyers and families alike. Arrange a viewing today to explore all this impressive home has to offer.

02920 867611

caerphilly@peteralan.co.uk

## Floorplan



This floor plan is for illustrative purposes only. It is not drawn to scale. Any measurements, floor areas (including any total floor area), openings and orientation are approximate. No details are guaranteed, they cannot be relied upon for any purpose and they do not form part of any agreement. No liability is taken for any error, omission or misstatement. A party must rely upon its own inspection(s). Powered by [www.focalagent.com](http://www.focalagent.com)

## Important Information

Note while we endeavour to make our sales details accurate and reliable, if there is any point which is of particular interest to you, please contact the office and we will be pleased to confirm the position for you. We have not personally tested any apparatus, equipment, fixtures, fittings or services and cannot verify they are in working order or fit for their purposes. Nothing in these particulars is intended to indicate that carpets or curtains, furnishings or fittings, electrical goods (whether wired or not). Gas fires or light fittings or any other fixtures not expressly included form part of the property offered for sale. This computer generated Floorplan, if applicable, is intended as a general guide to the layout and design of the property. It is not to scale and should not be relied upon for dimensions. Tenure: We cannot confirm the tenure of the property as we have not had access to the legal documents. The buyer is advised to obtain verification from their solicitor or surveyor.

Peter Alan Limited is registered in England and Wales under company number 2073153, Registered Office is Cumbria House, 16-20 Hockliffe Street, Leighton Buzzard, Bedfordshire, LU7 1GN. VAT Registration Number is 500 2481 05. For activities relating to regulated mortgages and non-investment insurance contracts, Peter Alan Limited is an appointed representative of Connells Limited which is authorised and regulated by the Financial Conduct Authority. Connells Limited's Financial Services Register number is 302221. Most buy-to-let

