



## SANTLEY STREET, SW4

£1,850 PCM

- Victorian conversion
- Good decorative order
- Top floor flat
- Open plan reception
- Furnished
- Energy rating: D





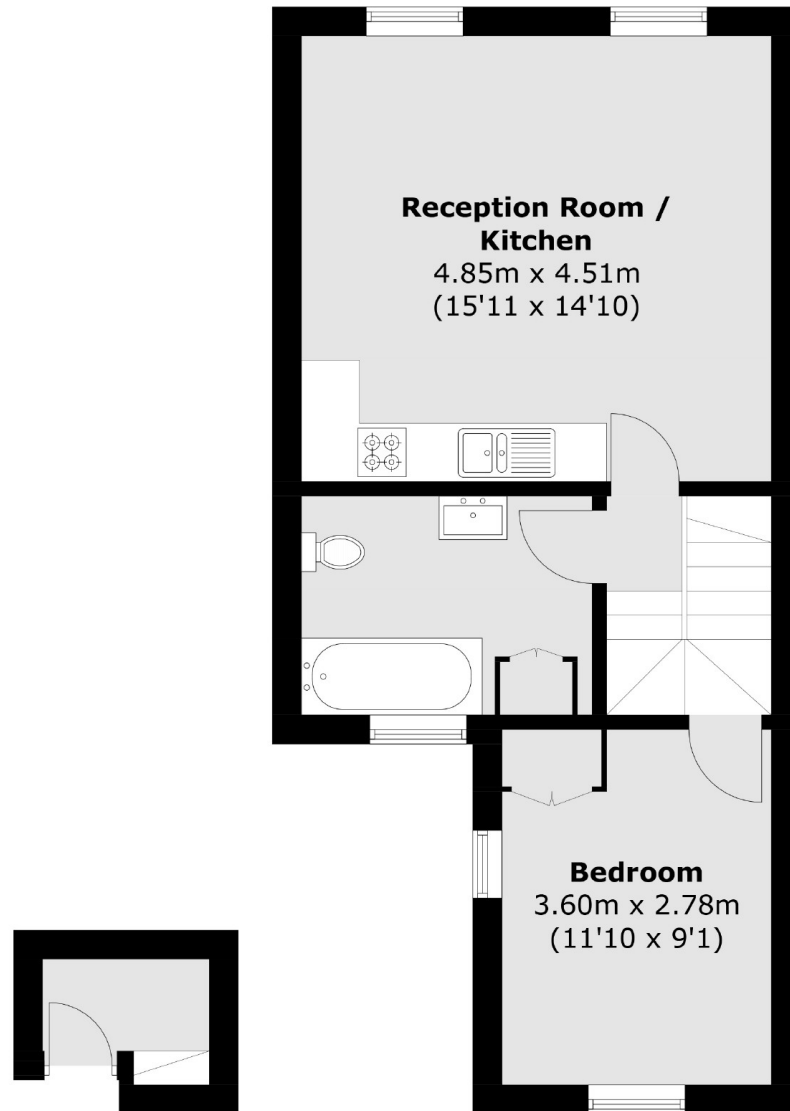
## ABOUT THE HOME

A one bedroom flat ideally located close to Brixton and Clapham North tube comprising open plan kitchen-reception, one double bedroom and modern bathroom.

Santley Street is a popular residential road. Residents have easy access to a wealth of amenities including a range of shops, bars and restaurants from Clapham High Street, Old Town & Brixton Market as well as a number of commercial supermarkets.





**First Floor****Second Floor**

Total area (approx.): 46.6 sq. m (501.6 sq. ft)

**JACKSONS CLAPHAM**

73 Abbeville Road, London,  
SW4 9JN  
Sales: 020 8487 3177  
Lettings: 020 8487 3178

Energy Rating: We aim to make our particulars both accurate and reliable. However they are not guaranteed; nor do they form part of an offer or contract. If you require clarification on any points then please contact us, especially if you're traveling some distance to view. Please note that appliances and heating systems have not been tested and therefore no warranties can be given as to their good working order.