



North End Road, London W14
£750,000 Leasehold







Description

This outstanding first-floor flat on North End Road represents the pinnacle of modern connected living, offering two bedrooms and two bathrooms within an intelligently designed layout. The spacious open-plan living, dining, and kitchen area forms the centerpiece of the home, finished with elegant herringbone flooring and flooded with natural light. The premium German-designed kitchen features fully integrated Siemens appliances, handleless cabinetry, and luxurious Calacatta-Gold style quartz worktops.

The accommodation includes two generously proportioned bedrooms with bespoke fitted wardrobes and soft luxury carpeting. The main bedroom benefits from an en-suite bathroom, while a second spa-inspired bathroom serves the rest of the flat. Both bathrooms showcase premium fixtures by AXOR, Hansgrohe, and Duravit, complemented by smart underfloor heating and integrated audio systems.

Advanced smart home technology elevates everyday living through Hikvision video intercom, tado° heating control with room-by-room management, and full-fibre FTTP connectivity throughout. The integrated Sonos ceiling speaker system delivers seamless multi-room audio, while Cat 7 cabling supports high-performance streaming and remote working.

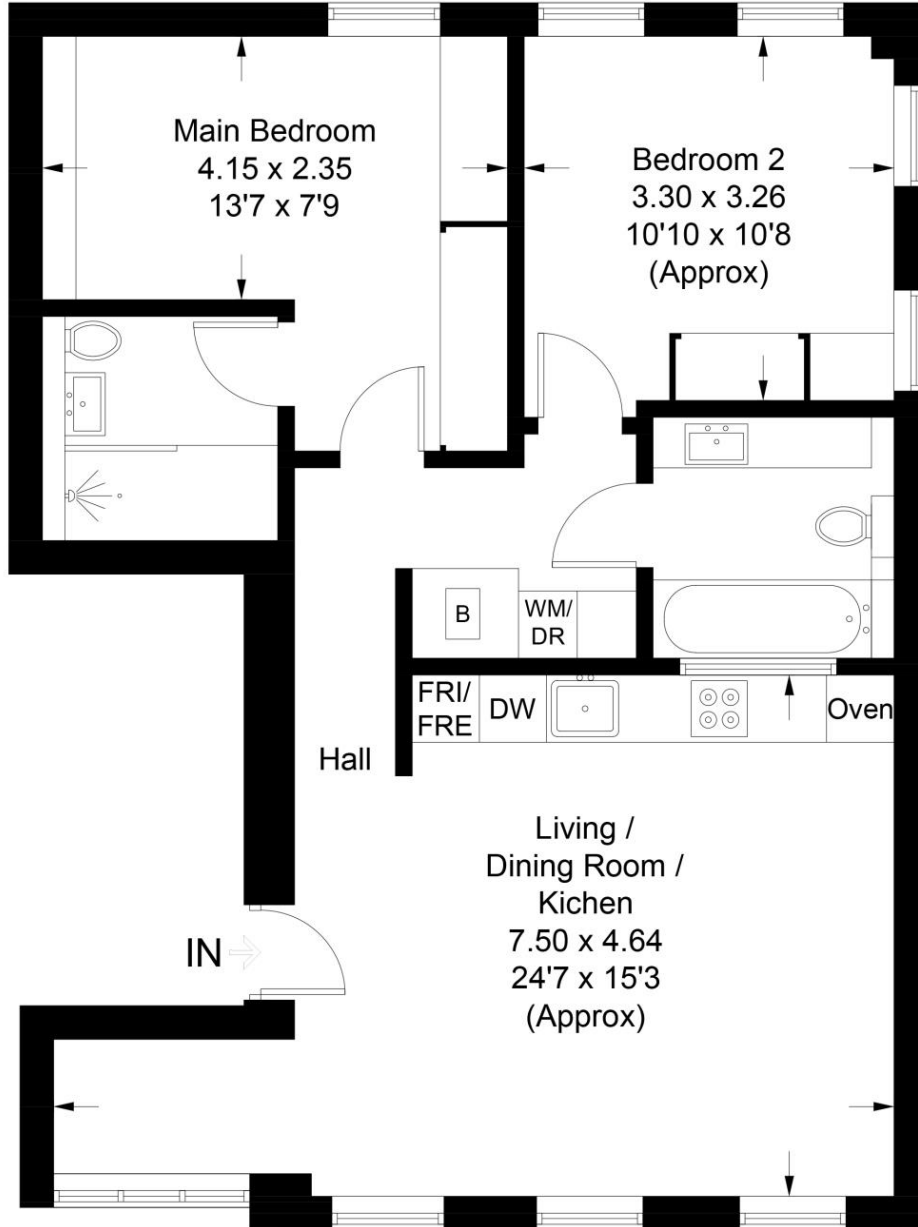
- 2 bedrooms
- 2 bathrooms
- Open plan living
- Interior bespoke designer bathrooms
- Kensington Olympia Station (0.5 miles)
- Hammersmith Station (0.7 miles)

Floorplan

735 sq ft | 68 sq m

Flat 2 North End Road, W14

Approximate Gross Internal Area = 68.3 sq m / 735 sq ft



First Floor

Illustration for identification purposes only, measurements are approximate, not to scale. Fourlabs.co © (ID1310652)

Kensington
387 Kensington High Street,
London W14 8QA
+4420 7087 5696
lettingskensington@eu.jll.com

Urban living, your way.

jll.co.uk/residential

© 2019 Jones Lang LaSalle IP, Inc. All rights reserved. All information contained herein is from sources deemed reliable; however, no representation or warranty is made to the accuracy thereof.

