



Parkgate, Upper College Street, Nottingham
£1,200 PCM

 **Comfort**
Estates



Parkgate Upper College Street, Nottingham

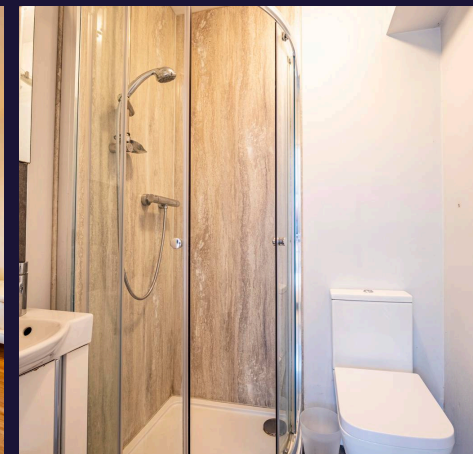
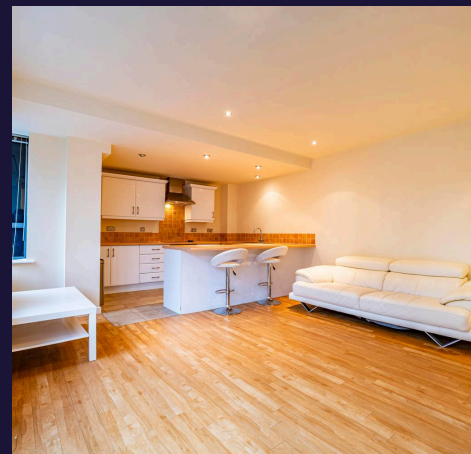
Welcome to this beautifully presented two-bedroom, two-bathroom apartment in the sought-after Parkgate development with underground parking and residents' private gym. Ideally situated on the edge of The Park Estate and just a short walk from Nottingham City Centre.

This stylish and well-maintained apartment offers a perfect blend of modern living and convenience. The spacious open-plan living area is filled with natural light and opens onto a private balcony, providing the perfect spot to relax or entertain. The kitchen is also a great size and well-equipped, complementing the apartment's bright and airy feel.

Both bedrooms are generously sized, with the main bedroom benefiting from an en-suite shower room, while the second bathroom would make a great spare room or home office.

Ideally located close to shops, cafés, schools, and excellent transport connections, offering both convenience and a vibrant community feel, all within walking distance to Nottingham City Centre.

Available NOW!





Lounge/Diner

14' 11" x 16' 8" (4.55m x 5.07m)

A bright and airy open-plan space featuring stylish laminate flooring throughout. The modern kitchen includes integral appliances for a sleek, seamless look, while the living area opens onto a private balcony – perfect for relaxing or entertaining.

Kitchen / Diner

11' 4" x 5' 4" (3.46m x 1.63m)

The modern kitchen features sleek cabinetry, integral appliances, and ample workspace, creating a practical and stylish area ideal for everyday living and entertaining.

Bedroom 1

14' 4" x 11' 1" (4.36m x 3.37m)

A spacious double bedroom featuring soft carpeted flooring and a private ensuite for added convenience.

En-suite

5' 1" x 5' 3" (1.55m x 1.61m)

A modern, high-quality ensuite shower room including a walk-in shower, contemporary fittings, and a sleek vanity unit.

Bedroom 2

10' 6" x 7' 4" (3.20m x 2.23m)

A well-proportioned second double bedroom offering ample space for furnishings and finished with soft carpeted flooring.

Bathroom

5' 6" x 6' 8" (1.67m x 2.04m)

Modern family bathroom with modern, white suite comprising a P-shaped bath with shower over, a wash hand basin, and a low-level flush W.C.





Comfort Estates



FLOOR PLAN

GROSS INTERNAL AREA
FLOOR PLAN 65.0 m²
TOTAL : 65.0 m²

SIZES AND DIMENSIONS ARE APPROXIMATE, ACTUAL MAY VARY.



Comfort Estates

Comfort Estates, 47 Derby Road - NG1 5AW

0115 9338997 • info@comfortestates.co.uk • www.comfortestates.co.uk