

Tudor

syrfewyr siartredig | gwerthwyr eiddo | rheolwyr meddiannau
chartered surveyors | estate agents | property managers



Blaen Ffridd, Chwilog, LL53 6NX

Or nearest offer £339,999

- Spacious Dormer Bungalow
- Convenient for Criccieth & Pwllheli
- Ample Parking, Garage & Rear Garden
- Outskirts of Small Rural Village
- 2 Receptions, 3 Bedrooms & 2 Bathrooms
- No Chain



Blaen Ffridd, Chwilog, LL53 6NX

Tudor Estate Agents & Chartered Surveyors are delighted to offer for sale this spacious dormer bungalow, occupying a convenient position on the outskirts of Chwilog — a charming rural village approximately five miles from the seaside market town of Pwllheli for the glorious Llyn Peninsula.

The property has been thoughtfully extended to provide generous and adaptable accommodation, benefiting from oil-fired central heating and double glazing throughout.

In brief, the accommodation comprises: Porch/Sun Room. Entrance Hall. Lounge. Dining Room. Kitchen. Bedroom & Bathroom. Utility. Garage. To the first floor is the Principal Bedroom suite, complete with Dressing Room/Office and En-suite Bathroom. Spacious Rear Bedroom

To the front the property benefits of drive with ample parking leading to a rear lawned garden.

Viewing highly recommended

GROUND FLOOR

Porch/Sun Room

Radiator.

Hall

Airing cupboard with cylinder.

Lounge 12'8 x 17'8 (3.86m x 5.38m)

Living flame gas fire. Radiator.

Dining Room 12'9 x 10'5 (3.89m x 3.18m)

Maximum measurements to recess. Radiator.

Rear Bedroom 9'10 x 10'4 (3.00m x 3.15m)

Plus recess for wardrobe. Radiator.

Bathroom 5'10 x 6'4 (1.78m x 1.93m)

Low level w.c. Pedestal washbasin. Panelled bath.

Kitchen 10'2 x 13'0 (3.10m x 3.96m)

Fitted kitchen with breakfast bar. Single drainer stainless steel sink unit with mixer tap. Hob and double oven. Integral fridge. Radiator.

Rear Hall

Stairs first floor. Oil boiler for central heating and hot water.

Garage 9'0 x 16'3 (2.74m x 4.95m)

Up and over door. Toilet.

Utility 9'0 x 6'0 (2.74m x 1.83m)

Belfast sink. Plumbing for washing machine. Quarry tile floor. Outside door.

FIRST FLOOR

Landing

Main Bedroom 17'6 x 15'3 (5.33m x 4.65m)

Maximum measurements L shaped room. Dormer window. Built in wardrobes. Limited headroom at eaves. Door to:



Tudor

Plas Y Ward, Y Maes, Pwllheli, Gwynedd, LL53 5DA

T: 01758 701 100

E: info@huwtudor.co.uk

www.huwtudor.co.uk

Blaen Ffridd, Chwilog, LL53 6NX

Office/Dressing Room 10'0 x 10'3 (3.05m x 3.12m)

Limited headroom at eaves. Eaves storage cupboard. Radiator.

En-Suite Bathroom 9'7 x 8'3 (2.92m x 2.51m)

Low level w.c. Bidet. Washbasin. Shower cubicle with electric shower.

Rear Bedroom 17'0 x 10'5 (5.18m x 3.18m)

Limited headroom at eaves. Radiator.

OUTSIDE

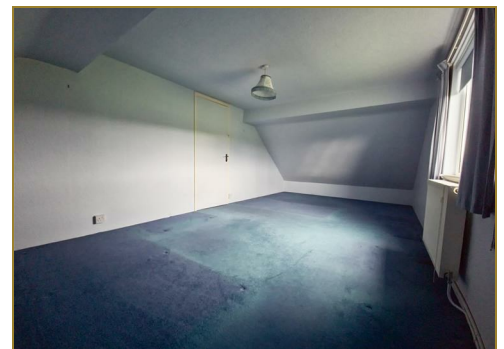
Ample parking to front. Rear lawn garden.

SERVICES

We understand that mains water, electricity and drainage are connected to the property. Oil Central Heating. Prospective purchasers should make their own enquiries as to the suitability and adequacy of these services.

TENURE

We understand that the property is freehold with vacant possession available on completion.



Tudor

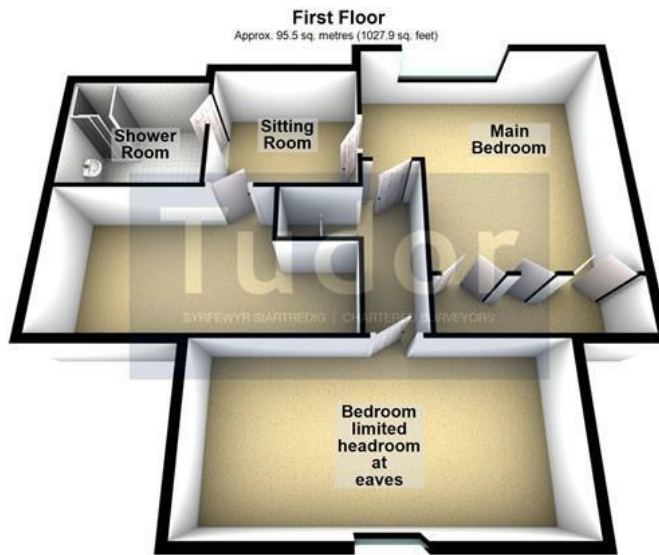
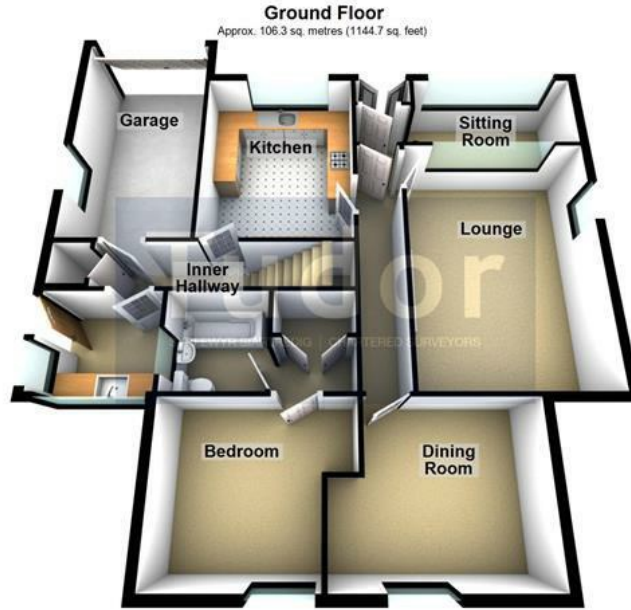
Plas Y Ward, Y Maes, Pwllheli, Gwynedd, LL53 5DA

T: 01758 701 100

E: info@huwtudor.co.uk

www.huwtudor.co.uk

Blaen Ffridd, Chwilog, LL53 6NX



Total area: approx. 201.8 sq. metres (2172.6 sq. feet)

Copyright Tudor Chartered Surveyors & Estate Agents. For room identification only. Plan produced using PlanUp.

Energy Efficiency Rating		Environmental Impact (CO ₂) Rating			
Very energy efficient - lower running costs	Current	Worst	Very environmentally friendly - lower CO ₂ emissions	Current	Worst
(92 plus) A			(92 plus) A		
(81-91) B			(81-91) B		
(69-80) C			(69-80) C		
(55-68) D			(55-68) D		
(39-54) E			(39-54) E		
(21-38) F			(21-38) F		
(1-20) G			(1-20) G		
Not energy efficient - higher running costs			Not environmentally friendly - higher CO ₂ emissions		
England & Wales	EU Directive 2002/91/EC		England & Wales	EU Directive 2002/91/EC	

Energy Efficiency Rating: 74
Environmental Impact (CO₂) Rating: 48



Tudor

Plas Y Ward, Y Maes, Pwllheli, Gwynedd, LL53 5DA

T: 01758 701 100

E: info@huwtudor.co.uk

www.huwtudor.co.uk