



Powerscroft Road, E5

£2,650 Per week

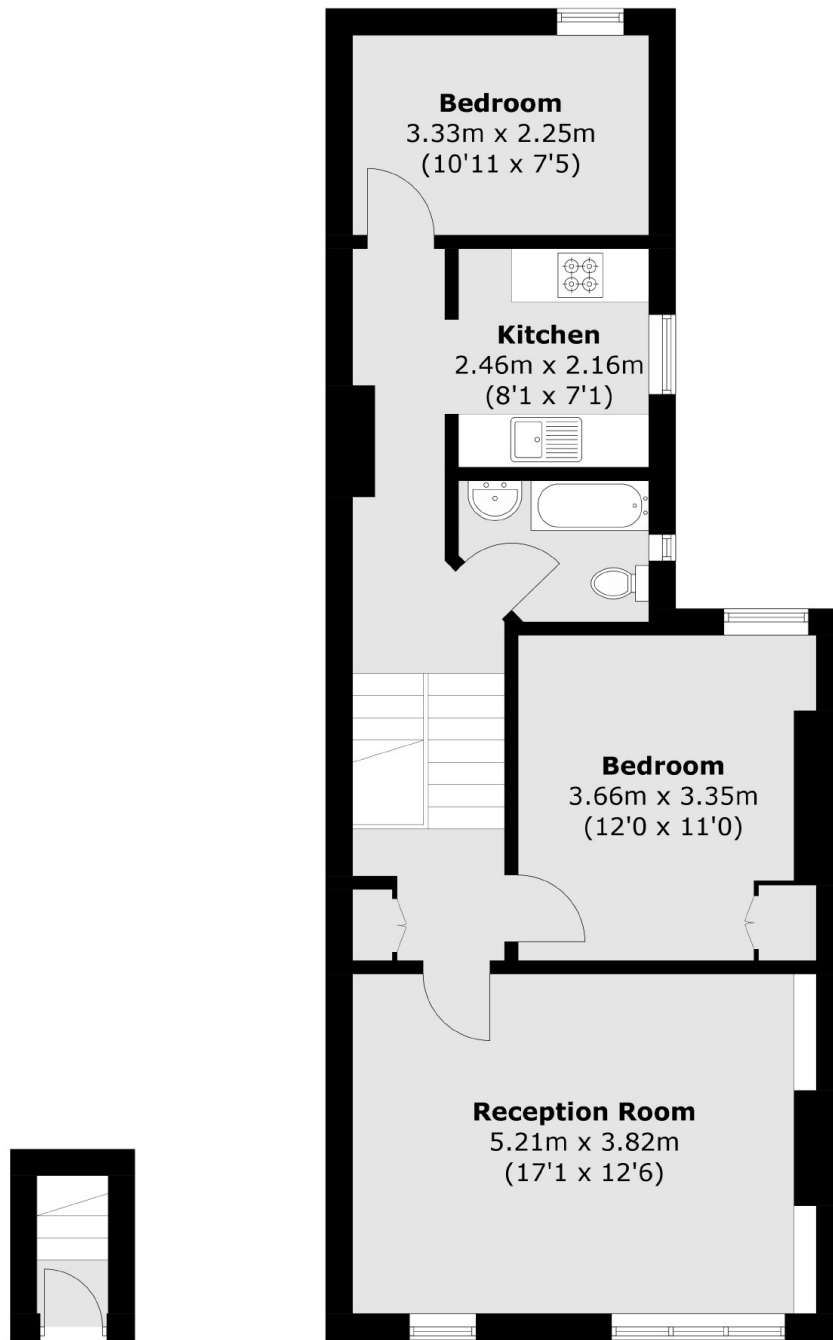
A two bedroom split-level period conversion set in the heart of Clapton. The property has been recently renovated whilst still maintaining some original period features, including original hardwood floors in the living room and the main bedroom. The living room is bright throughout, due to multiple sash windows. There is also a modern kitchen and bathroom.

Situated in between Lower Clapton Road and Chatsworth Road along with its many shops, cafés and amenities. Clapton Overground Station is just under a mile away, providing excellent transport links into the city

Features

- Unfurnished
- Two double bedroom
- Spilt Level
- Period conversion
- Wooden Floor
- Chatsworth Road

Powerscroft Road, London, E5



Ground Floor

First Floor

Total area (approx.): 63.5 sq. m (683.5 sq. ft)