

WE VALUE



YOUR HOME



Argosy Close, Chalgrove  
Guide Price £390,000



Offered to the market with no onward chain, this well-presented three bedroom semi-detached home provides an excellent opportunity for a range of buyers.

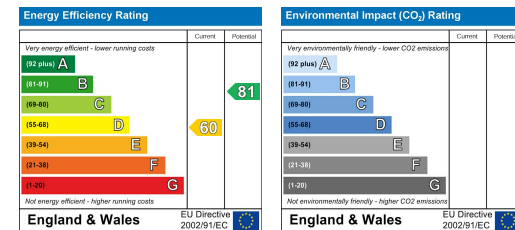
The ground floor features a generously sized lounge, ideal for both relaxing and entertaining, along with a well-appointed kitchen offering ample space for everyday living. Upstairs, the property comprises three well-proportioned bedrooms, including two comfortable doubles, as well as a family bathroom.

Externally, the home benefits from an enclosed rear garden enjoying a good degree of privacy, perfect for outdoor dining. Garage and a driveway providing off-street parking for two vehicles.



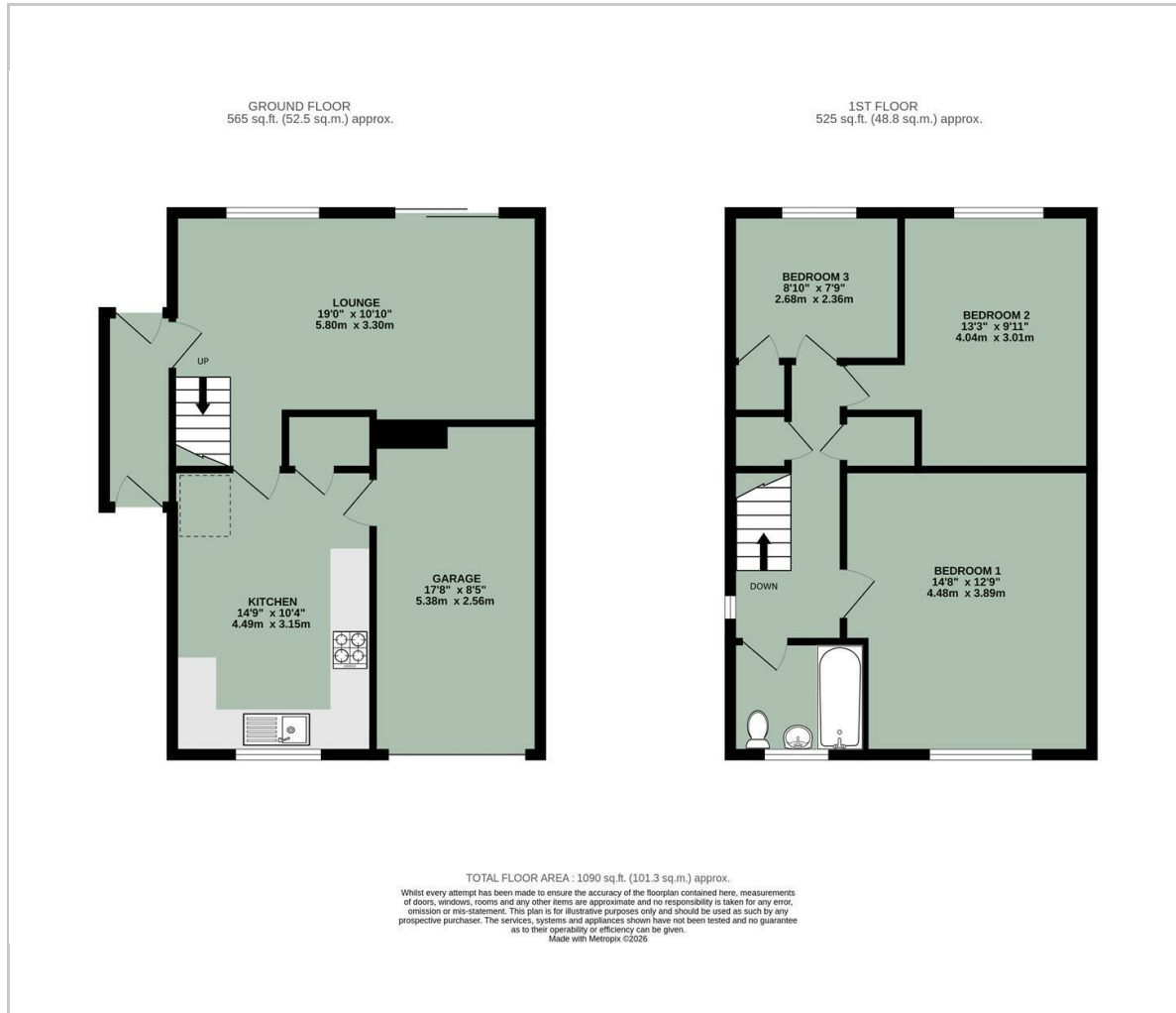


- OFFERED WITH NO ONWARD CHAIN
- SEMI-DETACHED FAMILY HOME
- ENCLOSED REAR GARDEN WITH GOOD DEGREE OF PRIVACY
- THREE BEDROOMS
- FAMILY BATHROOM
- GARAGE & OFF-STREET PARKING



Energy Efficiency Graph

## Floor Plan



## Area Map



## Viewing

Please contact our In House Sales & Lettings Office on 01491 839999 opt.1 if you wish to arrange a viewing appointment for this property or require further information.

These particulars, whilst believed to be accurate are set out as a general outline only for guidance and do not constitute any part of an offer or contract. Intending purchasers should not rely on them as statements of representation of fact, but must satisfy themselves by inspection or otherwise as to their accuracy. No person in this firm's employment has the authority to make or give any representation or warranty in respect of the property.

28 St Martins Street, Wallingford, Oxfordshire, OX10 0AL  
Tel: 01491 839999 opt.1 Email: [sales@inhouseestateagents.co.uk](mailto:sales@inhouseestateagents.co.uk) [www.inhouseestateagents.co.uk](http://www.inhouseestateagents.co.uk)