



Hatcham Park Mews, SE14

£800,000

Tucked away in the highly sought-after Hatcham Park Mews, this immaculate three-bedroom mews house offers the perfect blend of stylish modern living and peaceful mews-style privacy, right in the heart of New Cross.

Located in the leafy conservation area of Hatcham Park, the property is within easy walking distance of New Cross Gate Station (Zone 2), offering fast and frequent links into London Bridge, Shoreditch, and beyond via Overground and mainline services. You're also moments from local cafés, shops, and the creative energy of nearby Deptford and Peckham.

Features

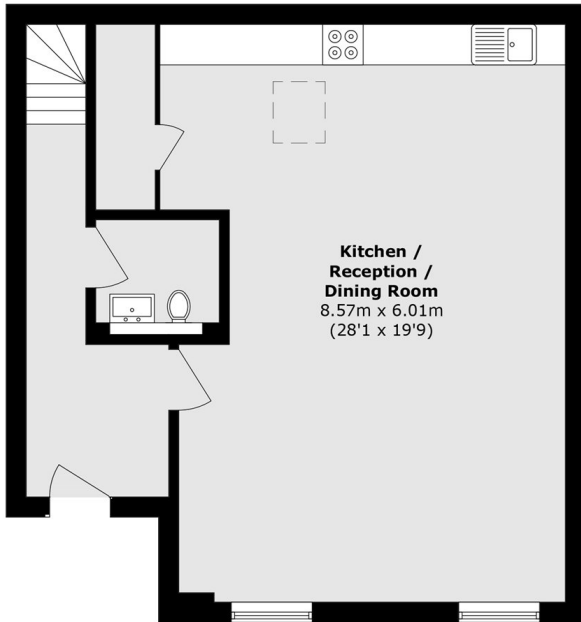
- Three Bedroom Home
- Mews House
- Secure, Gated Development
- Private Parking
- Close To Transport
- Chain Free



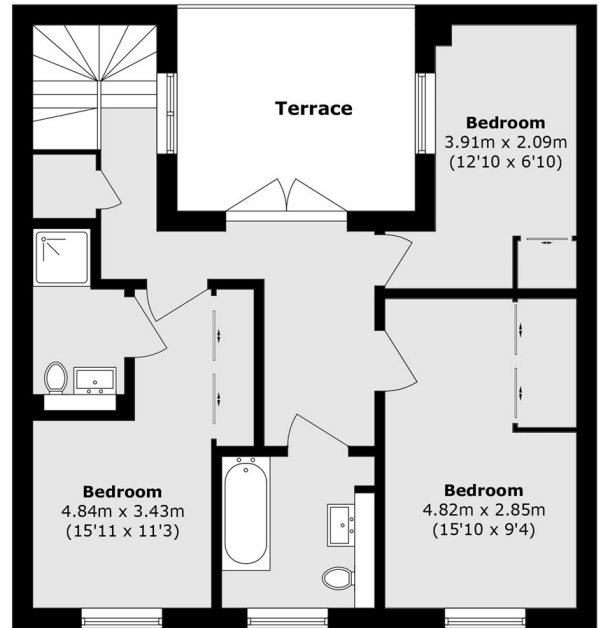
Hatcham Park Mews, SE14



Hatcham Park Mews, London, SE14



Ground Floor



First Floor

Total area (approx.): 122.2 sq. m (1315.3 sq. ft)
Terrace area (approx.): 10.6 sq. m (114 sq. ft)