



Cavendish Road, NW6

£400,000

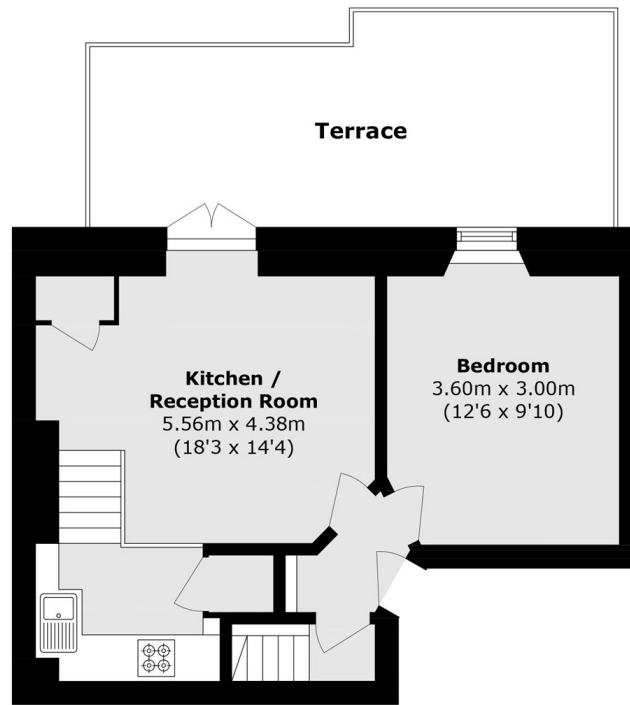
A charming one bedroom apartment set within an attractive Victorian conversion. The standout feature is a superb private terrace, providing an exceptional outdoor space for entertaining, dining and relaxing.

Situated on sought after Cavendish Road, the property is ideally located close to the amenities, cafés and restaurants of Kilburn, Queen's Park and West Hampstead. Excellent transport links are available via Kilburn Underground Station and Brondesbury Station, providing easy access across London.

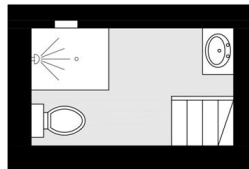
Features

- One Bedroom
- Victorian Conversion
- Integrated Appliances
- Close To Station
- Private Terrace
- Ideal For Entertaining

Cavendish Road,
London, NW6



Ground Floor



Lower Ground Floor

Total area (approx.): 38.4 sq. m (413.3 sq. ft)
Terrace total (approx.): 17.2 sq. m (185.1 sq. ft)