



The Bewdley Eastrea Road, Whittlesey Peterborough
£320,000 Freehold

**Sharman
Quinney**

Key Features



- Brand New
- Detached 3 Bedroom Home
- Integral garage and driveway with side-by-side parking for 2 cars
- Spacious Lounge
- Open-plan kitchen diner with French doors onto the garden

The spacious lounge has plenty of room to relax in. To the back of this home is the open-plan kitchen diner with French doors onto the garden. After a long day, escape upstairs to a spacious main bedroom with en suite and dressing area. You'll also find a further double, a single bedroom and a family bathroom.

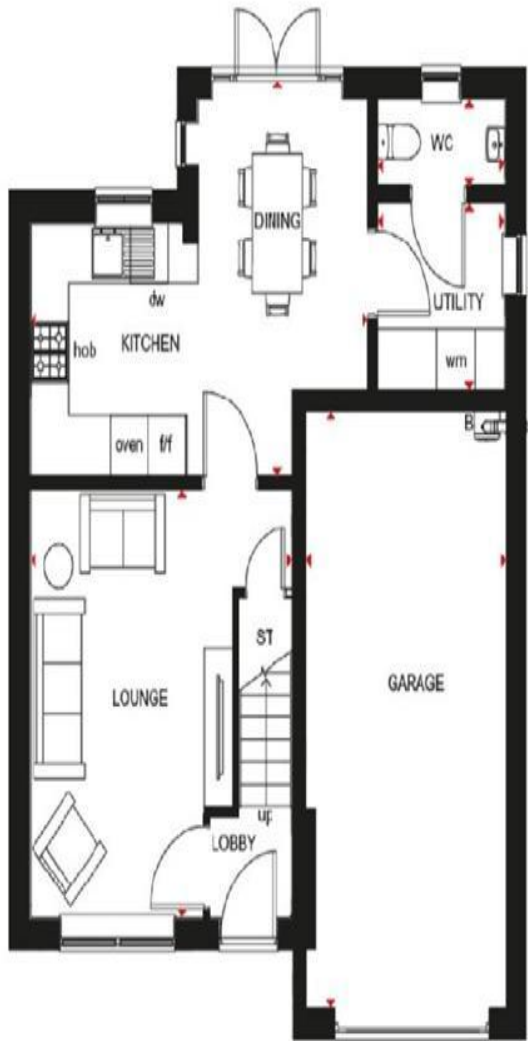
Whittlesey Lakeside is a new homes development located on the edge of the popular market town of Whittlesey.

Minutes from your home, you will find the bustling town centre where you can enjoy the independent eateries and pubs, a range of shops as well as a library and leisure centre. The town has excellent road links - with easy access to the A605, A1 and A47.



Explore miles of Cambridgeshire countryside within walking distance. Ferry Meadows Country Park and Crown Lakes are just a short drive away. Fenland Aqua Park is also on your doorstep.

Call to arrange your viewing and to get more information.



** Hot water cylinder to selected plots for air source heat pump technology

To view this property call Sharman Quinney on:
01733 205000

Selling your property?

Contact us to arrange a **FREE** home valuation.

 01733 205000

 46a Market Street, Whittlesey, PETERBOROUGH, Cambridgeshire, PE7 1BD

 whittlesey@sharmanquinney.co.uk

 www.sharmanquinney.co.uk



 SCAN ME



Sharman Quinney Holdings Limited is registered in England and Wales under company number 4174227, Registered Office is Cumbria House, 16-20 Hockliffe Street, Leighton Buzzard, Bedfordshire, LU7 1GN. VAT Registration Number is 500 2481 05.

1: These particulars do not constitute part or all of an offer or contract. 2: The measurements indicated are supplied for guidance only and as such must be considered incorrect. 3: Potential buyers are advised to recheck the measurements before committing to any expense. 4: Sharman Quinney has not tested any apparatus, equipment, fixtures, fittings or services and it is the buyers interests to check the working condition of any appliances. 5: Sharman Quinney has not sought to verify the legal title of the property and buyers must obtain verification from their legal representative. 6: Intending purchasers will be asked to produce identification documentation at a later stage and we would ask your co-operation in order that there will be no delay in agreeing the sale. Ref: WHT205070 - 0001

