



Hedgehog Gate, Masons Bridge Road





We were lucky to be offered such an exciting site by a close friend allowing us to create our own home from the ground up. It has been a joy and a privilege to be the custodians of this house for the last 12 years, indeed-an architects dream





Designed with a bold vision and built to an exacting standard, this extraordinary self-build home is a true one-off. Featured in Build It magazine and Building the Dream on Channel 4, it is an architectural statement that seamlessly blends striking aesthetics with thoughtful functionality. Every detail, from the interplay of textures to the confident use of colour and shape, has been carefully considered to create a home unlike any other.

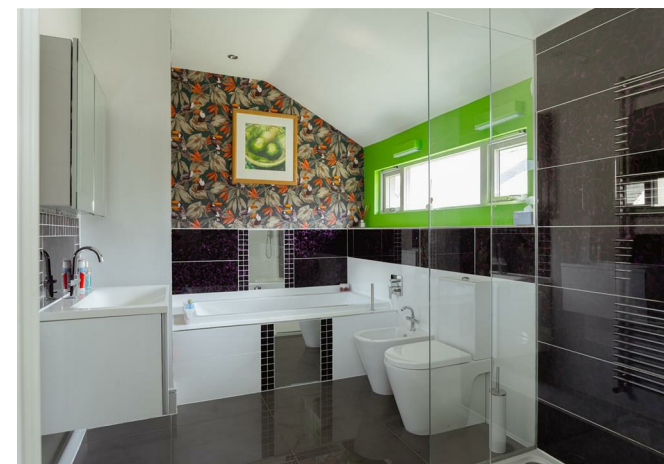
The vaulted ceiling reception room is a breathtaking space, filled with natural light and designed to be both dramatic and inviting. Expanses of glazing frame the outdoors, drawing in the ever-changing light and providing a seamless connection to the garden. Water-fed underfloor heating runs beneath polished surfaces, offering a luxurious and energy-efficient warmth throughout the home.

Each of the three double bedrooms has been designed as a private retreat, complete with its own en suite, ensuring a perfect balance of space and comfort. There is also a comfortable single bedroom on the ground floor. The interplay of bold materials and clever architectural design continues through these spaces, creating a home that is as inspiring as it is practical.



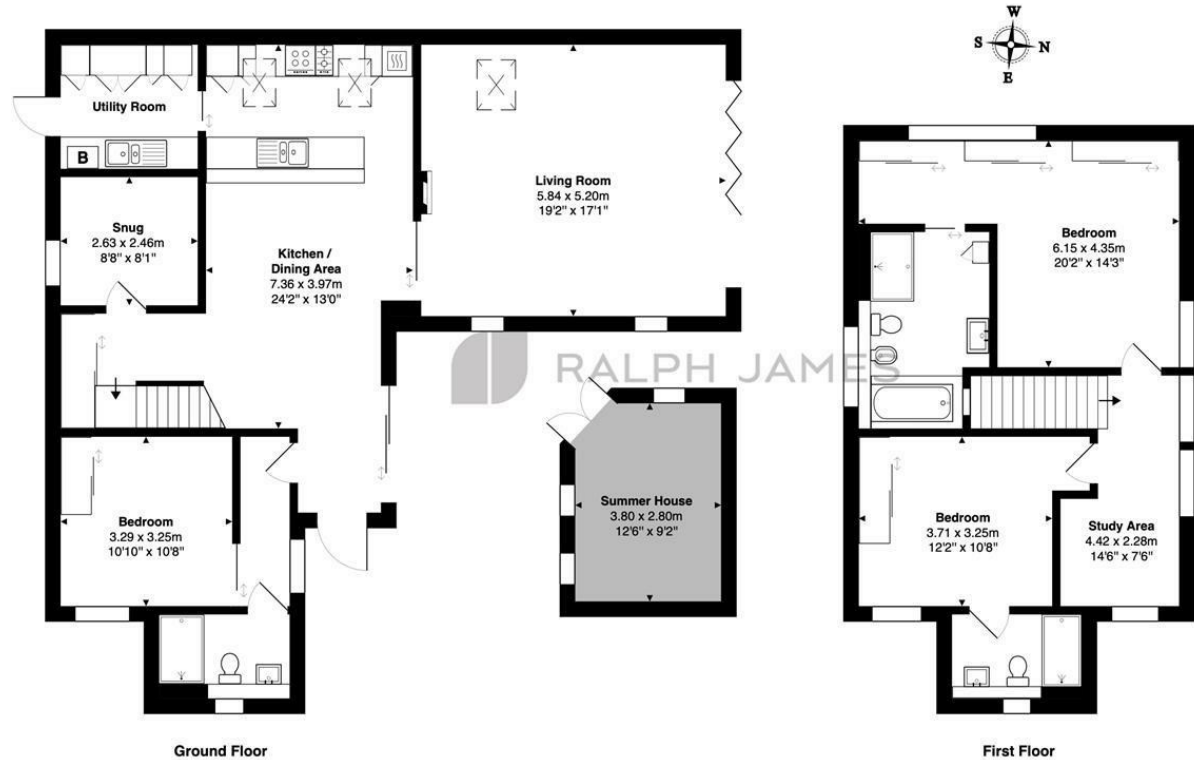
Outside, the property is equally impressive. The expansive driveway accommodates up to six cars, offering both convenience and a striking first impression. At the rear, the secluded garden extends to a beautifully positioned summer house, tucked away for privacy and offering a peaceful escape. Looking back towards the house, the rear elevation is as striking as the front, a testament to the meticulous craftsmanship and creativity that define this build.

This is a home that cannot be fully captured in words. It is an experience—one that is best appreciated in person.



Need to know

- A striking architect-designed self-build, featured in Build It magazine and Building the Dream on Channel 4.
- No onward chain.
- Impressive vaulted ceiling reception room, filled with natural light and architectural detail.
- Four generous bedrooms, three of which have en suites.
- Water-fed underfloor heating throughout, providing efficient and consistent warmth.
- Expansive glazing creates a seamless connection between indoor and outdoor spaces.
- A beautifully secluded garden with a summer house positioned for total privacy.
- A striking rear elevation, showcasing the home's unique design from every angle.
- Large driveway and parking for up to six cars, offering both practicality and presence.
- Thoughtfully designed with bold colours, textures, and shapes to create a one-of-a-kind living space.



Masons Bridge Road, Redhill

Total Area: 161.1 m² ... 1734 ft² (excluding summer house)

FOR ILLUSTRATIVE PURPOSES ONLY.

Whilst every attempt has been made to ensure the accuracy of the floor plan shown, all measurements, positioning, fixtures, features, fittings and any other data shown are an approximate interpretation for illustrative purposes only and are not to scale.

No responsibility is taken for any error, omission, miss-statement or use of data shown.

The above statement applies to both 'Still Moving London LTD' and the Company or individual displaying this floor plan.

Unauthorised reproduction prohibited.

© Still Moving London LTD (www.stillmoving.london)

 RALPH JAMES

Interested?

redhill@ralphjames.co.uk
01737 765 555

ralphjames.co.uk