

Buy. Sell. Rent. Let.



Crowland Avenue, Grimsby



3



1



2

When it comes to
property it must be


lovelle



£160,000



Immaculate three-bedroom semi-detached house for sale in a popular Grimsby residential area, set on a generous corner plot with large driveway and garage, featuring open-plan living/dining, modern kitchen with laundry and cloakroom, contemporary shower room, pleasant garden, and convenient access to local amenities, schools, parks, and transport links.

Key Features

- Semi-Detached House
- Three Bedrooms
- Lounge & Open Plan Living Kitchen
- uPVC DG & CH
- Generous Corner Plot, Garage & Driveway
- Popular Location
- EPC rating C
- Tenure: Freehold





This immaculate three-bedroom semi-detached house is offered to market in a popular residential area of Grimsby, set on a generous corner plot with a large driveway and garage.

The ground floor features a welcoming hallway leading to an open-plan living and dining area, with a lounge enjoying a bay window. The modern kitchen offers fitted units and an adjoining laundry room, from which there is access to a cloakroom with WC and sink. Upstairs are two double bedrooms and a single bedroom, together with a modern shower room including sink and WC. The property benefits from uPVC double glazing and gas central heating. Externally, there is a pleasant garden providing useful outdoor space.

Situated within easy reach of local amenities, the property is well placed for everyday shopping and services in Grimsby. Families and first-time buyers will appreciate the nearby schools and established walking routes in the surrounding area, including access to local parks and green spaces.

Public transport links are readily available, with Grimsby Town railway station typically around a 10-15 minute drive away. From there, regular services run to Cleethorpes in around 10 minutes and to Lincoln in approximately 1 hour, with connections onwards to larger centres such as Doncaster and Newark. Local bus routes also operate nearby, providing access into Grimsby town centre, its shops, cafes and further facilities.

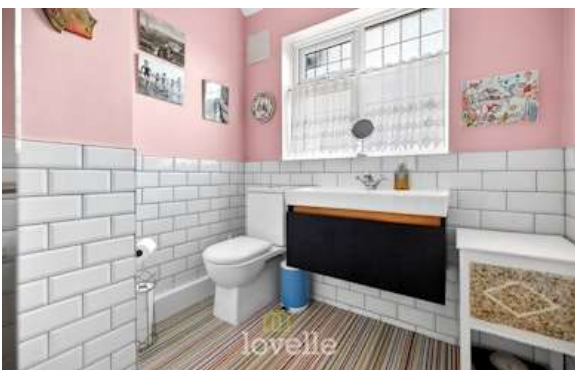
This three-bedroom semi-detached house presents a well-finished home in a convenient and popular location.

Disclaimer

We endeavour to make our sales particulars accurate and reliable, however, they do not constitute or form part of an offer or any contract and none is to be relied upon as statements of representation or fact. Any services, systems and appliances listed in this specification have not been tested by us and no guarantee as to their operating ability or efficiency is given. All measurements have been taken as a guide to prospective buyers only, and are not precise. If you require clarification or further information on any points, please contact us, especially if you are travelling some distance to view.

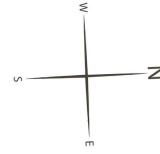
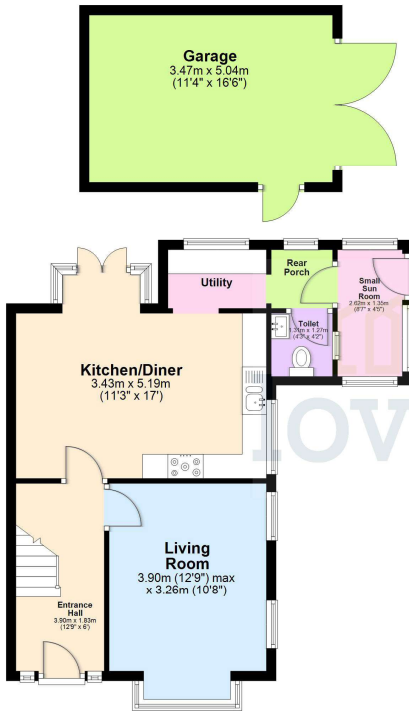
Mobile and broadband

It is advised that prospective purchasers visit checker.ofcom.org.uk in order to review available wifi speeds and mobile connectivity at the property.



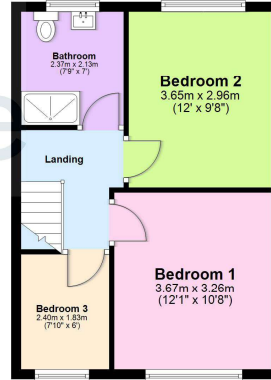
Ground Floor

Approx. 67.9 sq. metres (730.4 sq. feet)



First Floor

Approx. 38.5 sq. metres (414.4 sq. feet)



Total area: approx. 106.4 sq. metres (1144.8 sq. feet)

The provided floor plan is intended for general informational purposes only and may not accurately represent the exact dimensions, layout, or features of the property. The floor plan should not be relied upon for making decisions about purchasing, renting, or modifying the property. Actual measurements and features may vary. It is recommended that interested parties conduct a physical inspection of the property to verify the accuracy of the floor plan and obtain specific information about the property's condition, amenities, and any other relevant details.

Plan produced using PlanUp.



When it comes to **property**
it must be

lovelle

01472 251918

grimsby@lovelle.co.uk

