



## 8 Wesley Grove

, Portsmouth, PO3 5ER

Offers in excess of £270,000





# 8 Wesley Grove

, Portsmouth, PO3 5ER

Offers in excess of £270,000



## Welcome to Wesley Grove...

Nestled in the popular Wesley Grove, this wonderful end terraced, three bedroom property is available now. Boasting two reception rooms, a family bathroom & downstairs toilet, and has the potential for an open plan kitchen diner / extension, this is an excellent family home or first time purchase.

As you approach the property you are greeted by a well kept front garden. Once through the front door, a large entrance hallway is before you, with the first reception room to the left. The living room is generously sized, offering space for multiple sofas and furnishings, boasting a bay window, carpeted floors and a fireplace.

The second reception room makes a great dining room, with space for a large family table and other furnishings and a door leading out to the conservatory, this is an excellent room for family dinners and hosting. With the kitchen next to it, there is great potential to create an open plan kitchen diner.

The kitchen is equipped with a range of fitted units, work top space, sink with drainer, and a pantry style cupboard.

To the rear of the property is a conservatory, providing more living space or a play room, there is a downstairs toilet for practicality and plumbing for washing facilities.

Upstairs you will find three bedrooms. Bedroom one and two are generously sized, with fitted wardrobes, offering space for large king size beds and other furnishings such as cabinets and bed side tables. Bedroom three would be suitable for a single bed, making an ideal children or guest room, or even a home office or dressing room.

The family bathroom is complete with a walk in shower, toilet, sink and radiator.

The garden is very well maintained, with patioed and grassy areas, a great place for relaxing in the sun or enjoying some gardening.

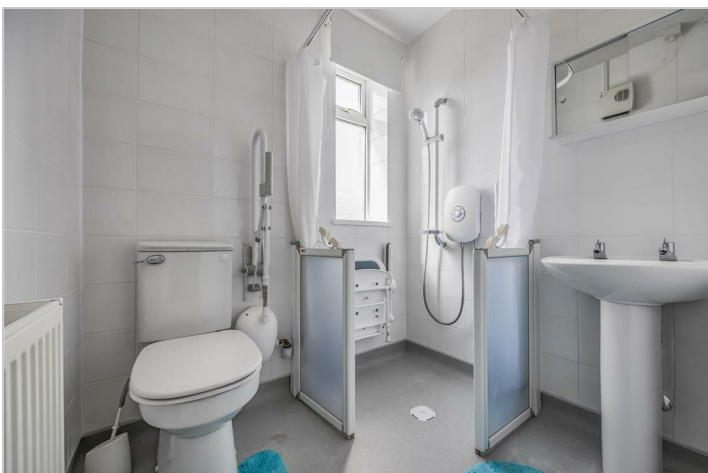
The property benefits from gas central heating and double glazing throughout.

Situated in Wesley Grove, you are within close proximity to many local amenities, as well as good primary and secondary schools. Hilsea station is less than a miles walk away for those who commute and enjoy day trips out.

Do not miss this chance to make this house your home. A viewing is highly advised to appreciate what this property has to offer. Please contact the sold by office today to arrange your appointment.



- END TERRACE
- THREE BEDROOMS
- TWO RECEPTION ROOMS
- DOWNSTAIRS TOILET & UPSTAIRS FAMILY BATHROOM
- GARDEN WITH SIDE ACCESS
- CLOSE TO LOCAL AMENITIES & TRAIN STATION





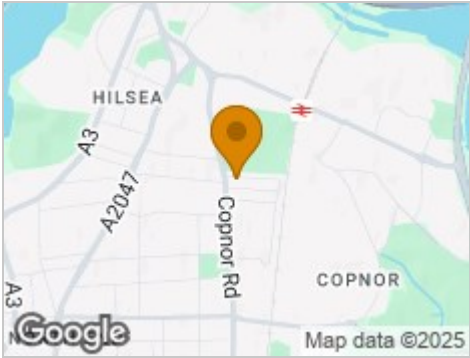
Road Map



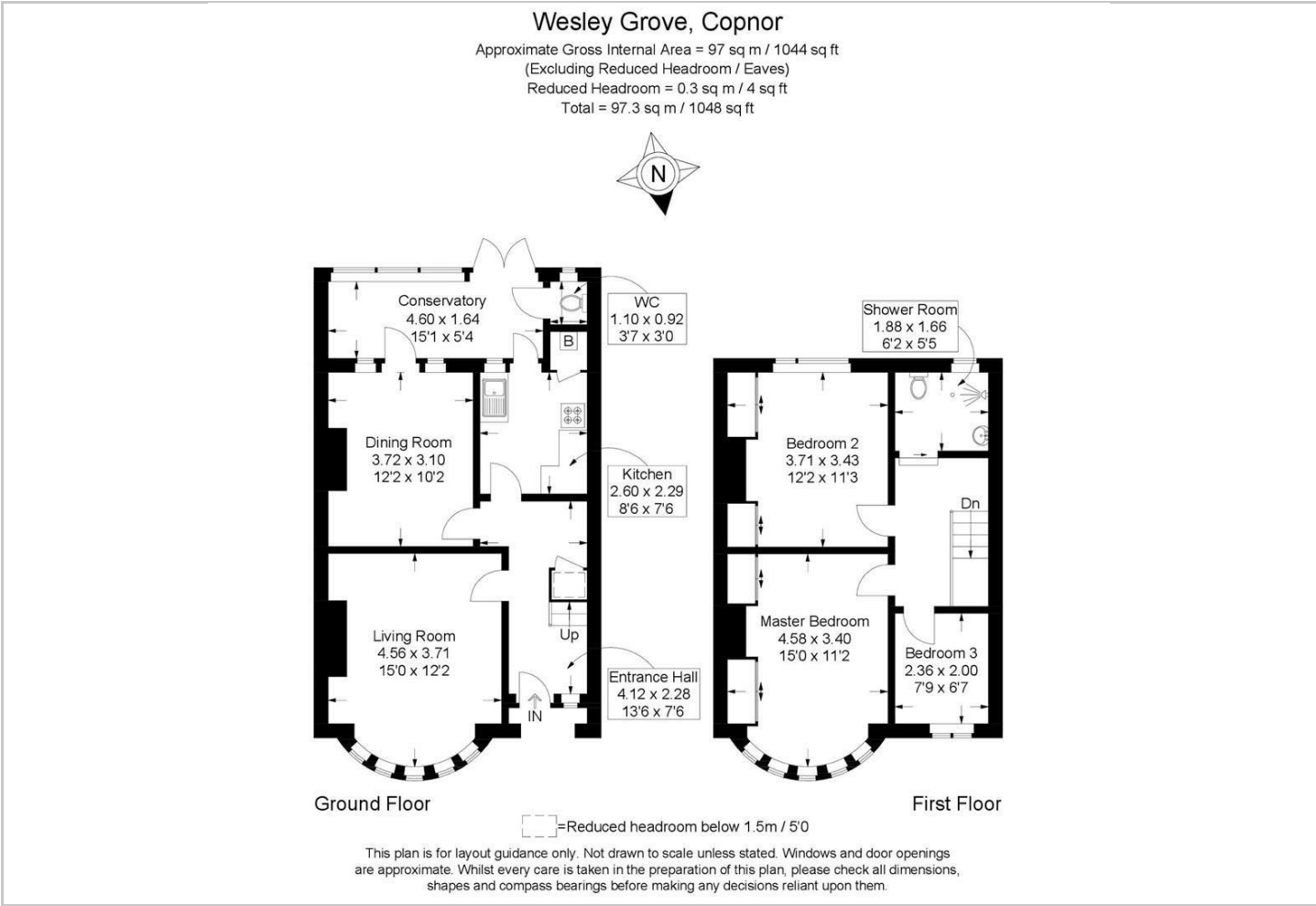
Hybrid Map



Terrain Map



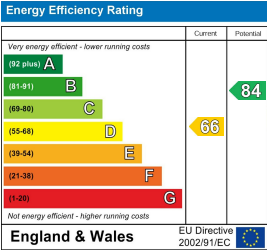
Floor Plan



Viewing

Please contact our Central Office on 02394 217317 if you wish to arrange a viewing appointment for this property or require further information.

Energy Efficiency Graph



These particulars, whilst believed to be accurate are set out as a general outline only for guidance and do not constitute any part of an offer or contract. Intending purchasers should not rely on them as statements of representation of fact, but must satisfy themselves by inspection or otherwise as to their accuracy. No person in this firms employment has the authority to make or give any representation or warranty in respect of the property.