



The Street, Takeley, CM22 6QP

- Available Immediately
 - Brand New House
 - Three Bedrooms
 - Two Ensuites
- Fitted Kitchen with Fitted Seimens Appliances
 - Ground Floor WC
 - Utility Room
 - 37' Rear Garden
- Ground Source Heat Pump (no gas)
 - Acoustic Glazing
- Parking to Front with EV Charger

£2,400 PCM (per calendar month) - Council Tax: TBC
Holding deposit equal to one weeks rent
Security deposit equal to five weeks rent

The Street

Takeley, CM22 6QP



Entrance Hall

Entrance door, stairs to first floor, under floor heating, tiled flooring.

Ground Floor WC

Low level WC, vanity wash hand basin, part tiled walls, under floor heating, tiled flooring.

Kitchen/Breakfast Room

Double glazed window to front, underfloor heating, tiled flooring. Kitchen includes wall and base units, island unit providing a breakfast bar area, granite work tops with inset sink. Range of Seimens appliances include induction hob with extractor, oven, microwave, dishwasher, full height fridge and separate freezer.

Utility Room

Part frosted double glazed door to side, Tiled flooring, underfloor heating, plumbing for washing machine, cupboard housing hot water system.

Reception Room

20'5 x 16' narrowing to 12'2 (6.22m x 4.88m narrowing to 3.71m)

Double glazed bi-folding doors to rear, double glazed windows to side and front, two sky lights, under floor heating, tiled flooring.

Landing

Carpet, stairs to ground floor.

Bedroom One

12'11 x 10'5 (3.94m x 3.18m)

Double glazed window to rear, fitted wardrobe, radiator, carpet.

Ensuite

Low level WC, vanity wash hand basin, walk in shower enclosure, heated towel rail, tiled walls, tiled flooring.

Bedroom Two

13' x 9'3 (3.96m x 2.82m)

Double glazed window to front, radiator, carpet.

Bedroom Three

10' x 9'1 (3.05m x 2.77m)

Double glazed window to front, carpet, radiator, built in wardrobe.

Bathroom

Frosted double glazed window to rear, low level WVC, vanity wash hand basin, panelled bath with overhead shower, heated towel rail, tiled walls, tiled flooring.

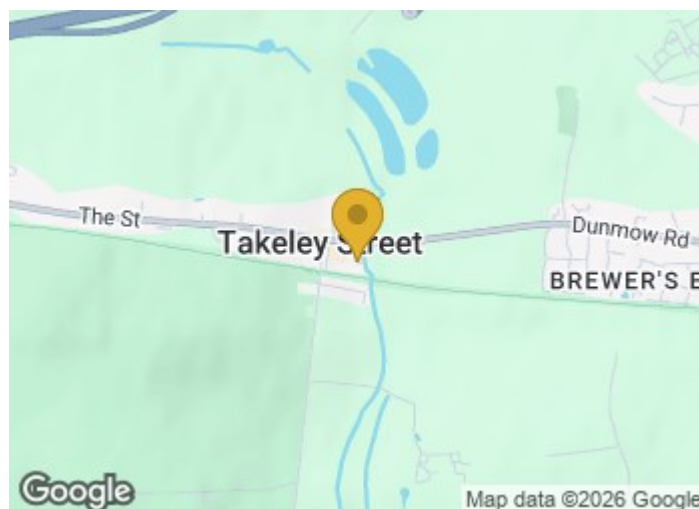
Garden

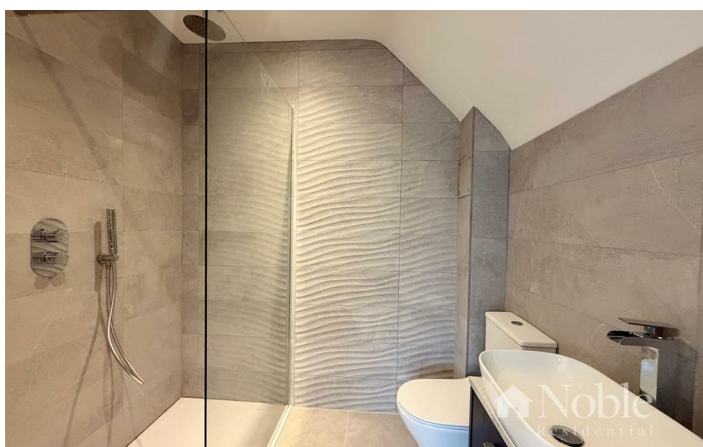
37' (11.28m)

Side pedestrian access, patio, lawn.

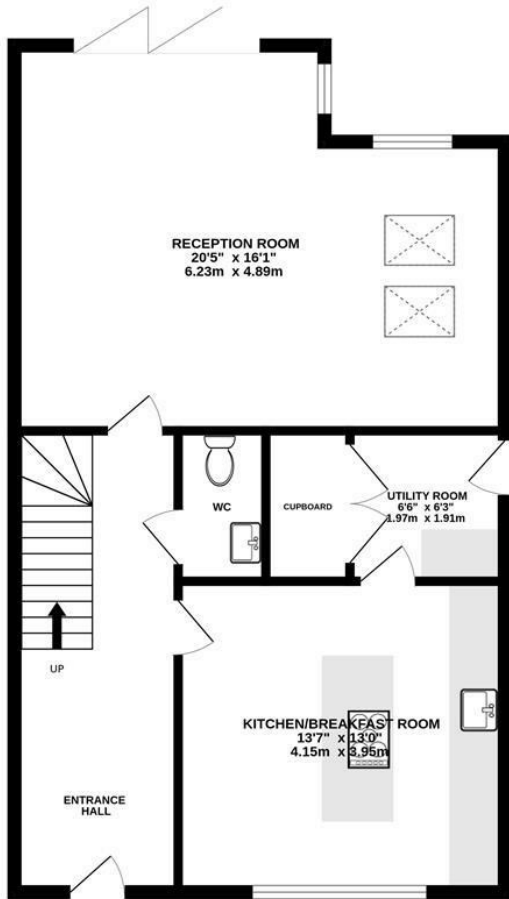
Parking

Private parking to front of property, EV charger.

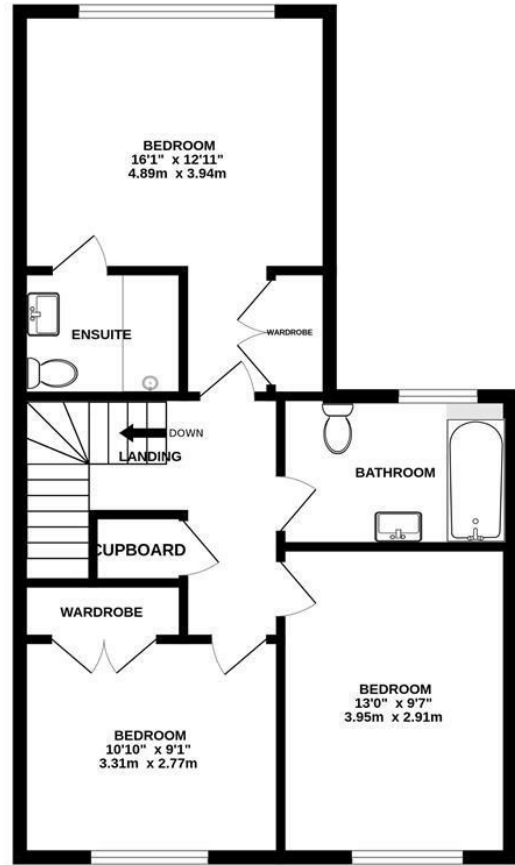




GROUND FLOOR
691 sq.ft. (64.2 sq.m.) approx.



1ST FLOOR
600 sq.ft. (55.8 sq.m.) approx.



TOTAL FLOOR AREA : 1291 sq.ft. (120.0 sq.m.) approx.

Whilst every attempt has been made to ensure the accuracy of the floorplan contained here, measurements of doors, windows, rooms and any other items are approximate and no responsibility is taken for any error, omission or mis-statement. This plan is for illustrative purposes only and should be used as such by any prospective purchaser. The services, systems and appliances shown have not been tested and no guarantee as to their operability or efficiency can be given.
Made with Metropix ©2025

These particulars, whilst believed to be accurate are set out as a general outline only for guidance and do not constitute any part of an offer or contract. Intending purchasers should not rely on them as statements of representation of fact, but must satisfy themselves by inspection or otherwise as to their accuracy. No person in this firm's employment has the authority to make or give any representation or warranty in respect of the property.

Material Information:
Council Tax Band: New Build
Tenure:

