



**POOLE
TOWNSEND**

Sir John Barrow Way, Ulverston

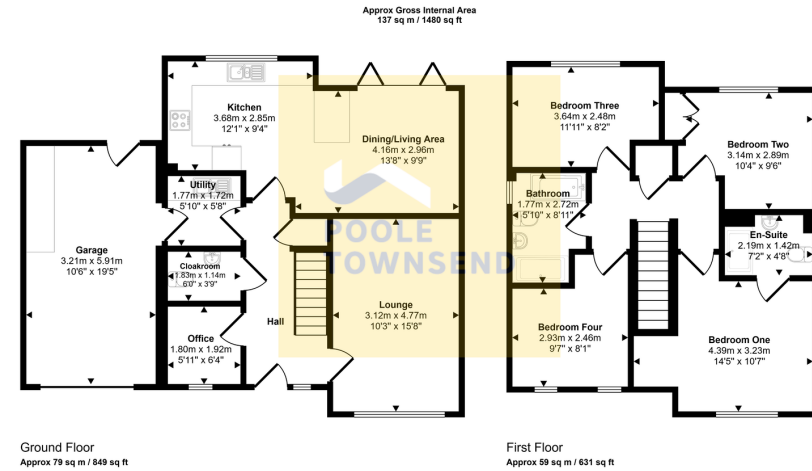
£445,000

🛏️ 4 🚿 2 🚗 2



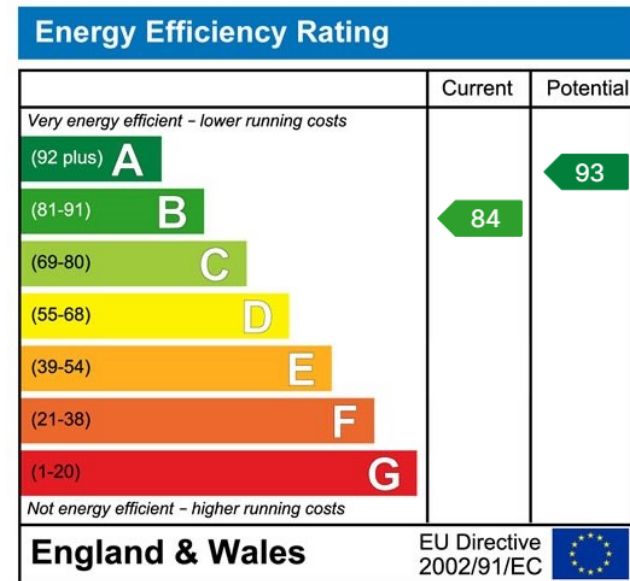
- Fantastic 4 Bedroom Detached Family Home
- Master With En-Suite
- South Facing Garden
- Catchment Area For Outstanding Local School
- Office Space For Home Working
- Large Drive And Single Garage
- Chain Free
- Freehold
- Walking Distance To Town Centre
- Kitchen/Diner With Bifold Doors Onto The Rear Garden





This floorplan is only for illustrative purposes and is not to scale. Measurements of rooms, doors, windows, and any items are approximate and no responsibility is taken for any error, omission or mis-statement. Icons of items such as bathroom suites are representations only and may not look like the real items. Made with Made Snappy 260.

Situated in a quiet estate of modern homes, within walking distance of the historic canal and around a mile from the centre of this vibrant market town, this impressive detached family home offers stylish and spacious accommodation throughout. The ground floor features a welcoming lounge, a superb open-plan kitchen, dining and living area with bi-fold doors opening onto the rear garden, plus a home office, utility room and cloakroom. Upstairs are four generous bedrooms, including a principal bedroom with en-suite, and a contemporary four-piece family bathroom. Outside, the rear garden offers a paved patio for al fresco dining, a split-level lawn and established planted borders. To the front, the driveway provides off-road parking for two cars, leads to the integral single garage, and benefits from an electric vehicle charging point. The property will be chain free.



Visit us at
www.pooletownsend.co.uk
enquiries@pooletownsend.co.uk

We are open
 Monday – Friday 9.00 – 5.00
 Saturday 9.00 – 1.00

Barrow 01229 811811
 Ulverston 01229 588111
 Grange 015395 33316
 Kendal 01539 734455
 Milnthorpe 015395 62044