



THE FIRS

Bisley, Stroud



THE FIRS

Bisley, Stroud

The current owners have created a home that feels equally suited to busy family life, long summer lunches spilling into the garden, or slower weekends tucked away in one of the Cotswolds' most loved villages.



AI Image



A HOUSE THAT FEELS INSTANTLY LIKE HOME

Hidden quietly along a peaceful lane in the heart of Bisley, The Firs is one of those rare village houses that immediately feels both elegant and deeply welcoming. A handsome Victorian home surrounded by beautifully landscaped gardens and far-reaching valley views, it offers the perfect balance between period character and relaxed contemporary living.

Extended and thoughtfully improved over the years, the house now unfolds across three beautifully arranged floors, offering more than 2,500 sq.ft of versatile living space. There is a softness and calmness to the interiors - light pours through the house from every angle, while the elevated setting creates a constant connection to the surrounding countryside.



At the centre of the house sits a superb open-plan kitchen, dining and garden room - a space that completely transforms how the house lives day-to-day. Cleverly extended to maximise light and garden views, the room feels wonderfully open yet still connected and cosy.

A striking circular rooflight draws sunlight deep into the space, whilst full-width sliding doors open entirely onto the terrace, creating an effortless inside-outside flow during the warmer months. Whether hosting friends around the centrally-located island, family breakfasts before school, or large summer gatherings stretching into the garden, this is very much the heart of the home.

The kitchen itself is understated and timeless, with generous worktop space, plenty of storage and a sociable layout designed as much for entertaining as everyday practicality.

AI Image



DESIGNED AROUND MODERN LIVING

CHARACTER, WARMTH & CALM

Beyond the open-plan living space, The Firs retains all the charm you hope for from a Victorian house. The sitting room and snug both offer quieter, more intimate spaces with beautiful proportions, high ceilings and period detailing that add warmth and character throughout the ground floor.

The snug feels particularly cosy during winter months, whilst the spacious sitting room offers a more elegant atmosphere for evenings or entertaining. A large study and boot room provide further flexibility - ideal for home working, muddy dogs after countryside walks or the practicalities of family life.

Throughout the house, the balance between original character and modern comfort has been handled cleverly. Recently redecorated, the interiors feel fresh, calm and exceptionally well cared for.



AI Image

AND SO TO BED...

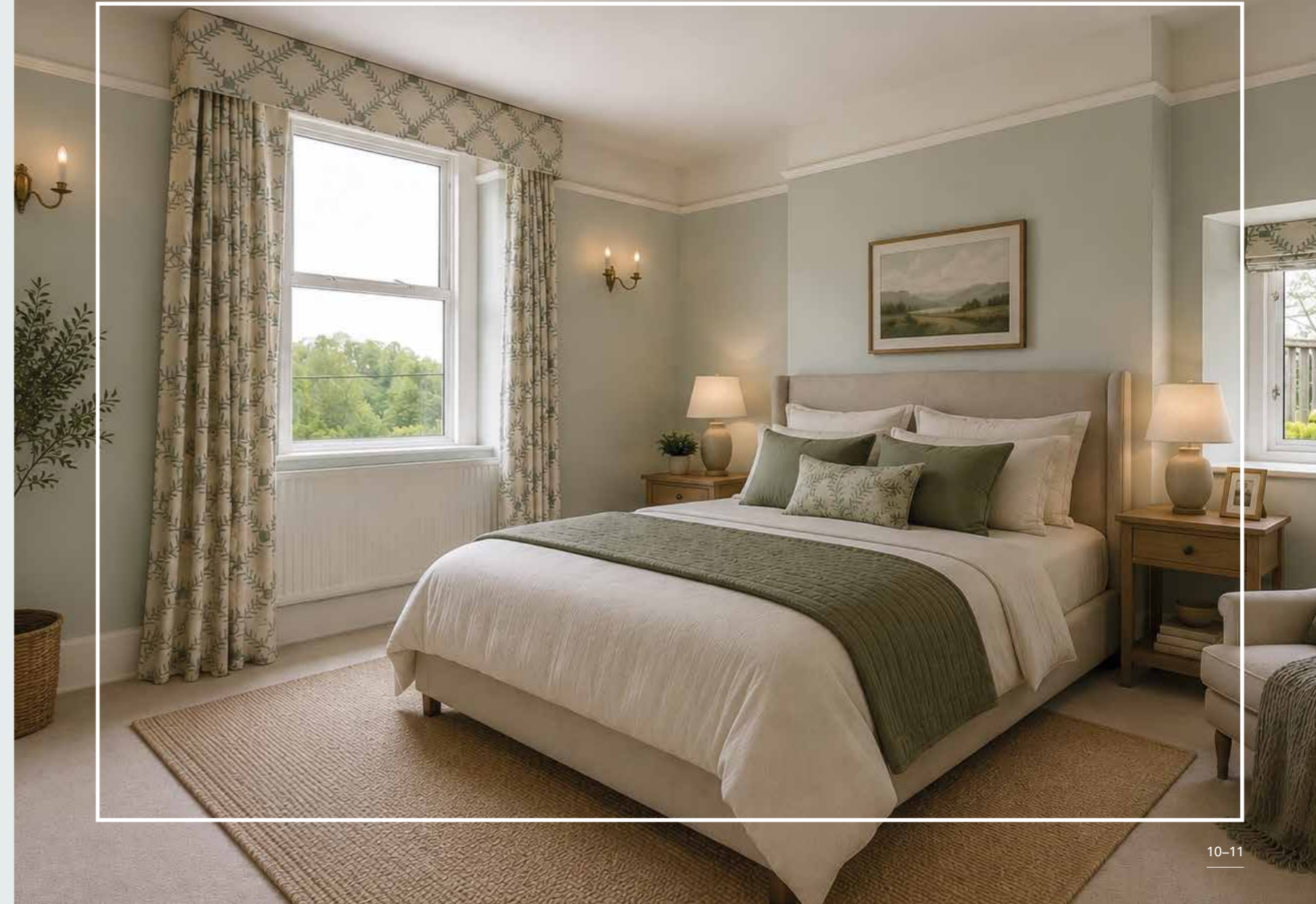
The bedroom accommodation is arranged perfectly for modern family living. The principal bedroom enjoys built-in wardrobes and an en-suite shower room, whilst three further first-floor bedrooms are served by a spacious family bathroom.

On the top floor, a spacious fifth bedroom occupies an entire level of the house and offers fantastic versatility. Whether used as a guest suite, teenage retreat, studio, or additional workspace, it feels wonderfully private and enjoys extensive loft storage tucked into the eaves.

The overall layout offers flexibility rarely found in village houses of this era - equally capable of adapting to growing families, visiting guests or quieter downsizing without compromise.



AI Image



AI Image





GARDENS MADE FOR ENTERTAINING

The gardens at The Firs are every bit as impressive as the house itself. Beautifully landscaped and wrapping gently around the house, they feel mature, private and established.

Terraced lawns, winding pathways and colourful planted borders create different areas to enjoy throughout the day, whilst the elevated position captures glorious far-reaching views across the valley and beyond. Near the front entrance, a charming spring-fed ornamental pond adds another layer of character and tranquillity.

The connection between the house and gardens is exceptional. During summer months, the sliding doors can remain wide open, allowing the terrace and kitchen space to work almost as one continuous entertaining area. It is easy to imagine long lunches, drinks at sunset or large family gatherings spilling effortlessly outdoors.

Planning permission has been granted for a beautifully designed Cotswold stone garage with annexe accommodation above - offering exciting potential for guest accommodation, a studio, home office or gym.





WHERE TO GO WHEN YOU NEED...



Your morning coffee: Start the day at the jolly nice Bisley Farm Shop, just a short walk or two-minute drive away, where excellent coffee, fresh pastries and local produce have made it a favourite with villagers. For something slower-paced, head into nearby Stroud or Cirencester where independent cafés spill onto pretty streets and market squares.



A proper pub: Bisley may be peaceful, but it is brilliantly served when it comes to pubs. The Bear Inn is everything you want from a Cotswold village pub - roaring fires, quiz nights, great food and a genuinely local atmosphere. The recently reopened Stirrup Cup adds another excellent option just moments away.



Your weekly shop: The village Green Shop is incredibly handy for everyday essentials, gifts and organic produce, whilst Bisley Farm Shop offers homegrown vegetables, meats and a café. For larger supermarkets, Waitrose in Stroud and Cirencester are both within easy reach, alongside Tesco, M&S Foodhall and Sainsbury's.



Long countryside walks: The walks from The Firs are exceptional. Step out directly onto winding footpaths leading into the beautiful Toadsmoor Valley, where beech woodland, wild garlic and bluebells create some of the most picturesque walks in the Cotswolds. There are endless circular routes from the village, many barely touching a road.



Dinner out: For relaxed countryside dining, The Woolpack at Slad, The Bell at Sapperton and Wilder in Nailsworth are all favourites nearby. Tetbury, Minchinhampton and Cirencester also offer an excellent selection of independent restaurants, wine bars and stylish cafés.



Schools: Bisley Primary School sits within walking distance and remains a huge draw for families locally. Thomas Keble is just five minutes away, whilst Beaudesert Park, Wycliffe, Cheltenham Ladies' College, Cheltenham College and Pate's Grammar are all easily accessible.



A round of golf: Minchinhampton Golf Club, with its three highly-regarded courses and spectacular common-land setting, is just a short drive away and widely considered one of the finest golfing spots in the Cotswolds.



A train to London: Stroud Station is around 4.5 miles away, whilst Kemble Station is approximately 10 miles from the house, both offering direct services to London Paddington, ideal for commuters, weekenders or those balancing countryside life with the city.



Something for the weekend: From award-winning farmers' markets in Stroud to antique shopping in Tetbury and long lunches in Minchinhampton, this corner of the Cotswolds offers an effortlessly lifestyle-led way of living. Giffords Circus, local open gardens, village fêtes and countryside pubs all add to the charm and strong sense of village community.

AI Image



THE FINER DETAILS

Freehold

Detached Victorian village house

Approx. 2,538 sq.ft of accommodation

Landscaped terraced gardens with valley views

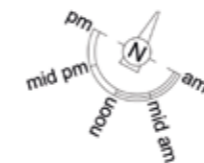
Mains electricity, water and drainage

Gas central heating with combi boiler (2024)

Council Tax Band: G

EPC: D

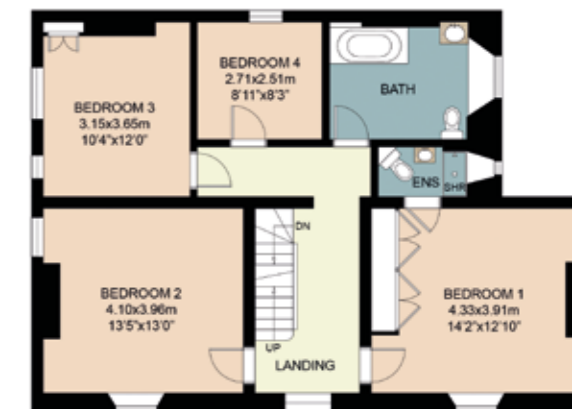
Total Area: 2538 sq.ft / 240 sq.m



Second Floor



Ground Floor



First Floor

Important notice: Stowhill Estates Ltd, their clients and any joint agents give notice that:

1) They are not authorised to make or give any representations or warranties in relation to the property either here or elsewhere, either on their own behalf or on behalf of their client or otherwise. They assume no responsibility for any statement that may be made in these particulars. These particulars do not form part of any offer or contract and must not be relied upon as statements or representations of fact.

2) Any areas, measurements or distances are approximate. The text, photographs and plans are for guidance only and are not necessarily comprehensive.

It should not be assumed that the property has all necessary planning, building regulation or other consents and Stowhill Estates Ltd have not tested any services, equipment or facilities Purchasers must satisfy themselves by inspection or otherwise. Photos and Brochure prepared May 2026.

This floor plan including furniture, fixture measurements and dimensions are approximate and for illustrative purposes only. Boxbrownie.com gives no guarantee, warranty or representation as to the accuracy and layout. All enquiries must be directed to the agent, vendor or party representing this floor plan.

AI Images - The following images have been digitally styled using AI to help showcase how the spaces at The Firs could be furnished and enjoyed. Designed to inspire, they offer a glimpse into the home's versatility and lifestyle potential, from relaxed family living to elegant entertaining, while allowing buyers to imagine the spaces tailored to their own style.



Scan me to book a viewing
or call the Stowhill Estates Team on:
01242 384444 | contact@stowhillestates.com



STOWHILL ESTATES

What Three Words: [///montage.wonderful.skip](https://www.threewords.co.uk/montage.wonderful.skip)